



# ARIA RGBW

RGBW LINEAR AC FLOODLIGHT PRJ-ARIA RGBW





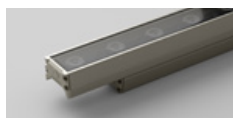
Aria RGBW is a high power linear mains powered floodlight luminaire, specifically designed for creative wall washing and colour grazing applications. Powerful, robust and available in multiple length options which allow for greater design flexibility. The RGBW colour luminaire features an integral power supply and DMX driver.

#### POWER (AC)

#### LUMINOUS FLUX

##### 35W

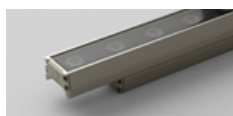
35W / 600mm unit



133 – 1,425 lm

##### 70W

65W / 1,200mm unit



267 – 2,850 lm

#### RGBW FULL COLOUR





## SELF-ADDRESSING

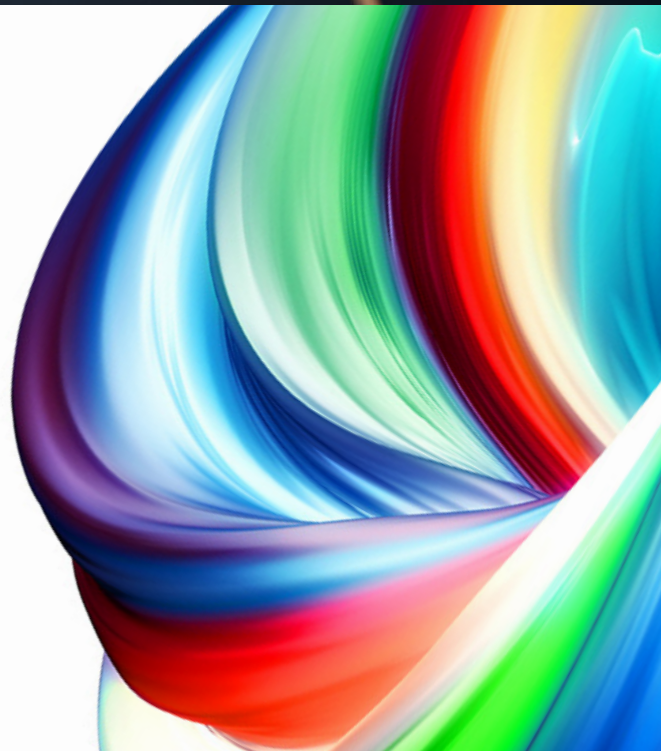
Manual on-site addressing during installation is no longer required with Coolon's clever technology. The self-addressing luminaires automatically enumerate DMX channels in a consecutive manner when connected.

This technology seamlessly recognises sequentially positioned luminaires in Aria installations and requires no unique identifiers.

## MATRIX WHITE

The Matrix White algorithm physically drives RGBW LEDs from an RGB control signal. It does this by calculating when to replace a combination of primary colours (red, green and blue) with a pure white light source. This feature presents users with the following advantages:

- Cost savings, as more luminaires can be controlled by each DMX universe (170 RGBW luminaires, versus 128 without Matrix White)
- Utilise dedicated white output instead of relying on additive RGB (dirty) white
- Reduced power consumption, as the LED chip is being utilised effectively
- Superior colour rendering and appearance

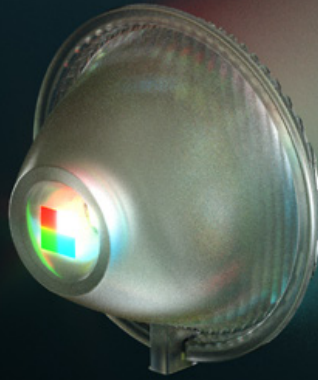


## POLYURETHANE ENCAPSULATION

Aria RGBW utilises Coolon's encapsulation technology to deliver a truly extraordinary outdoor luminaire. IP66 and IK08, shock and abrasion resistance, thermal protection and reliability are all ensured.

## FINE-TUNED COLLIMATION

Our RGBW Quad chip delivers outstanding lumen output within a single chip, which is effectively collimated with precise and superior optics. This ensures an intensely saturated and uniform effect across the length of the luminaire, delivering an impressive colour gamut without chromatic aberrations or artefacts.



## STREAMLINED TOPOLOGY

Aria RGBW is truly plug and play - your luminaires arrive to site ready to perform, simplifying lighting design, electrical layout and installation.

Aria's design allows a system to be connected via integral all-in-one cables without further accessories and junction boxes.

Unpack. Connect. Enjoy.  
Installation has never been simpler.

5  
YEARS

### 5 YEARS WARRANTY

Coolon luminaires are covered by a solid comprehensive manufacturer's warranty that covers a range of possible defects and performance parameters throughout the duration of the warranty period.



### PROUDLY MADE IN AUSTRALIA

Our products are designed and manufactured in Australia. Engineered to perfection, using only the highest quality components and highly skilled labour, each luminaire is assembled and thoroughly tested to ensure that it exceeds the highest standards.

## TECHNICAL SPECIFICATIONS

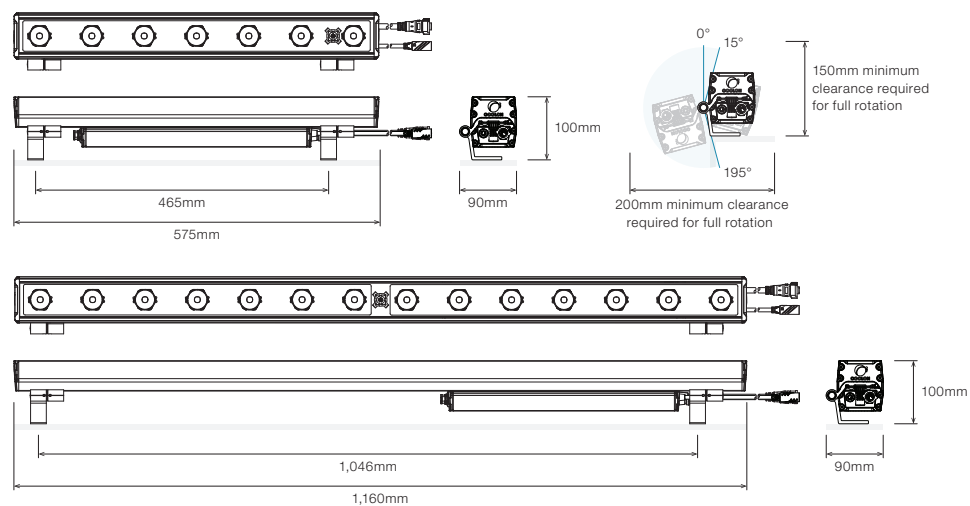
Product Code	PRJ-ARIA RGBW-06	PRJ-ARIA RGBW-12
Length	600mm	1,200mm
Nominal Power	35W	70W
Description	Aria RGBW Linear Floodlight	
Body	Aluminium Alloy Body	
Finish	Brushed Natural Anodised, Brushed Black Anodised	
Cover	Polyurethane	
Endcaps	Powdercoated Die-cast Aluminium	
Weight	4.2kg	6.2kg
LEDs per Luminaire	7 pieces of 4 in 1 RGBW LEDs	
Input Voltage	120 – 250VAC	
Input Frequency Range	47 – 63Hz	
Power Factor (PF)	>0.9	
Inrush Current	Meets NEMA-410 requirements	
Leakage Current	400 µA @ 120VAC 800 µA @ 230VAC	
Max. Input Power	37W	70W
Max. Continuous Connection Length	Up to 26 Units @ 230VAC Up to 26 Units @ 120VAC	Up to 26 units @ 230VAC Up to 13 Units @ 120VAC
Dimming / Control	Self Addressable DMX (Full Frames), 3 Channels	
External Heatsink Required	No	
Ambient Operating Temperature	Ta -40°C to 50°C	
Reported Lumen Maintenance TM21-11 (@ Ts = 90°C, If = 1500mA)	PBED-20FTE-SRGBV L90 (6K) = 13,000 hours L70 (6K) > 33,000 hours Aria RGBW max. operating values (@ Ts = 85°C, If = 900mA)	
IP Rating	IP66 (Standard)	
IK Rating	IK08 (Standard) - Not including Wiring / Connectors	

## POWER & LUMEN OUTPUT

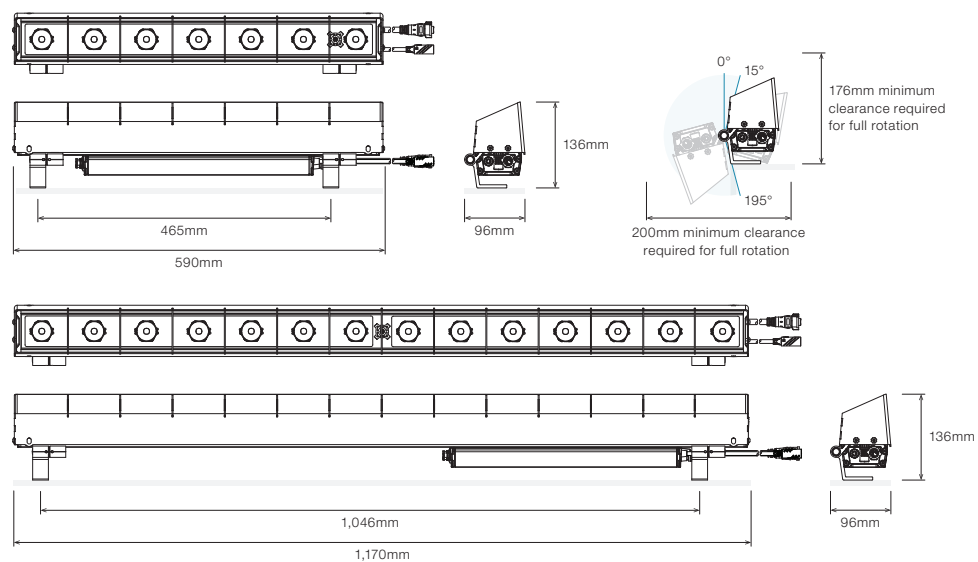
		POWER	15D	30D	56D	O3511D	O6010D	RO3511D	RO6010D
ARIA RGBW 06	Red	16W	471 lm	409 lm	433 lm	470 lm	385 lm	470 lm	385 lm
	Green	20W	1,007 lm	936 lm	951 lm	986 lm	803 lm	986 lm	803 lm
	Blue	20W	158 lm	133 lm	148 lm	154 lm	133 lm	154 lm	133 lm
	White	20W	1,033 lm	870 lm	976 lm	1,012 lm	824 lm	1,012 lm	824 lm
	Yellow	32W	1,425 lm	1,181 lm	1,350 lm	1,406 lm	1,173 lm	1,406 lm	1,173 lm
	Magenta	32W	597 lm	506 lm	567 lm	595 lm	495 lm	595 lm	495 lm
	Cyan	35W	1,159 lm	936 lm	1,097 lm	1,134 lm	958 lm	1,134 lm	958 lm
ARIA RGBW 12	Red	29W	941 lm	817 lm	866 lm	941 lm	771 lm	941 lm	771 lm
	Green	34W	2,014 lm	1,871 lm	1,903 lm	1,972 lm	1,607 lm	1,972 lm	1,607 lm
	Blue	34W	315 lm	266 lm	296 lm	307 lm	267 lm	307 lm	267 lm
	White	34W	2,067 lm	1,739 lm	1,952 lm	2,024 lm	1,649 lm	2,024 lm	1,649 lm
	Yellow	60W	2,850 lm	2,362 lm	2,701 lm	2,812 lm	2,346 lm	2,812 lm	2,346 lm
	Magenta	60W	1,194 lm	1,011 lm	1,133 lm	1,190 lm	990 lm	1,190 lm	990 lm
	Cyan	65W	2,318 lm	1,871 lm	2,195 lm	2,268 lm	1,916 lm	2,268 lm	1,916 lm

## DIMENSIONS

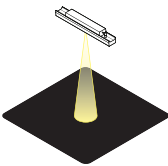
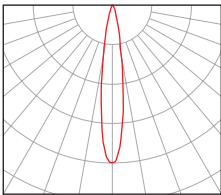
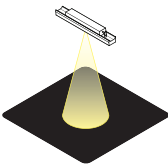
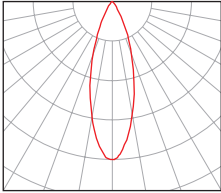
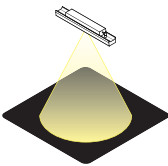
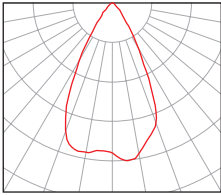
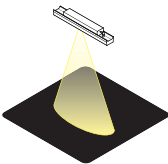
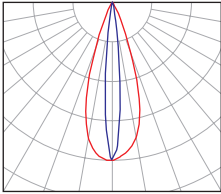
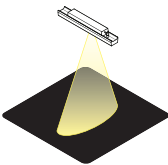
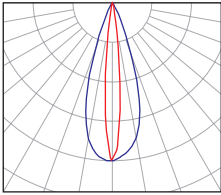
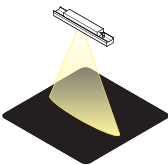
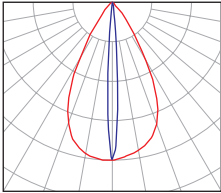
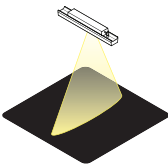
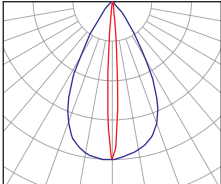
### WITH ROTATING BRACKET



### WITH ROTATING BRACKET AND GLARE SHIELD



## ■ POLAR DISTRIBUTION

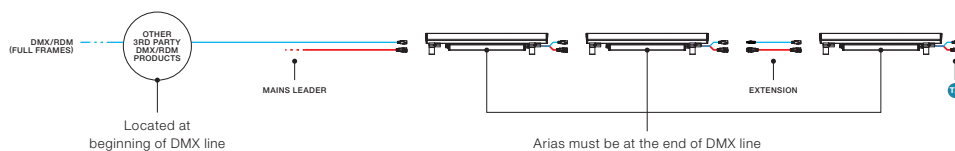
OPTIC		POLAR DISTRIBUTION
15D Narrow Beam 15° Beam Angle		
30D Medium Beam 30° Beam Angle		
56D Wide Beam 56° Beam Angle		
O3511D Oval Beam Oval 35° x 11° Beam Angle		
RO3511D Oval Rotated Beam Oval 11° x 35° Beam Angle		
O6010D Oval Beam Oval 60° x 10° Beam Angle		
RO6010D Oval Rotated Beam Oval 10° x 60° Beam Angle		

## ■ WIRING DIAGRAMS

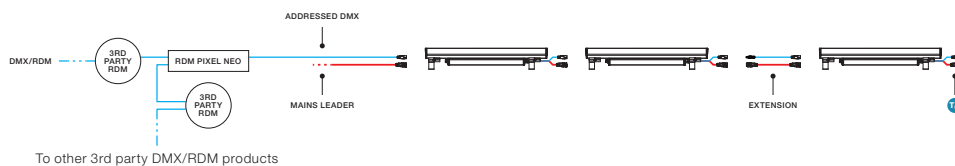
### ARIA STANDALONE INSTALLATION



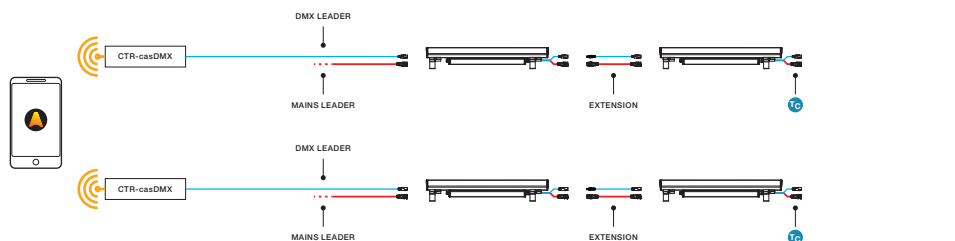
### ARIA IN MIXED INSTALLATIONS Option 1 Self Addressing



### ARIA IN MIXED INSTALLATIONS Option 2 RDM



### ARIA WITH CASAMBI CONTROL



<sup>1</sup> Up to 2 Aria luminaires per casDMX

<sup>2</sup> Please refer to casDMX documentation for reference



## ■ CONNECTOR PIN-OUTS



Power Output  
(Female)



Power Input  
(Male)



Data Output  
(Female)



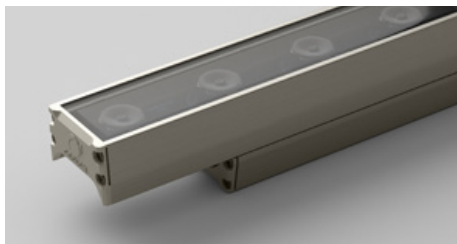
Data Input  
(Male)

- ① Active
- ② Neutral
- ③ Earth

- ① DMX +
- ② DMX -
- ③ Common

---

## ■ PROFILE COLOUR

**BNA** • Brushed Natural Anodised**BLK** • Brushed Black Anodised

---

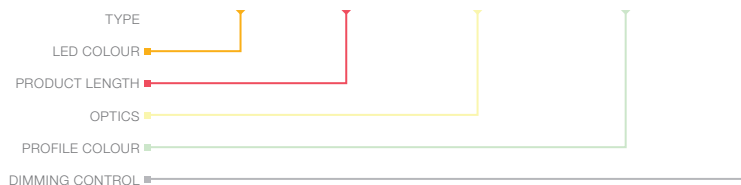
## ■ IP RATING

**IP66**

Fully protected against dust.  
Protected against wave-like  
water jets from all directions.

## ORDERING EXAMPLE

### PRJ - ARIA RGBW - WW - 12 - O3511D - BNA - DMX



#### LED COLOUR

WW	RGB + Warm White
CW <sup>1</sup>	RGB + Cool White

#### PRODUCT LENGTH

06	575mm
12	1,160mm

#### OPTICS

15D	15° Beam
30D	30° Beam
56D	56° Beam
O3511D	Oval 35° x 11° Beam
RO3511D	Oval 11° x 35° Beam
O6010D	Oval 60° x 10° Beam
RO6010D	Oval 10° x 60° Beam

#### PROFILE COLOUR

BNA	Brushed Natural Anodised
BLK	Brushed Black Anodised

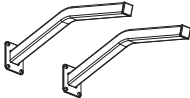
#### DIMMING CONTROL

DMX	Self-Addressable DMX
DMX_CB <sup>2</sup>	Self-Addressable DMX with CB compliant cables
casDMX	Casambi control through CRT-casDMX

<sup>1</sup> Cool White available on demand

<sup>2</sup> CB Certification

## ■ ACCESSORIES

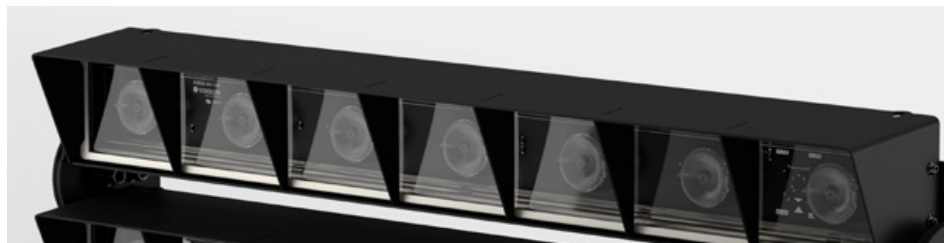
	PRODUCT CODE	DESCRIPTION
	<b>MOUNTING BRACKET <sup>1</sup></b>	
	MBR-PRJ-ARM-500-WHT	Projector Outreach arm 500mm (1 unit), White
	MBR-PRJ-ARM-850-WHT	Projector Outreach arm 850mm (1 unit), White
	MBR-PRJ-ARM-1000-WHT	Projector Outreach arm 1000mm (1 unit), White
	MBR-PRJ-ARM-500-BLK	Projector Outreach arm 500mm (1 unit), Black
	MBR-PRJ-ARM-850-BLK	Projector Outreach arm 850mm (1 unit), Black
	MBR-PRJ-ARM-1000-BLK	Projector Outreach arm 1000mm (1 unit), Black
	MBR-PRJ-ARM-500-CHR	Projector Outreach arm 500mm (1 unit), Chrome
	MBR-PRJ-ARM-850-CHR	Projector Outreach arm 850mm (1 unit), Chrome
	MBR-PRJ-ARM-1000-CHR	Projector Outreach arm 1000mm (1 unit), Chrome

<sup>1</sup> Two Outreach Arms required per luminaire.

### ACCESSORIES

ACC-ARIA-SPK-06	Aria Bird Spikes 600mm length (Black)
ACC-ARIA-SPK-12	Aria Bird Spikes 1,200mm length (Black)
ACC-ARIA-GSH-06	Aria Glare Shield 600mm length (Black)
ACC-ARIA-GSH-12	Aria Glare Shield 1,200mm length (Black)

### ACC-ARIA-GSH-06 · Glare Shield 600mm length



### CABLE EXTENSIONS



CBL-PRJ-CBLKIT-MADA-JK-IP68-0.6M	Aria Cable Kit Mains & Data – Joiner – IP68 – 0.6 Metre Kit Designed to Connect 1.2 Metre Units End-to-end
CBL-PRJ-CBLKIT-MADA-JK-IP68-2.5M	Aria Cable Kit Mains & Data – Joiner – IP68 – 2.5 Metre
CBL-PRJ-CBLKIT-MADA-JK-IP68-5M	Aria Cable Kit Mains & Data – Joiner – IP68 – 5 Metre
CBL-PRJ-CBLKIT-MADA-LK-IP68-0.2M	Aria Cable Kit Mains & Data Leader – IP68 – 250mm Data Leader Connector with Stripped Wires + 485mm Mains Leader Connector with Stripped Wires
CBL-PRJ-CBLKIT-MADA-TK-IP68	Mains & Data Termination Kit for Aria products (2 caps)

### CONTROLLERS



CTR-RDM PIXEL NEO-RJ45F-OC3_DMx-IP65	DMX/RDM To Self Addressable Pixel DMX Coolon Products Converter
CTR-casDMX	casDMX Casambi To 8CH DMX Converter

## ■ PHOTOGRAPHY

	LOCATION	LIGHTING PARTNER	PHOTOGRAPHER
Cover Photo	Wally's Walk Macquarie University	Jadecross	Jackie Chan <a href="https://www.jackiechan.com.au/">https://www.jackiechan.com.au/</a>