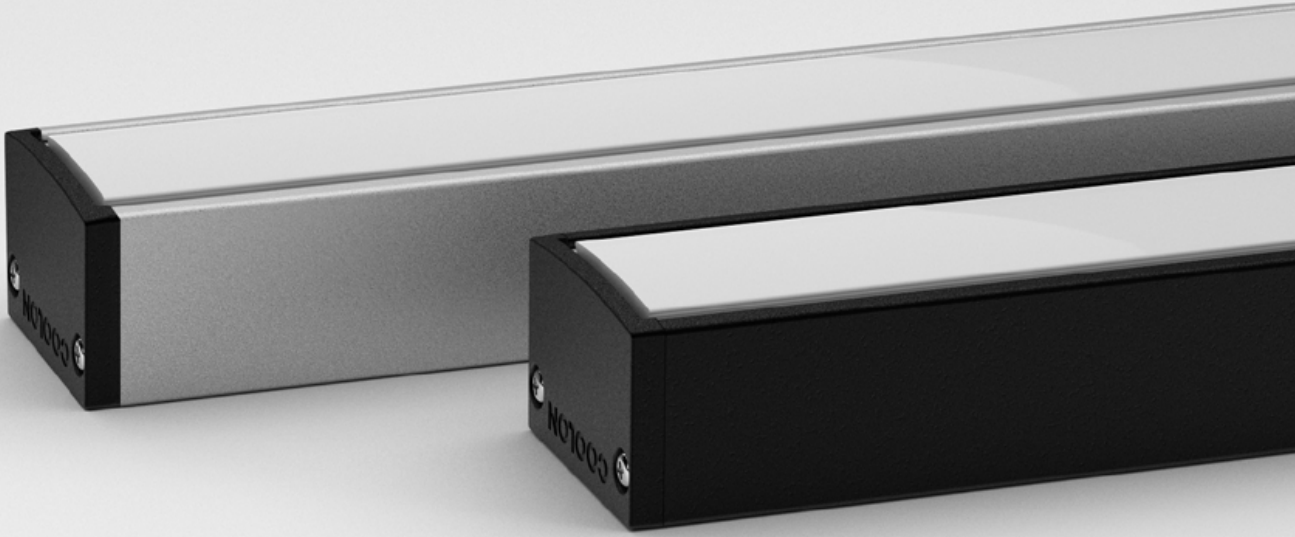


# ELECTRO

LINEAR MEDIUM POWER LNR-ELECTRO





Electro is a compact and understated linear architectural marker luminaire with homogeneous light output.

Electro is ideal for visible or direct lighting applications where the appearance of the luminaire is important to the architectural aesthetic.

**POWER**

**LUMINOUS FLUX**

**22W**  
22W / metre



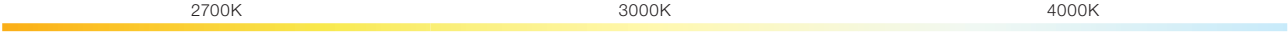
**SD** • 1,600 lm / metre

**40W**  
40W / metre



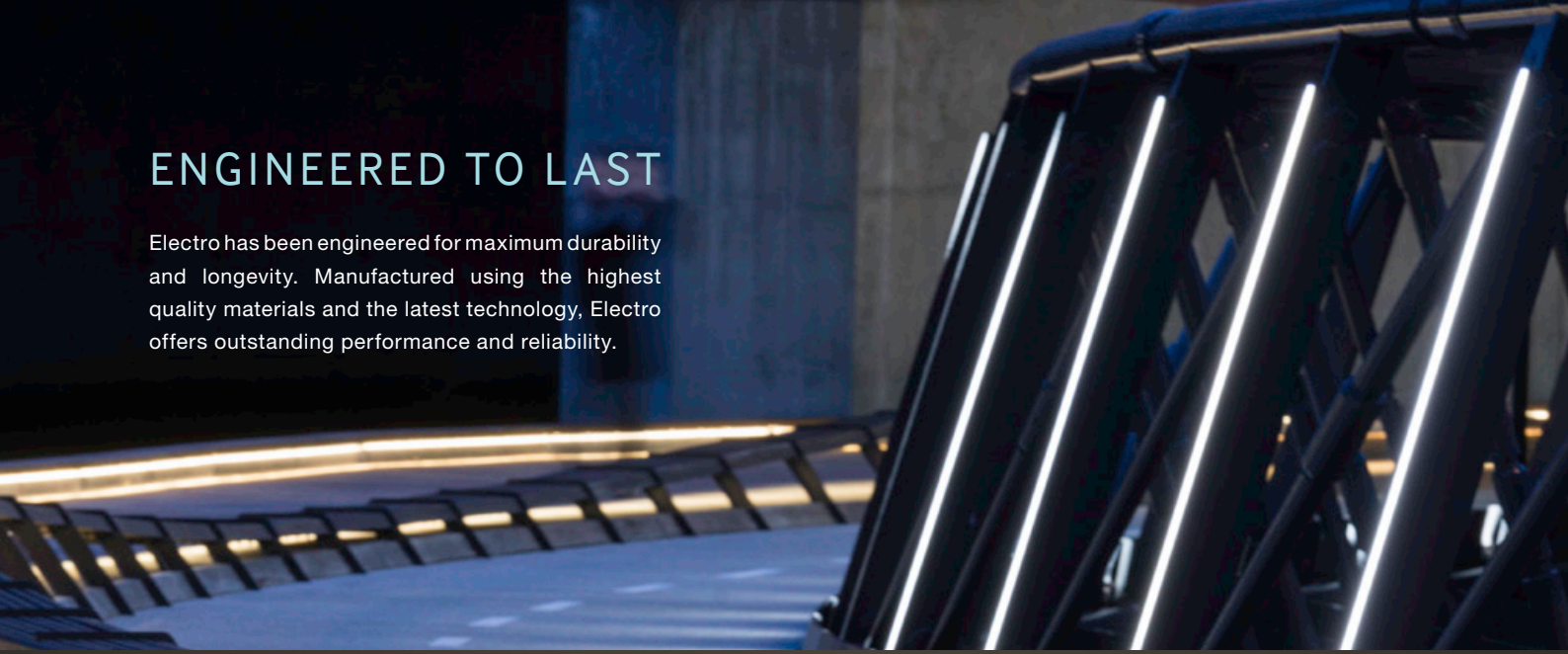
**SD** • 2,000 lm / metre

**COLOUR TEMPERATURE**



# ENGINEERED TO LAST

Electro has been engineered for maximum durability and longevity. Manufactured using the highest quality materials and the latest technology, Electro offers outstanding performance and reliability.



## UNIFORM GLOW

Electro is offered in various configurations, and uniform glow, a completely uniform diffuser with no visible scalloping on the diffuser or the illuminated surface.



### LONG OPERATING LIFE

Coolon products use the world's most reputable LED manufacturers and the latest available standards to adequately report lumen maintenance. We strive to drive LEDs under their nominal current and use state-of-the-art heat dissipation methods, leading to durable electronics.



### VARIOUS CCT & COLOUR BINNING CONSISTENCY

All products are offered in various colour temperatures, and manufactured using tighter bins, ensuring excellent consistency and uniformity.



### 5 YEARS WARRANTY

Coolon luminaires are covered by a solid comprehensive manufacturer's warranty that covers a range of possible defects and performance parameters throughout the duration of the warranty period.



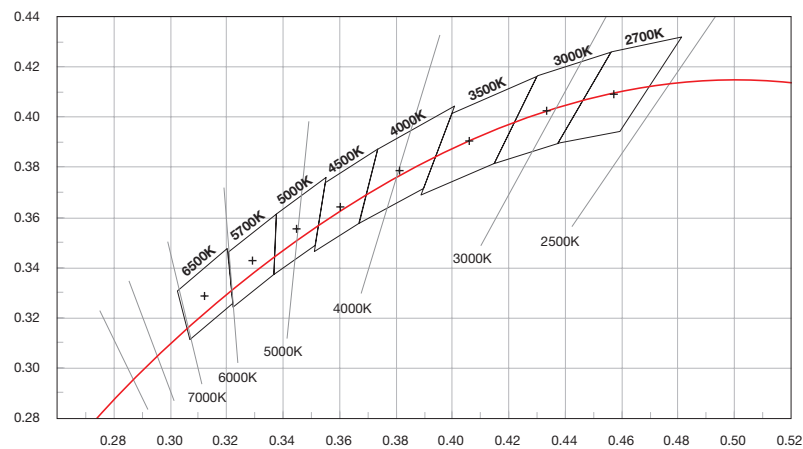
### PROUDLY MADE IN AUSTRALIA

Our products are designed and manufactured in Australia. Engineered to perfection, using only the highest quality components and highly skilled labour, each luminaire is assembled and thoroughly tested to ensure that it exceeds the highest standards.

## TECHNICAL SPECIFICATIONS

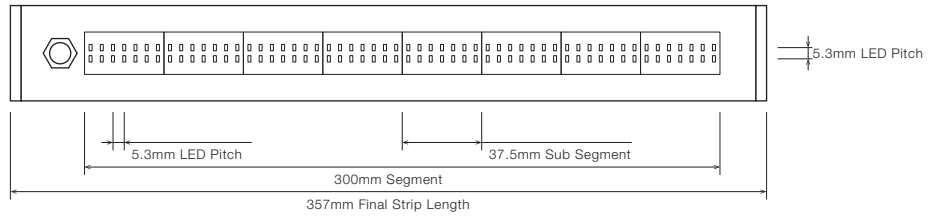
	22W VERSION	40W VERSION
Product Code	LNR-ELECTRO	
Description	Electro Linear Medium Power	
Body	Aluminium Alloy Body	
Finish	Powder Coated Black (Standard), Various Colours Available	
Cover	Polycarbonate Diffused for Indoor Applications	
End Caps	Polycarbonate (PC)	
Segment Length (S)	300mm	
Sub-Segment Length (A)	37.5mm	
Number of Sub-Segments	8	
Segment Width	26.5mm	
LED Pitch	5.3mm (W) x 5.3mm (H)	
LEDs Per Segment	112	
LEDs Per Sub Segment	14	
Operating Voltage	42VDC	
Typical Power Consumption per Segment	6.72W per 300mm Segment	12.00W per 300mm Segment
Typical Power Consumption per Metre	22W per Metre	40W per Metre
Typical Current	100mA per 300mm Segment	280mA per 300mm Segment
Colour Rendering Index (CRI)	80+	
Dimmable	Through DRV-DALIPOINT-1X5A, DRV-DALIPOINT-1X10A-IP or DRV-DIMMERPOINT-1X10A (sold separately)	
Luminous Flux per Metre (lm/M)	1,600lm / Metre	2,000lm / Metre
External Heatsink Required	No	
Ambient Operating Temp	Ta -10°C to 40°C	
Thermal Operating	Yes (Active)	
Reported Lumen Maintenance TM21-11 (@ Ts = 55°C, If = 65mA)	L70 (12K) > 72,000 hours L90 (12K) > 59,000 hours  Electro max. operating values (@ Ts = 40°C, If = 35mA)	
IP Rating	IP40 (Standard)	
Max Continuous Connection Length	Please refer to installation limitations	

## COLOUR BINNING

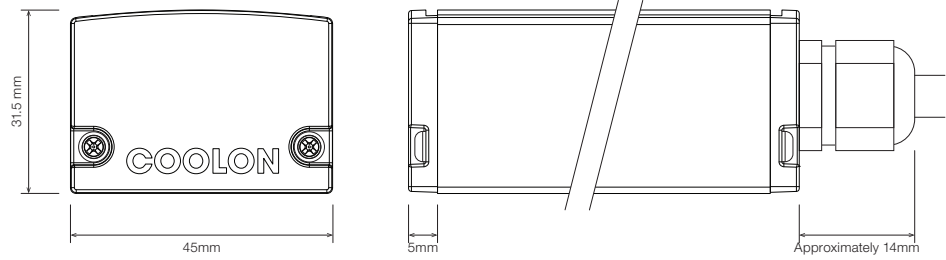


■ DIMENSIONS

For final strip lengths please refer to the "Product Length" table.

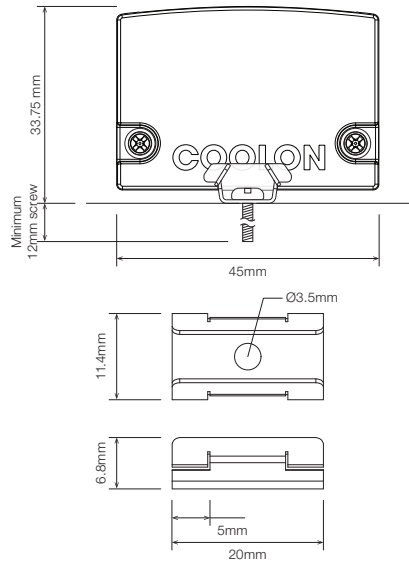


**STANDARD PROFILE**



**STAINLESS STEEL C-CLIP**

Clips are required for every 300mm length of luminaire.



■ PRODUCT LENGTH

FULL SEGMENTS	SUB SEGMENTS	FINAL LENGTH	FULL SEGMENTS	SUB SEGMENTS	FINAL LENGTH
S0	A1	94.5mm	S6	A1	1894.5mm
S0	A2	132mm	S6	A2	1932mm
S0	A3	169.5mm	S6	A3	1969.5mm
S0	A4	207mm	S6	A4	2007mm
S0	A5	244.5mm	S6	A5	2044.5mm
S0	A6	282mm	S6	A6	2082mm
S0	A7	319.5mm	S6	A7	2119.5mm
S1	A0	357mm	S7	A0	2157mm
S1	A1	394.5mm	S7	A1	2194.5mm
S1	A2	432mm	S7	A2	2232mm
S1	A3	469.5mm	S7	A3	2269.5mm
S1	A4	507mm	S7	A4	2307mm
S1	A5	544.5mm	S7	A5	2344.5mm
S1	A6	582mm	S7	A6	2382mm
S1	A7	619.5mm	S7	A7	2419.5mm
S2	A0	657mm	S8	A0	2457mm
S2	A1	694.5mm	S8	A1	2494.5mm
S2	A2	732mm	S8	A2	2532mm
S2	A3	769.5mm	S8	A3	2569.5mm
S2	A4	807mm	S8	A4	2607mm
S2	A5	844.5mm	S8	A5	2644.5mm
S2	A6	882mm	S8	A6	2682mm
S2	A7	919.5mm	S8	A7	2719.5mm
S3	A0	957mm	S9	A0	2757mm
S3	A1	994.5mm	S9	A1	2794.5mm
S3	A2	1032mm	S9	A2	2832mm
S3	A3	1069.5mm	S9	A3	2869.5mm
S3	A4	1107mm	S9	A4	2907mm
S3	A5	1144.5mm	S9	A5	2944.5mm
S3	A6	1182mm	S9	A6	2982mm
S3	A7	1219.5mm			
S4	A0	1257mm			
S4	A1	1294.5mm			
S4	A2	1332mm			
S4	A3	1369.5mm			
S4	A4	1407mm			
S4	A5	1444.5mm			
S4	A6	1482mm			
S4	A7	1519.5mm			
S5	A0	1557mm			
S5	A1	1594.5mm			
S5	A2	1632mm			
S5	A3	1669.5mm			
S5	A4	1707mm			
S5	A5	1744.5mm			
S5	A6	1782mm			
S5	A7	1819.5mm			
S6	A0	1857mm			

▪ DIFFUSER

**SD** · Standard Diffused



▪ PROFILE COLOUR

**BLK** · Black (Standard)



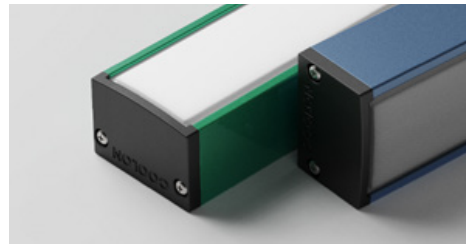
**WHT** · White



**GRY** · Grey



**CST** · Custom Colour <sup>1</sup>



<sup>1</sup> Custom colours available on request

WIRING CONFIGURATION

CONNECTOR TYPE	DRAWING	MALE	FEMALE
WR2OS Wire 2 Core One Side			
OC2.1MO Outdoor Connector 2.1pin Male Only			
SMPLC Sample Type Connector 2.5mm			

- Typical wiring length 1,000mm.
- Please consult Coolon for details on extension cable between LED fittings, drivers and power supplies.

WIRING COLOUR CODE	
Red	+ VDC
Black	GND

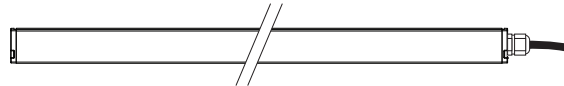
WIRING POSITION

WB - Wire from back



Ideal for fittings installed back-to-back or limited spaces.

WS - Wire from Side



Ideal for fittings installed individually or vertically.

IP RATING

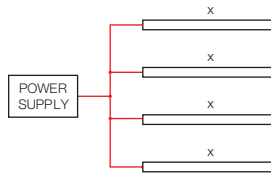
**IP40**

Protected against solid objects greater than 1mm. No protection against liquids.



■ INSTALLATION LIMITS

SCENARIO 1



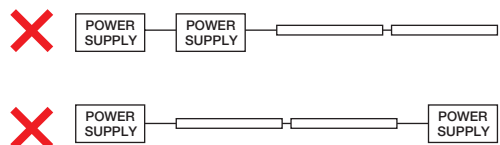
**MAX. CONTINUOUS CONNECTION LENGTH (X) CONNECTOR TYPE**

2,982 mm With standard 2 bare wires (WR20S)

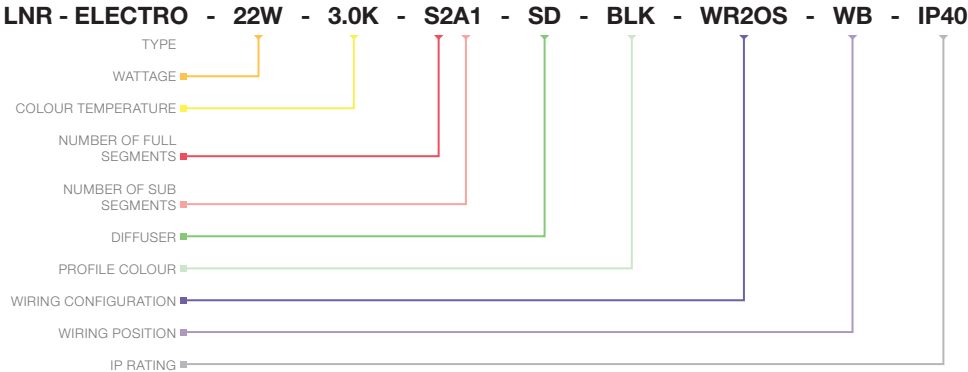
- Please consult Coolon for details on extension cable between LED fittings, drivers and power supplies.

**⚠ WARNING**

Avoid connecting multiple power supplies into a single circuit, unless they are specifically designed to do so.



ORDERING EXAMPLE



**WATTAGE**

22W	22W per metre
40W	40W per metre

**COLOUR TEMPERATURE**

2.7K	2700K CRI 80
2.7KCRI	2700K CRI 90
3.0K	3000K CRI 80
3.0KCRI	3000K CRI 90
4.0K	4000K CRI 80
4.0KCRI	4000K CRI 90

**PRODUCT LENGTH**

FULL SEGMENTS	SUB SEGMENTS
S1	A0
S2	A1
S3	A2
S4	A3
S5	A4
S6	A5
S7	A6
S8	A7
S9	

**DIFFUSER**

SD	Standard Diffused
----	-------------------

**PROFILE COLOUR**

BLK	Black (Standard)
WHT	White
GRY	Grey
CST	Custom Colour <sup>1</sup>

**WIRING CONFIGURATION**

WR2OS	Wire 2 Core One Side
OC2.1MO	Outdoor Connector 2.1pin Male Only
SMPLC	Sample Type Connector 2.5mm

**WIRING POSITION**

WB	Wire from Back
WS	Wire from Side

**IP RATING**

IP40	Indoor Use
------	------------

<sup>1</sup> Custom colours available on request

▪ ACCESSORIES

	PRODUCT CODE	DESCRIPTION
--	--------------	-------------

**MOUNTING CLIP \***



MC-C-CLIP

Stainless Steel C-Clip

\* Recommended spacing between Mounting Clips is maximum 300mm.

**DRIVER**



DRV-DALIPOINT-1X5A

DALI 5 Amps 1 Channel LED Driver

DRV-DALIPOINT-1X10A-IP

DALI 10 Amps 1 Channel Outdoor LED Driver

DRV-DIMMERPOINT-1X10A

Rotary Wall-Mount LED Driver

**POWER SUPPLY FOR OUTDOOR USE (IP67)**



PWR-HLG-60H-42AU

Mean Well Power Supply HLG 60W 42V IP67

PWR-HLG-150H-42AU

Mean Well Power Supply HLG 150W 42V IP67

PWR-HLG-240H-42AU

Mean Well Power Supply HLG 240W 42V IP67