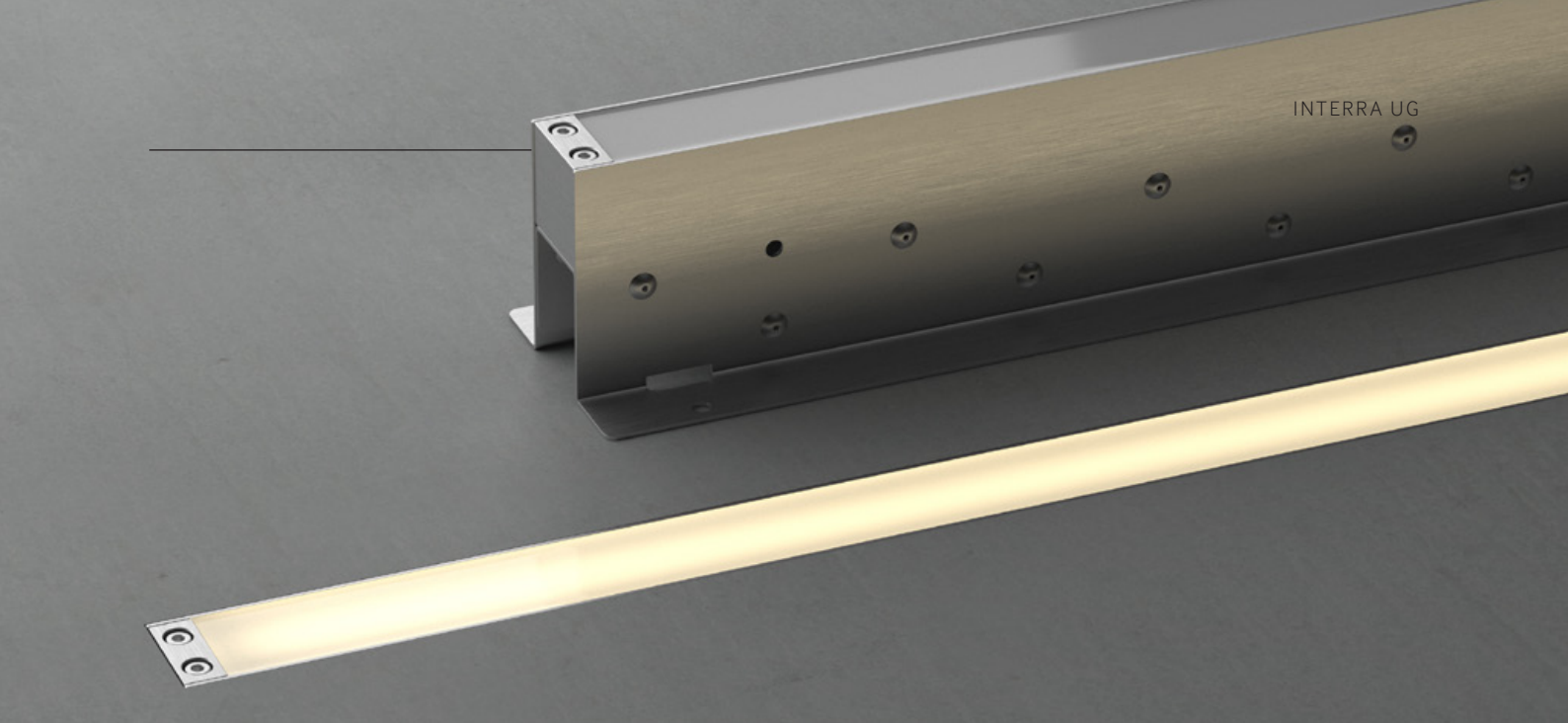




INTERRA UG

IN-GROUND LINEAR LED LNR-INTERRA UG





Interra UG is an IP67 in-ground luminaire available in various lengths and colour temperatures. Interra UG is designed to allow multiple units to be placed end-to-end and produce continuous illumination void of obvious breaks.

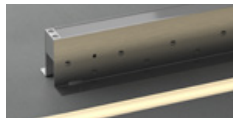
Made from marine-grade stainless-steel base and an interlocking seamless, diffused acrylic luminaire, Interra UG provides a uniform illuminated surface.

POWER

LUMINOUS FLUX

16W

16W / metre



SD - 500 lm / metre

COLOUR TEMPERATURE



MULTIPLE CONFIGURATIONS

Interra UG is offered in three different lengths and various CCTs, providing a highly configurable, cutting edge linear in-ground fitting.



ENGINEERED TO LAST

Interra UG has been engineered for harsh trafficable environments, out of the highest quality materials. Featuring solid acrylic and a stainless-steel base, Interra is designed to meet local and overseas standards.

L90

LONG OPERATING LIFE

Coolon products use the world's most reputable LED manufacturers and the latest available standards to adequately report lumen maintenance. We strive to drive LEDs under their nominal current and use state-of-the-art heat dissipation methods, leading to durable electronics



VARIOUS CCT & COLOUR BINNING CONSISTENCY

All products are offered in various colour temperatures, and manufactured using tighter bins, ensuring excellent consistency and uniformity.

5
YEARS

5 YEARS WARRANTY

Coolon luminaires are covered by a solid comprehensive manufacturer's warranty that covers a range of possible defects and performance parameters throughout the duration of the warranty period.



PROUDLY MADE IN AUSTRALIA

Our products are designed and manufactured in Australia. Engineered to perfection, using only the highest quality components and highly skilled labour, each luminaire is assembled and thoroughly tested to ensure that it exceeds the highest standards.

■ TECHNICAL SPECIFICATIONS

	INTERRA-UG-S1	INTERRA-UG-S2	INTERRA-UG-S3
Product Code	LNR-INTERRA-UG-S1	LNR-INTERRA-UG-S2	LNR-INTERRA-UG-S3
Length	311mm	611mm	911mm
Operating Voltage	42VDC		
Colour Temperature	2700K, 3000K, 4000K, 5000K		
Typical Power Consumption	5W	10W	15W
Typical Current	120mA	240mA	360mA
Dimmable	Through DRV-DALIPOINT CV NEO, DRV-DIMMERPOINT-1X10A (indoor)		
Ambient Operating Temperature	Ta -10°C to +40°C		
Reported Lumen Maintenance TM21-11 (@ Ts = 55°C, If = 65mA)	L70 (12K) > 72,000 hours L90 (12K) = 59,000 hours Interra max. operating values (@ Ts = 40°C, If = 15mA)		
IP Rating	IP67		
IK Rating	IK10 (Luminaire must be installed according to instructions in order to guarantee rating)		
Material Composition (Body)	Stainless Steel 316		
Material Composition (LED Luminaire)	PMMA		
Material Composition (End Block)	Stainless Steel 316		

■ CARE INSTRUCTIONS

✓ **ONLY USE** the following cleaning agents to wash the face of the Interra luminaire:

- Alcohol (under 30%)
- Soap solution
- Soda solution
- Ammonia, aqueous solution
- Hydrogen peroxide (under 20%)

✗ **DO NOT** use any of the following cleaning agents on the Interra Luminaire:

- Alcohol (absolute)
- Carbon tetrachloride
- Methylated spirits
- Paraffin
- Perchloroethylene
- Petrol mixture (containing benzene)
- Solvent stain removers
- Trichloroethylene
- Turpentine
- Turpentine substitute

✗ **DO NOT** use the following chemicals near the Interra Luminaire:

- Carbon acid (disinfectant)
- Hydrogen peroxide (over 20% - disinfectant)
- Surgical spirit (disinfectant)
- Tincture of iodine (5% - disinfectant)
- Nitrocellulose (paint)
- Thinners, (general - paint)
- Bituminous emulsion (building materials and protective agents for buildings)
- Hot bitumen (building materials and protective agents for buildings)
- Aqueous solutions of pesticides
- Nail polish
- Nail polish remover
- Calcium chloride cleaning agents
- Sodium hypochlorite

■ APPLICATIONS

✓ Interra luminaire is suitable for use in applications that include:

- Prolonged exposure to sea water

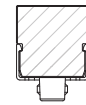
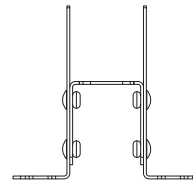
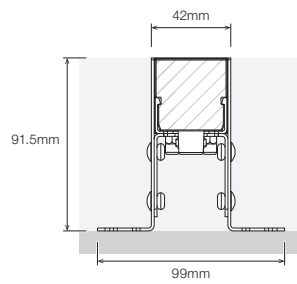
✗ **DO NOT** use Interra luminaire in applications that include

- Any exposure to chlorine liquid
- Prolonged exposure to chlorine water

■ DIMENSIONS

BODY · Stainless Steel 316

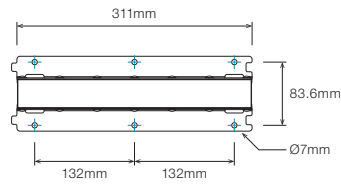
LED LUMINAIRE · PMMA



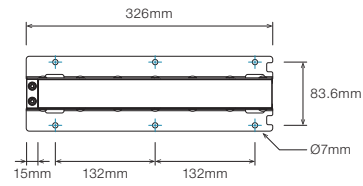
END BLOCK
Stainless Steel 316



INTERRA UG S1



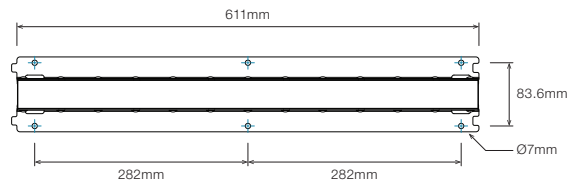
INTERRA UG S1B · End Piece



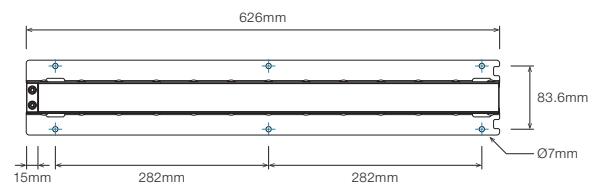
INTERRA UG S1 · Luminaire



INTERRA UG S2



INTERRA UG S2B · End Piece

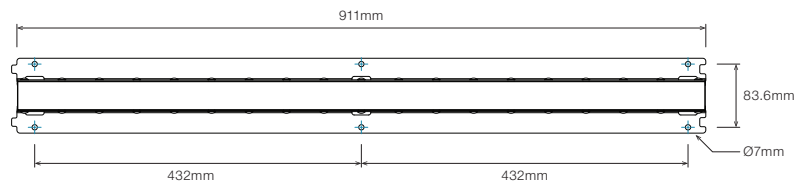


INTERRA UG S2 · Luminaire

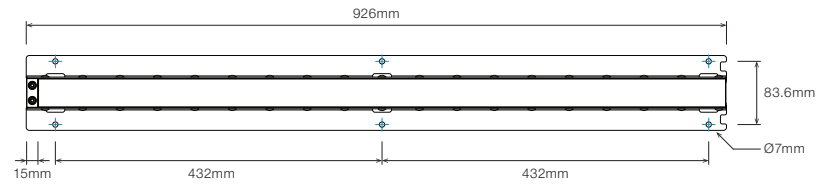


▪ DIMENSIONS

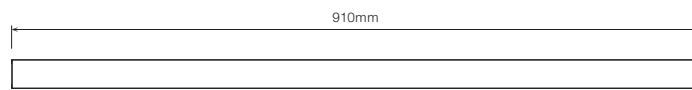
INTERRA UG S3



INTERRA UG S3B - End Piece



INTERRA UG S3 - Luminaire



WIRING CONFIGURATION

4 PIN MALE CONNECTOR · OUTDOOR



4 PIN FEMALE CONNECTOR · OUTDOOR

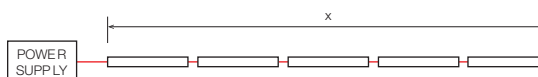


- Typical Loom Length 150mm.
- Standard leader supplied for each run length is 1,000mm (CBL-STR/LNR-FC4FO-DC-L-IP65-1M). For longer extensions of the leader, please refer to Accessories (page 7).
- Extension cables between LED fittings and driver or PSU is achievable depending on LED load, outdoor or indoor applications. Please consult Coolon for details.

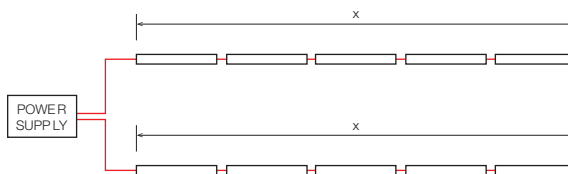
WIRING COLOUR CODE	
Brown	Positive / +24VDC
Red	Positive / +24VDC
Orange	Negative / Ground
Yellow	Negative / Ground

INSTALLATION LIMITS

SCENARIO 1

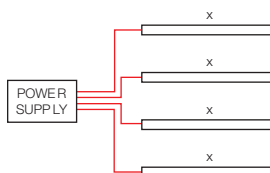


SCENARIO 2



*Junction Box by others

SCENARIO 3



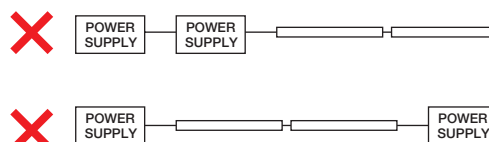
*Junction Box by others

MAX. CONTINUOUS CONNECTION LENGTH (X) CONNECTOR TYPE

10,000 mm With standard outdoor 4 pin connectors

WARNING

Avoid connecting multiple power supplies into a single circuit, unless they are specifically designed to do so.



ORDERING EXAMPLE

LNR - INTERRA - UG - 16W - 3.0KCRI - S1 - IP67



■ **WATTAGE**

16W	16.8W per metre
-----	-----------------

■ **COLOUR TEMPERATURE** PAGE 04

2.7KCRI	2700K CRI90+
3.0KCRI	3000K CRI90+
4.0KCRI	4000K CRI90+

■ **PRODUCT LENGTH** PAGE 05

S1	310mm
S2	610mm
S3	910mm
S1B	326mm End Piece
S2B	626mm End Piece
S3B	926mm End Piece

■ **IP RATING**

IP67	Outdoor Use
------	-------------

ACCESSORIES

	PRODUCT CODE	DESCRIPTION
POWER SUPPLY		
	PWR-HLG-60H-42AU	Mean Well Power Supply HLG 60W 42V IP67
	PWR-HLG-150-42AU	Mean Well Power Supply HLG 150W 42V IP67
	PWR-HLG-240-42AU	Mean Well Power Supply HLG 240W 42V IP67
DRIVER		
	DRV-DALIPOINT-1X5A	DALI 5 Amps 1 Channel LED Driver
	DRV-DALIPOINT CV NEO	DALI 10 Amps 1 Channel Outdoor LED Driver
	DRV-DIMMERPOINT-1X10A	Rotary Wall-Mount LED Driver
	DRV-RDM-P4	DMX/RDM 4 Channel LED Driver
	DRV-RDM CV NEO	Outdoor DMX/RDM 4 Channel LED Driver
CABLE EXTENSIONS		
	CBL-STR/LNR-FC4FO-DC-L-IP65-1M	1m Length, 4 Core 4x 16AWG Leader Flat Cable with Loose Wires and Female Receptacle Outdoor Connector
	CBLEXT-PRJ-WR2.1-IP65-3M	3m Length, 3 Core 2x 14AWG + 1x 18AWG Cable Extension with Outdoor Joiner
	CBLEXT-PRJ-WR2.1-IP65-5M	5m Length, 3 Core 2x 14AWG + 1x 18AWG Extension with Outdoor Joiner
	CBLEXT-PRJ-WR2.1-IP65-10M	10m Length, 3 Core 2x 14AWG + 1x 18AWG Extension with Outdoor Joiner
	600012700	Flat Cable reducer Grommet 11x5.5mm
	CBL-GEN-OC3-DC-J-IP68	3 Pin Outdoor Cable In-line Joiner Connector