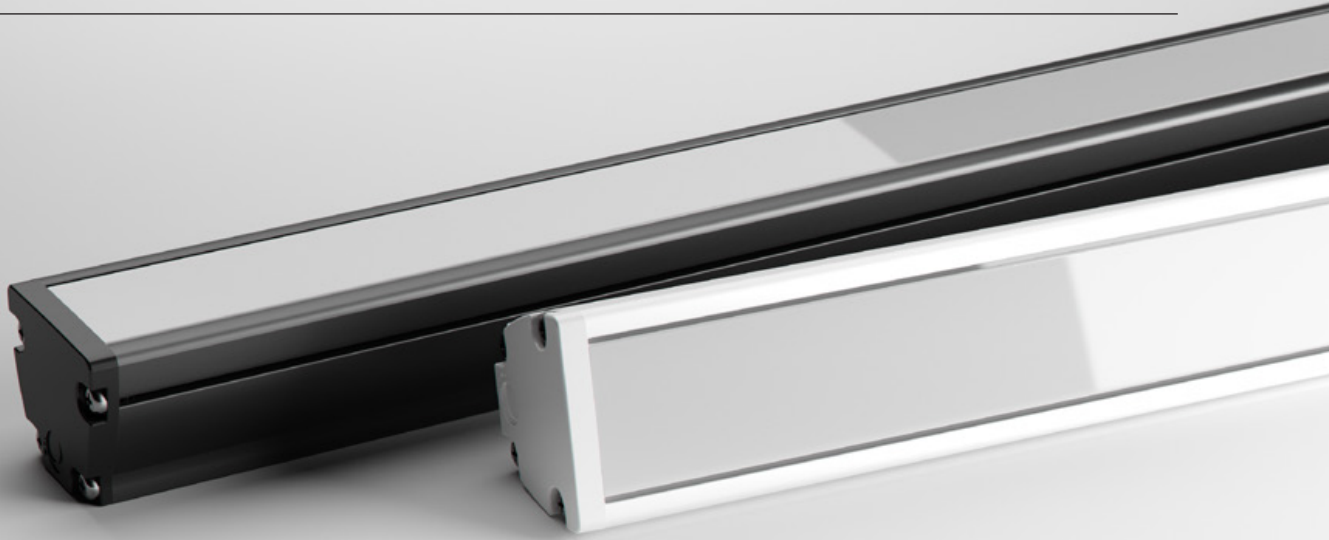




# MAX MINI PIXEL

LINEAR MEDIUM POWER LNR-MAX MINI PIXEL





Max Mini Pixel is a compact and versatile architectural colour changing luminaire. The luminaire features dynamic control, with individually addressable 90mm pixels.

The profile is fitted with a uniform glow diffuser, so no LEDs are visible along its length - making it perfect for visible applications.

---

**POWER****22W**

22W / metre

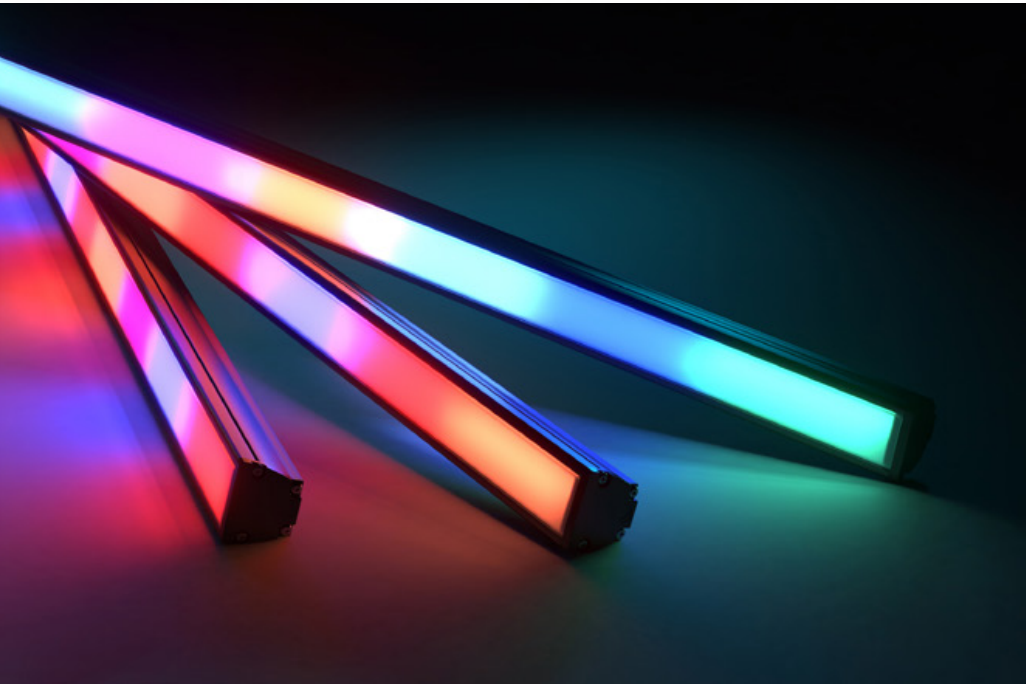
**LUMINOUS FLUX****RGBW** · Varies with colour

---

**RGBW FULL COLOUR**

## COMPACT SIZE

The reduced profile dimensions allow for ease of installation in confined spaces that could not be achieved with previous halogen counterparts. When installed in visible sight, Max Mini Pixel also pays respect to the interior design with minimal disruption to the aesthetics.



## CUSTOMISATION AT ITS BEST

Max Mini Pixel is a highly versatile and customisable luminaire. Select from a number of linear lengths, LED colours, profile colours and mounting options.



### LONG OPERATING LIFE

Coolon products use the world's most reputable LED manufacturers and the latest available standards to adequately report lumen maintenance. We strive to drive LEDs under their nominal current and use state-of-the-art heat dissipation methods, leading to durable electronics.



### VARIOUS CCT & COLOUR BINNING CONSISTENCY

All products are offered in various colour temperatures, and manufactured using tighter bins, ensuring excellent consistency and uniformity.



### 5 YEARS WARRANTY

Coolon luminaires are covered by a solid comprehensive manufacturer's warranty that covers a range of possible defects and performance parameters throughout the duration of the warranty period.



### PROUDLY MADE IN AUSTRALIA

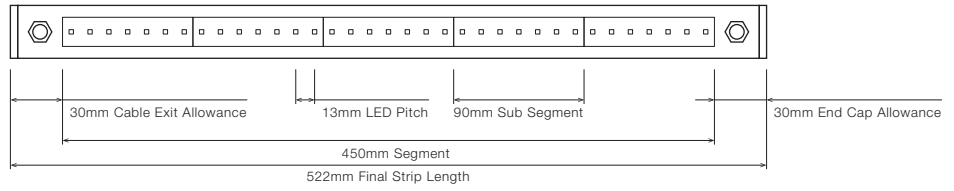
Our products are designed and manufactured in Australia. Engineered to perfection, using only the highest quality components and highly skilled labour, each luminaire is assembled and thoroughly tested to ensure that it exceeds the highest standards.

## TECHNICAL SPECIFICATIONS

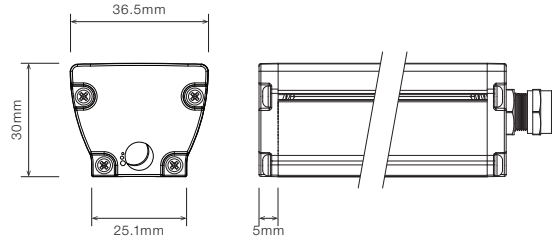
Product Code	LNR-MAX MINI PIXEL
Description	Max Mini Pixel RGBW Linear Medium Power Projector
Body	Aluminium Alloy Body
Finish	Powder Coated Black (Standard), Various Colours Available
Cover	Polycarbonate Diffused for Indoor Applications
End Caps	Polycarbonate
Segment Length (S)	450mm
Sub-Segment Length (Pixel)	90mm
Number of Sub-Segments	5
LED Pitch	13mm
LEDs Per Sub Segment	7
Operating Voltage	24VDC
Max. Power Consumption	22W / metre
LED	CREE CLQ6A-TKW RGBW, White Chip CRI 80+
Dimming / Control	Through CTR-RDM-PIXEL-IPQC (sold separately), 3 DMX (Full Frames) Channels per pixel
External Heatsink Required	No
Ambient Operating Temp	Ta -10°C to 40°C
Thermal Protection	Yes
Average Lumen Maintenance @Ta 25°C	70% @ 50,000 Hours
IP Rating	IP40 (Standard)
Max Continuous Connection Length	Please refer to installation limitations

■ DIMENSIONS

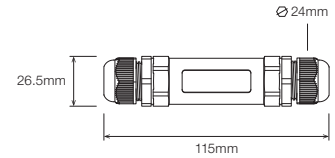
For final strip lengths please refer to the "Product Length" table.



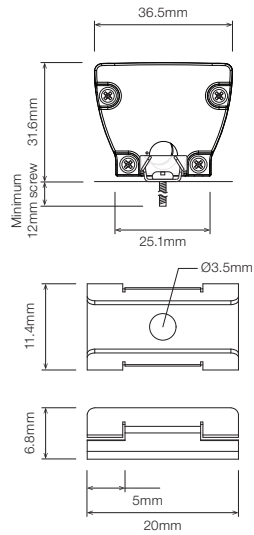
STANDARD PROFILE



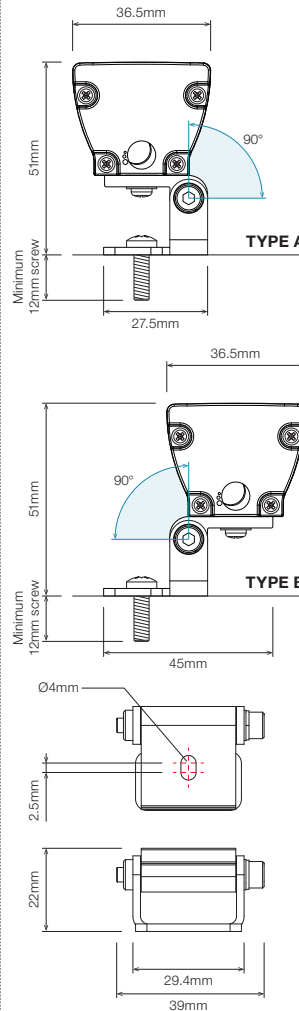
CABLE EXTENSION JOINER



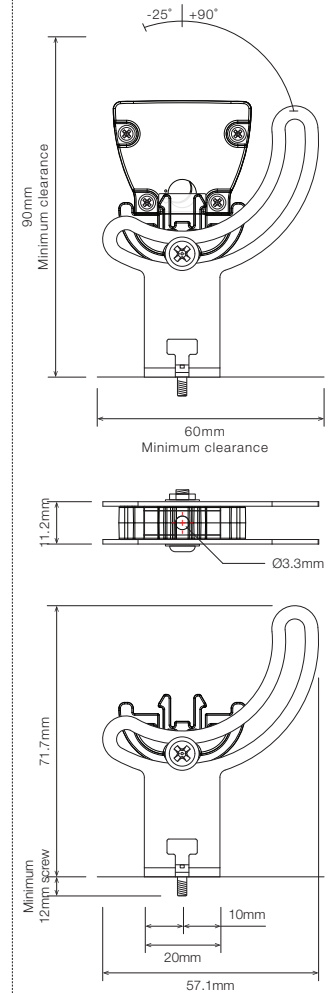
STAINLESS STEEL C-CLIP <sup>1</sup>



ROTATING MOUNTING BRACKET, TYPE A/B ROTATING CLIP <sup>1</sup>



ELEVATED ROTATING MOUNTING BRACKET <sup>1 2</sup>



<sup>1</sup> Recommended spacing between Mounting Brackets is maximum 500mm and Mounting Clips is maximum 300mm.

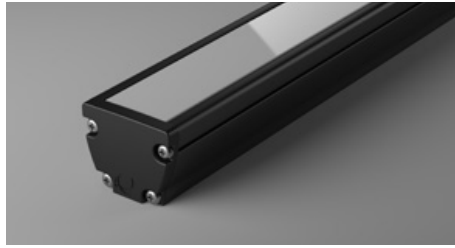
<sup>2</sup> Elevated rotating bracket is the only suitable option when wire from back is required.

■ PRODUCT LENGTH

FULL SEGMENTS	SUB SEGMENTS	EXACT STRIP LENGTH	FINAL LENGTH
S0	A1	90mm	162mm
S0	A2	180mm	252mm
S0	A3	270mm	342mm
S0	A4	360mm	432mm
S1	A0	450mm	522mm
S1	A1	540mm	612mm
S1	A2	630mm	702mm
S1	A3	720mm	792mm
S1	A4	810mm	882mm
S2	A0	900mm	972mm
S2	A1	990mm	1,062mm
S2	A2	1,080mm	1,152mm
S2	A3	1,170mm	1,242mm
S2	A4	1,260mm	1,332mm
S3	A0	1,350mm	1,422mm
S3	A1	1,440mm	1,512mm
S3	A2	1,530mm	1,602mm
S3	A3	1,620mm	1,692mm
S3	A4	1,710mm	1,782mm
S4	A0	1,800mm	1,872mm
S4	A1	1,890mm	1,962mm
S4	A2	1,980mm	2,052mm
S4	A3	2,070mm	2,142mm
S4	A4	2,160mm	2,232mm
S5	A0	2,250mm	2,322mm
S5	A1	2,340mm	2,412mm
S5	A2	2,430mm	2,502mm
S5	A3	2,520mm	2,592mm
S5	A4	2,610mm	2,682mm
S6	A0	2,700mm	2,772mm
S6	A1	2,790mm	2,862mm
S6	A2	2,880mm	2,952mm

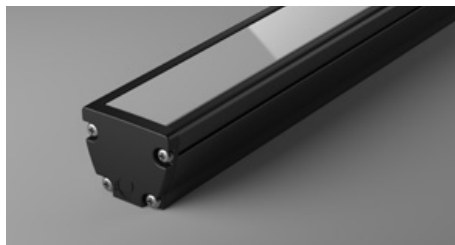
▪ DIFFUSER

**SD** - Standard Diffused - Uniform Glow

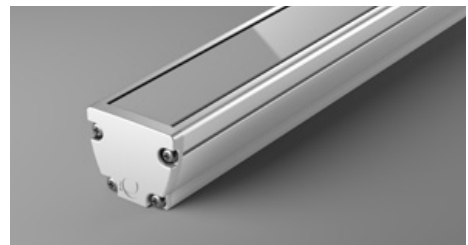


▪ PROFILE COLOUR

**BLK** - Black



**WHT** - White

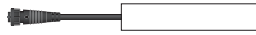






**CST** - Custom Colour <sup>1</sup>



<sup>1</sup> Custom colours available on request

WIRING CONFIGURATION

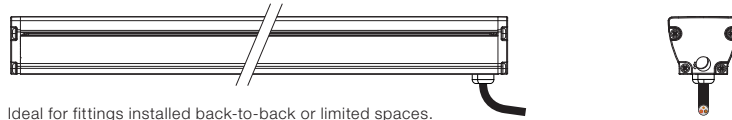
CONNECTOR TYPE	DRAWING	MALE	FEMALE
OC4MO Outdoor Connector 4 pin Male Only			
OC4MF Outdoor Connector 4 pin Male + Female			

- Wiring length 300mm with cable's outer diameter 5.8mm
- Supplied with mating connector and 300mm cable
- Please consult Coolon for details on extension cables between LED fittings, drivers and PSUs.

WIRING COLOUR CODE	
Red	+ VDC
Black	- VDC
Blue	+ DATA
White	- DATA

WIRING POSITION

WB - Wire from back



Ideal for fittings installed back-to-back or limited spaces.

WS - Wire from Side



Ideal for fittings installed individually or vertically.

IP RATING

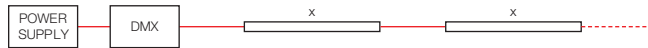
**IP40**

Protected against solid objects greater than 1mm. No protection against liquids.

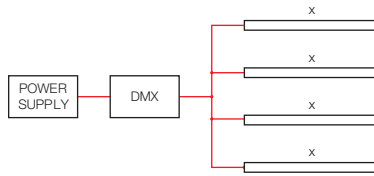


■ INSTALLATION LIMITS

SCENARIO 1



SCENARIO 2



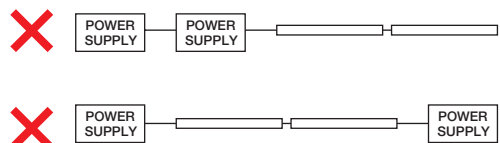
**MAX. CONTINUOUS CONNECTION LENGTH (X) CONNECTOR TYPE**

8,000 mm With standard outdoor 6 pin connectors (OC6MO)

- Please consult Coolon for details on extension cable between LED fittings, drivers and power supplies.
- Maximum distance between DMX controller and fitting is 600mm.
- Maximum distance between daisy-chained luminaires is 600mm.
- CTR-DMX Buffer TX and CTR-DMX Buffer RX available when more than 600mm is required between luminaires.

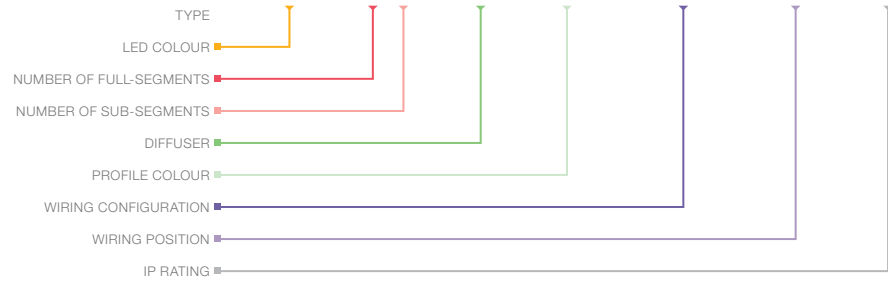
**⚠ WARNING**

Avoid connecting multiple power supplies into a single circuit, unless they are specifically designed to do so.



ORDERING EXAMPLE

**LNR - MAX MINI PIXEL - WW - S2A0 - SD - BLK - OC4MO - WB - IP40**



■ **LED COLOUR**

WW	RGB + Warm White
CW	RGB + Cool White

■ **PRODUCT LENGTH** PAGE 06

FULL SEGMENTS	SUB SEGMENTS
S1	A0
S2	A1
S3	A2
S4	A3
S5	A4
S6	

■ **DIFFUSER** PAGE 07

SD	Standard Diffused - Uniform Glow
----	----------------------------------

■ **PROFILE COLOUR** PAGE 07

BLK	Black (Standard)
WHT	White
CST	Custom Colour <sup>1</sup>

■ **WIRING CONFIGURATION** PAGE 08

OC4MO	Outdoor Connector 4 pin Male Only
OC4MF	Outdoor Connector 4 pin Male + Female

■ **WIRING POSITION** PAGE 08

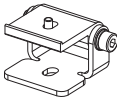
WB	Wire from Back
WS	Wire from Side

■ **IP RATING** PAGE 08

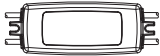
IP40	Indoor Use
------	------------

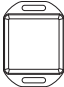
<sup>1</sup> Custom colours available on request

## ■ ACCESSORIES

	PRODUCT CODE	DESCRIPTION
<b>MOUNTING <sup>1</sup></b>		
	MC-CCLIP	Stainless Steel C-Clip
	MBR-RB-TA-MAX-BLK	Rotating Bracket, TYPE A Rotating Clip - Black
	MBR-RB-TB-MAX-BLK	Rotating Bracket, TYPE B Rotating Clip - Black
	MBR-PMAX-E-BLK	Elevated Rotating Mounting Bracket for Max Mini - Black
	MBR-PMAX-E-WHT	Elevated Rotating Mounting Bracket for Max Mini - White

<sup>1</sup> Recommended spacing between Mounting Brackets is maximum 500mm and Mounting Clips is maximum 300mm.

	PRODUCT CODE	DESCRIPTION
<b>DRIVER</b>		
	CTR-RDM PIXEL NEO	Outdoor DMX self addressing LED controller + Quick Connect

	PRODUCT CODE	DESCRIPTION
<b>DMX SIGNAL TRANSCEIVER <sup>2</sup></b>		
	CTR-DMX Buffer TX	DMX Signal Buffer Transmitter
	CTR-DMX Buffer RX	DMX Signal Buffer Receiver

<sup>2</sup> DMX Signal Transceiver allows Max Mini Pixel to be connected in series when more than 600mm is required between luminaires, converting RS485 (DMX) to TTL to transmit both data and power over 2x AWG 16 wires.

1x CTR-DMX Buffer TX & 1x CTR-DMX Buffer RX required per link.

	PRODUCT CODE	DESCRIPTION
<b>POWER SUPPLY</b>		
	PWR-HLG-60H-24AU	Mean Well Power Supply HLG 60W 24V IP67
	PWR-HLG-150H-24AU	Mean Well Power Supply HLG 150W 24V IP67
	PWR-HLG-240H-24AU	Mean Well Power Supply HLG 240W 24V IP67