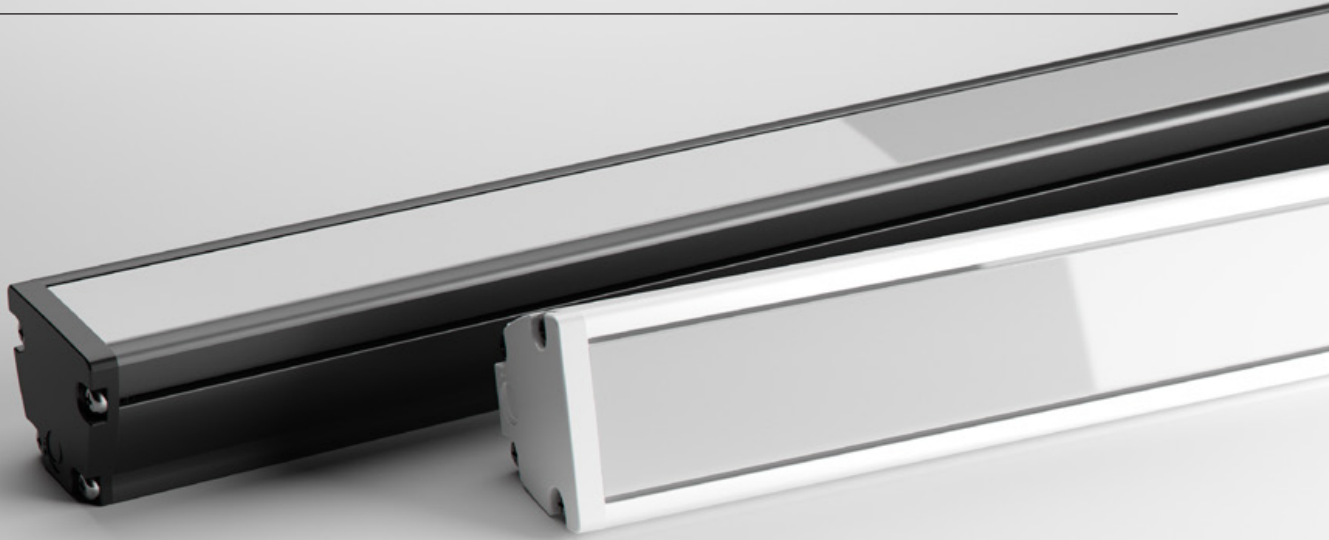


MAX MINI RGBW

LINER MEDIUM POWER LNR-MAX MINI RGBW





Max Mini RGBW is a compact and versatile architectural luminaire with a profile of only 36.5x30mm and various lineal lengths.

The profile is fitted with a uniform glow diffuser, so no LEDs are visible along its length - making it perfect for visible applications.

POWER

40W

38.4W / metre

LUMINOUS FLUX



RGBW · Varies with colour (900 lm / metre max) *

RGBW FULL COLOUR



* Output for full RGBW brightness

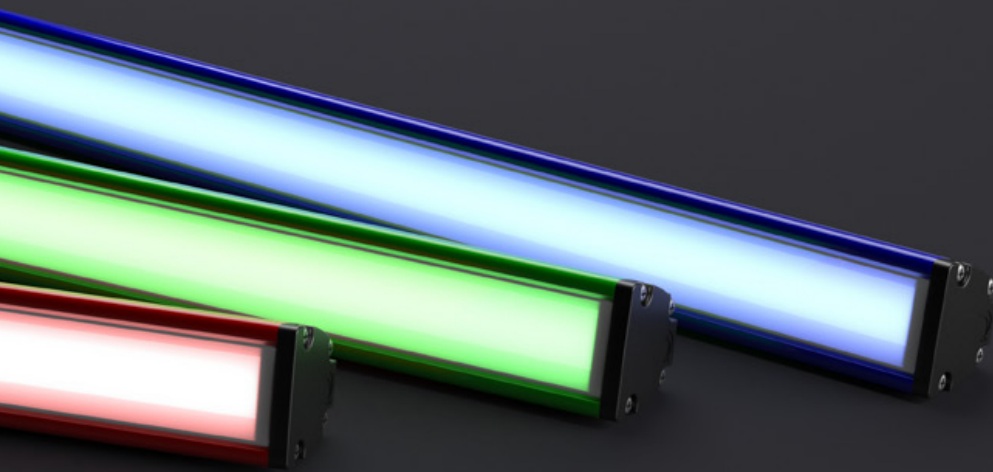
COMPACT SIZE

The reduced profile dimensions allow for ease of installation in confined spaces that could not be achieved with previous halogen counterparts. When installed in visible sight, Max Mini RGBW also pays respect to the interior design with minimal disruption to the aesthetics.



CUSTOMISATION AT ITS BEST

Max Mini RGBW is a highly versatile and customisable luminaire. Select from a number of linear lengths, LED colours, profile colours and mounting options. Max Mini RGBW can be used a marker luminaire or a flood light.



LONG OPERATING LIFE

Coolon products use the world's most reputable LED manufacturers and the latest available standards to adequately report lumen maintenance. We strive to drive LEDs under their nominal current and use state-of-the-art heat dissipation methods, leading to durable electronics.



VARIOUS CCT & COLOUR BINNING CONSISTENCY

All products are offered in various colour temperatures, and manufactured using tighter bins, ensuring excellent consistency and uniformity.



5 YEARS WARRANTY

Coolon luminaires are covered by a solid comprehensive manufacturer's warranty that covers a range of possible defects and performance parameters throughout the duration of the warranty period.



PROUDLY MADE IN AUSTRALIA

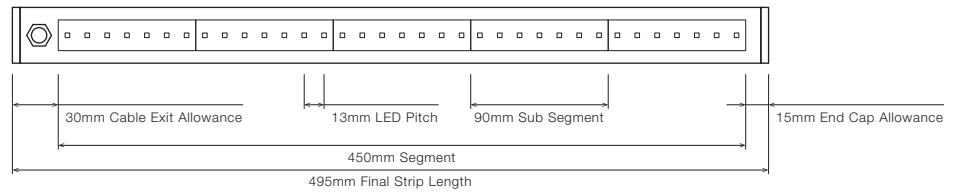
Our products are designed and manufactured in Australia. Engineered to perfection, using only the highest quality components and highly skilled labour, each luminaire is assembled and thoroughly tested to ensure that it exceeds the highest standards.

■ TECHNICAL SPECIFICATIONS

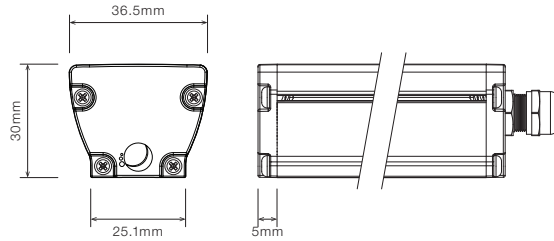
Product Code	LNR-MAX MINI RGBW
Description	Max Mini RGBW Linear Medium Power Projector
Body	Aluminium Alloy Body
Finish	Powder Coated Black (Standard), Various Colours Available
Cover	Polycarbonate Diffused for Indoor Applications
End Caps	Polycarbonate
Segment Length (S)	450mm
Sub-Segment Length (A)	90mm
Number of Sub-Segments	5
LED Pitch	13mm
LEDs Per Sub Segment	7
Operating Voltage	24VDC
Typical Power Consumption per Metre	38.4W per Metre
Typical Current	720mA per 450mm Segment
Colour Rendering Index (CRI)	80+
Dimming / Control	Through DRV-RDM-P4 or RDM-IP-P4 (sold separately)
Luminous Flux per Metre (lm/M)	Varies with colour - 900 lm / metre max (output for full RGBW brightness)
External Heatsink Required	No
Ambient Operating Temp	Ta -10°C to 40°C
Thermal Protection	Yes
Average Lumen Maintenance @Ta 25°C	70% @ 50,000 Hours
IP Rating	IP40 (Standard)
Max Continuous Connection Length	Please refer to installation limitations

■ DIMENSIONS

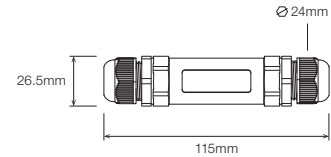
For final strip lengths please refer to the "Product Length" table.



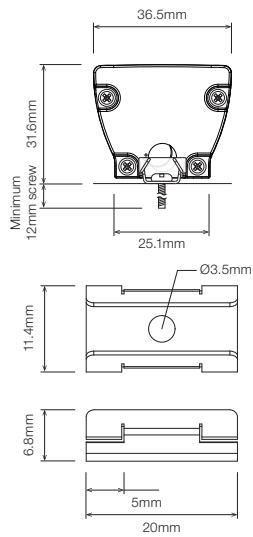
STANDARD PROFILE



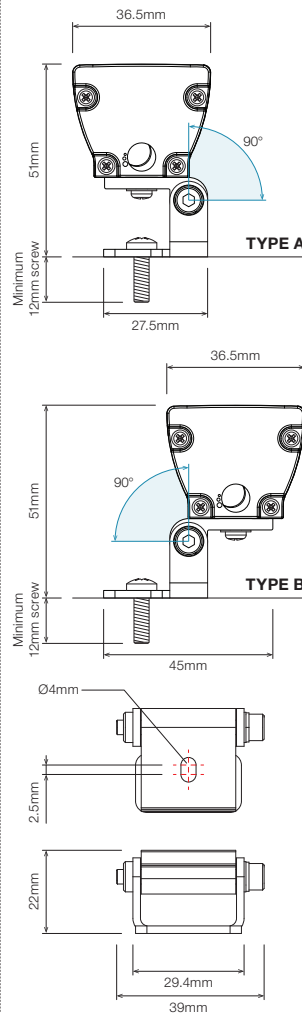
CABLE EXTENSION JOINER



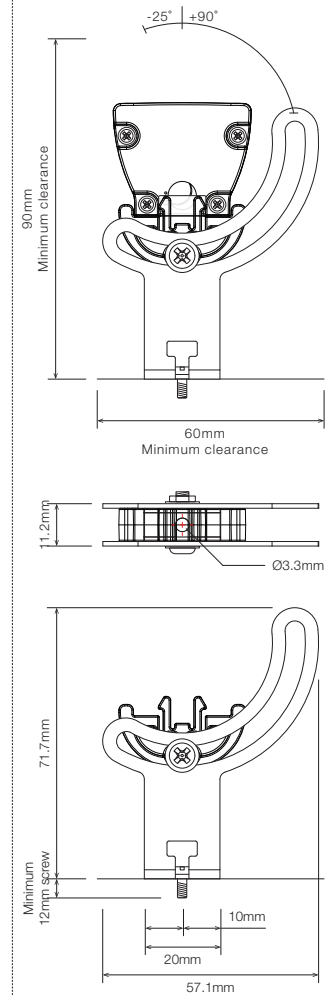
STAINLESS STEEL C-CLIP ¹



ROTATING MOUNTING BRACKET, TYPE A/B ROTATING CLIP ¹



ELEVATED ROTATING MOUNTING BRACKET ^{1 2}



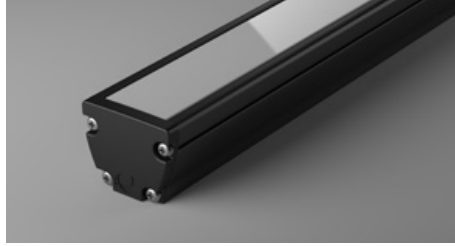
¹ Recommended spacing between Mounting Brackets is maximum 500mm and Mounting Clips is maximum 300mm.
² Elevated rotating bracket is the only suitable option when wire from back is required.

■ PRODUCT LENGTH

FULL SEGMENTS	SUB SEGMENTS	EXACT STRIP LENGTH	FINAL LENGTH
S0	A1	90mm	135mm
S0	A2	180mm	225mm
S0	A3	270mm	315mm
S0	A4	360mm	405mm
S1	A0	450mm	495mm
S1	A1	540mm	585mm
S1	A2	630mm	675mm
S1	A3	720mm	765mm
S1	A4	810mm	855mm
S2	A0	900mm	945mm
S2	A1	990mm	1,035mm
S2	A2	1,080mm	1,125mm
S2	A3	1,170mm	1,215mm
S2	A4	1,260mm	1,305mm
S3	A0	1,350mm	1,395mm
S3	A1	1,440mm	1,485mm
S3	A2	1,530mm	1,575mm
S3	A3	1,620mm	1,665mm
S3	A4	1,710mm	1,755mm
S4	A0	1,800mm	1,845mm
S4	A1	1,890mm	1,935mm
S4	A2	1,980mm	2,025mm
S4	A3	2,070mm	2,115mm
S4	A4	2,160mm	2,205mm
S5	A0	2,250mm	2,295mm
S5	A1	2,340mm	2,385mm
S5	A2	2,430mm	2,475mm
S5	A3	2,520mm	2,565mm
S5	A4	2,610mm	2,655mm
S6	A0	2,700mm	2,745mm
S6	A1	2,790mm	2,835mm
S6	A2	2,880mm	2,925mm

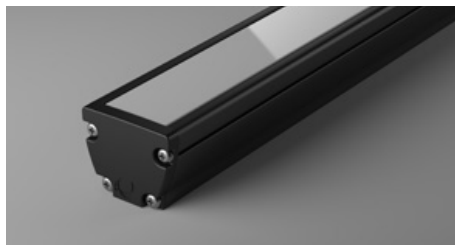
▪ DIFFUSER

SD - Standard Diffused - Uniform Glow

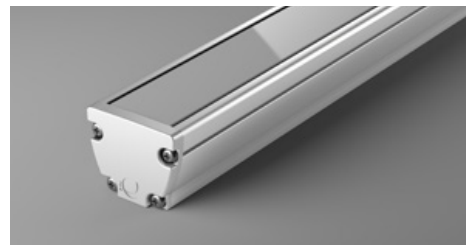


▪ PROFILE COLOUR

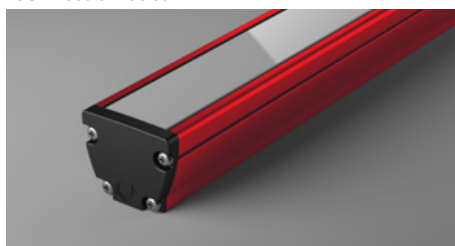
BLK - Black



WHT - White



CST - Custom Colour ¹



¹ Custom colours available on request

WIRING CONFIGURATION

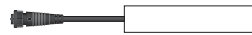
CONNECTOR TYPE

DRAWING

MALE

FEMALE

OC6MO
Outdoor Connector 6 pin Male Only



- Typical wiring length 1,000mm with cable's outer diameter 5.8mm
- Supplied with mating connector and 3,000mm cable
- Please consult Coolon for details on extension cables between LED fittings, drivers and PSUs.

WIRING COLOUR CODE	
Orange / Yellow	+ VDC
Red	- RED
Green	- GREEN
Blue	- BLUE
White	- WHITE

WIRING POSITION

WB - Wire from back



Ideal for fittings installed back-to-back or limited spaces.

WS - Wire from Side



Ideal for fittings installed individually or vertically.

IP RATING

IP40

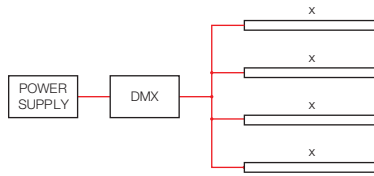
Protected against solid objects greater than 1mm.
No protection against liquids.

■ INSTALLATION LIMITS

SCENARIO 1



SCENARIO 2



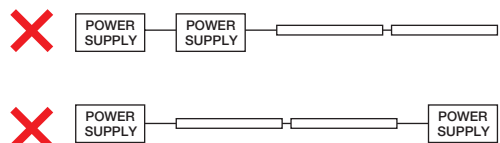
MAX. CONTINUOUS CONNECTION LENGTH (X) CONNECTOR TYPE

3,000 mm With standard outdoor 6 pin connectors (OC6MO)

- Please consult Coolon for details on extension cable between LED fittings, drivers and power supplies.

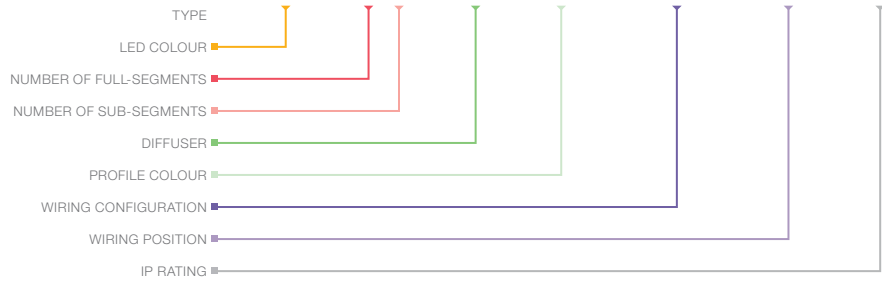
⚠ WARNING

Avoid connecting multiple power supplies into a single circuit, unless they are specifically designed to do so.



ORDERING EXAMPLE

LNR - MAX MINI RGBW - WW - S2A0 - SD - BLK - OC6MO - WB - IP40



■ **LED COLOUR**

WW	RGB + Warm White
CW	RGB + Cool White

■ **PRODUCT LENGTH** PAGE 06

FULL SEGMENTS	SUB SEGMENTS
S1	A0
S2	A1
S3	A2
S4	A3
S5	A4
S6	

■ **DIFFUSER** PAGE 07

SD	Standard Diffused - Uniform Glow
----	----------------------------------

■ **PROFILE COLOUR** PAGE 07

BLK	Black (Standard)
WHT	White
CST	Custom Colour ¹

■ **WIRING CONFIGURATION** PAGE 08

OC6MO	Outdoor Connector 6 pin Male Only
-------	-----------------------------------

■ **WIRING POSITION** PAGE 08

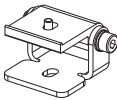
WB	Wire from Back
WS	Wire from Side

■ **IP RATING** PAGE 08


IP40	Indoor Use
------	------------

¹ Custom colours available on request

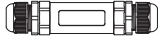
■ ACCESSORIES

	PRODUCT CODE	DESCRIPTION
MOUNTING ¹		
	MC-CCLIP	Stainless Steel C-Clip
	MBR-RB-TA-MAX-BLK	Rotating Bracket, TYPE A Rotating Clip - Black
	MBR-RB-TB-MAX-BLK	Rotating Bracket, TYPE B Rotating Clip - Black
	MBR-PMAX-E-BLK	Elevated Rotating Mounting Bracket for Max Mini - Black
	MBR-PMAX-E-WHT	Elevated Rotating Mounting Bracket for Max Mini - White

¹ Recommended spacing between Mounting Brackets is maximum 500mm and Mounting Clips is maximum 300mm.

	PRODUCT CODE	DESCRIPTION
DRIVER		
	DRV-RDM-P4	DMX/RDM 4 Channel LED Driver
	DRV-RDM-IP-P4	Outdoor DMX/RDM 4 Channel LED Driver
	DRV-RDM-IPQC-P4	Outdoor DMX/RDM 4 Channel LED Driver + Quick Connect
	DRV-RDM-IPQC05-P4	Outdoor DMX/RDM 4 Channel LED Driver + Quick Connect

	PRODUCT CODE	DESCRIPTION
POWER SUPPLY		
	PWR-HLG-60H-24AU	Mean Well Power Supply HLG 60W 24V IP67
	PWR-HLG-150H-24AU	Mean Well Power Supply HLG 150W 24V IP67
	PWR-HLG-240H-24AU	Mean Well Power Supply HLG 240W 24V IP67

	PRODUCT CODE	DESCRIPTION
CABLE EXTENSIONS		
	CBLEXT-LNR-OC6F-IP65-1M	1m Length, 6 Core Leader Cable with outdoor female connector and loose wires
	CBLEXT-LNR-OC6F-IP65-3M	3m Length, 6 Core Leader Cable with outdoor female connector and loose wires
	CBLEXT-LNR-OC6F-IP65-5M	5m Length, 6 Core Leader Cable with outdoor connector and loose wires
	CBLEXT-LNR-OC6F-IP65-10M	10m Length, 6 Core Leader Cable with outdoor connector and loose wires