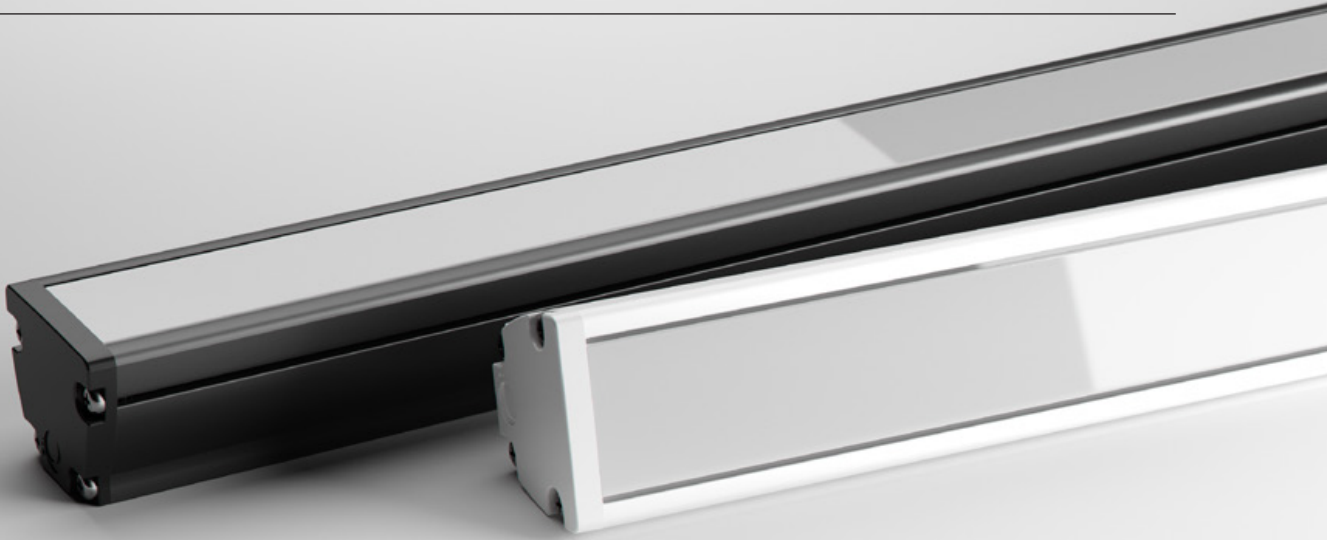




# MAX MINI RGBW IP

LINER MEDIUM POWER LNR-MAX MINI RGBW IP





Max Mini RGBW IP is a compact and versatile RGBW colour changing luminaire designed for outdoor applications.

The profile is fully encapsulated with polyurethane resin for superior longevity in outdoor environments and appears completely uniform.

---

**POWER****40W**

38.4W / metre

**LUMINOUS FLUX****RGBW** · Varies with colour (900 lm / metre max) \*

---

**RGBW FULL COLOUR**

\* Output for full RGBW brightness

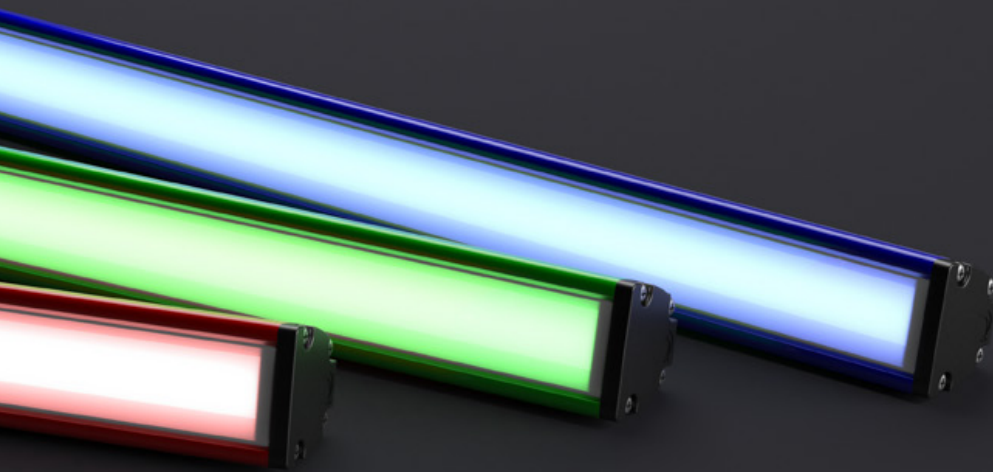
## COMPACT SIZE

The reduced profile dimensions allow for ease of installation in confined spaces that could not be achieved with previous halogen counterparts. When installed in visible sight, Max Mini RGBW IP also pays respect to the interior design with minimal disruption to the aesthetics.



## ELEGANT ENCAPSULATION

Max Mini RGBW IP utilises Coolon's encapsulation technology and signature build quality to deliver an outdoor luminaire that's uniquely resilient. IP66, IK08, shock and abrasion resistance and thermal protection just add to the appeal of this versatile all-star.



### LONG OPERATING LIFE

Coolon products use the world's most reputable LED manufacturers and the latest available standards to adequately report lumen maintenance. We strive to drive LEDs under their nominal current and use state-of-the-art heat dissipation methods, leading to durable electronics.



### VARIOUS CCT & COLOUR BINNING CONSISTENCY

All products are offered in various colour temperatures, and manufactured using tighter bins, ensuring excellent consistency and uniformity.



### 5 YEARS WARRANTY

Coolon luminaires are covered by a solid comprehensive manufacturer's warranty that covers a range of possible defects and performance parameters throughout the duration of the warranty period.



### PROUDLY MADE IN AUSTRALIA

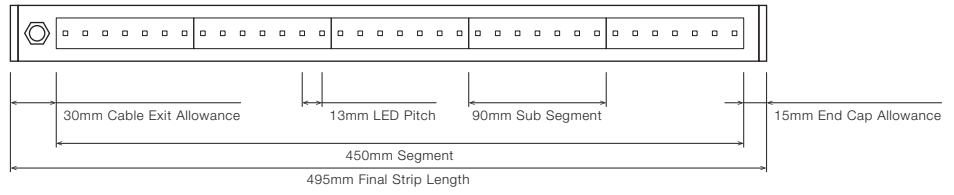
Our products are designed and manufactured in Australia. Engineered to perfection, using only the highest quality components and highly skilled labour, each luminaire is assembled and thoroughly tested to ensure that it exceeds the highest standards.

## ■ TECHNICAL SPECIFICATIONS

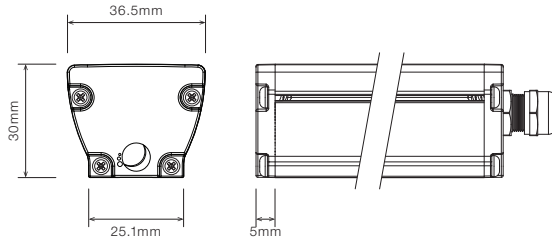
Product Code	LNR-MAX MINI RGBW IP
Description	Max Mini RGBW IP Linear Medium Power Projector
Body	Aluminium Alloy Body
Finish	Powder Coated Black (Standard), Various Colours Available
Cover	Polyurethane Translucent for Outdoor Applications
End Caps	Polycarbonate
Segment Length (S)	450mm
Sub-Segment Length (A)	90mm
Number of Sub-Segments	5
LED Pitch	13mm
LEDs Per Sub Segment	7
Operating Voltage	24VDC
Typical Power Consumption per Metre	38.4W per Metre
Typical Current	720mA per 450mm Segment
Colour Rendering Index (CRI)	80+
Dimming / Control	Through DRV-RDM-P4 or RDM-IP-P4 (sold separately)
Luminous Flux per Metre (lm/M)	Varies with colour - 900 lm / metre max (output for full RGBW brightness)
External Heatsink Required	No
Ambient Operating Temp	Ta -10°C to 40°C
Thermal Protection	Yes
Average Lumen Maintenance @Ta 25°C	70% @ 50,000 Hours
IP Rating	IP66 (Standard)
IK Rating	IK08
Max Continuous Connection Length	Please refer to installation limitations

■ DIMENSIONS

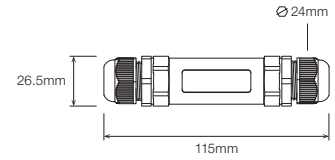
For final strip lengths please refer to the "Product Length" table.



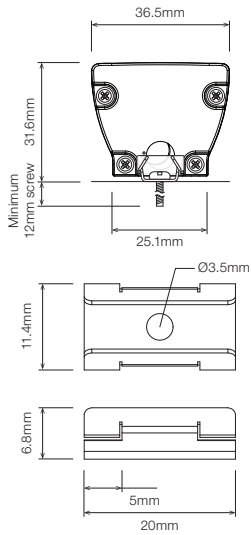
STANDARD PROFILE



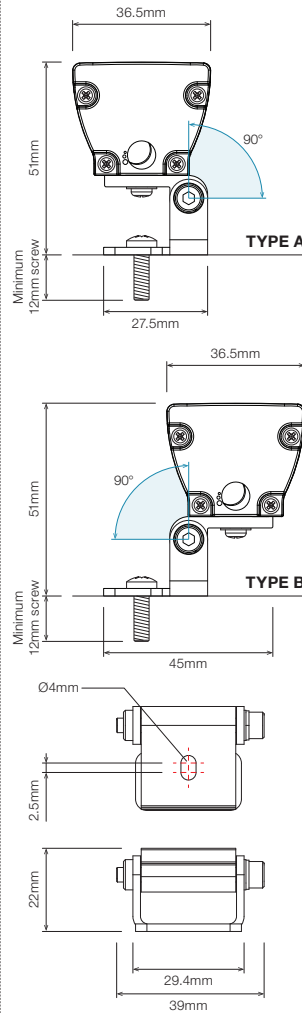
CABLE EXTENSION JOINER



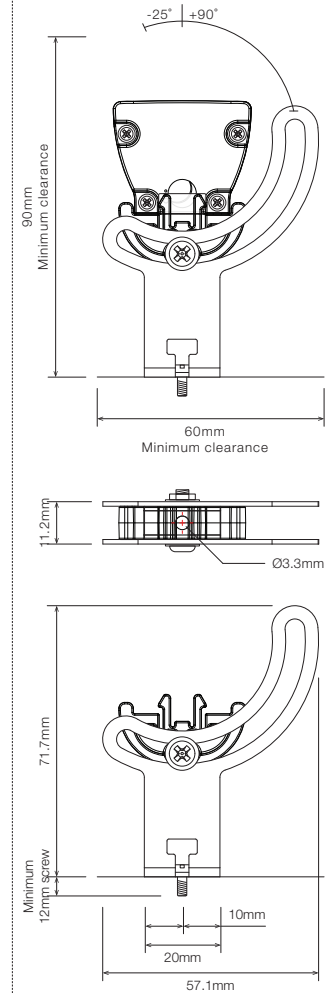
STAINLESS STEEL C-CLIP <sup>1</sup>



ROTATING MOUNTING BRACKET, TYPE A/B ROTATING CLIP <sup>1</sup>



ELEVATED ROTATING MOUNTING BRACKET <sup>1 2</sup>



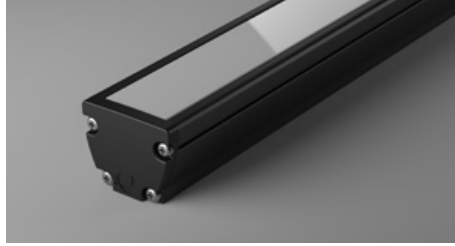
<sup>1</sup> Recommended spacing between Mounting Brackets is maximum 500mm and Mounting Clips is maximum 300mm.  
<sup>2</sup> Elevated rotating bracket is the only suitable option when wire from back is required.

■ PRODUCT LENGTH

FULL SEGMENTS	SUB SEGMENTS	EXACT STRIP LENGTH	FINAL LENGTH
S0	A1	90mm	135mm
S0	A2	180mm	225mm
S0	A3	270mm	315mm
S0	A4	360mm	405mm
S1	A0	450mm	495mm
S1	A1	540mm	585mm
S1	A2	630mm	675mm
S1	A3	720mm	765mm
S1	A4	810mm	855mm
S2	A0	900mm	945mm
S2	A1	990mm	1,035mm
S2	A2	1,080mm	1,125mm
S2	A3	1,170mm	1,215mm
S2	A4	1,260mm	1,305mm
S3	A0	1,350mm	1,395mm
S3	A1	1,440mm	1,485mm
S3	A2	1,530mm	1,575mm
S3	A3	1,620mm	1,665mm
S3	A4	1,710mm	1,755mm
S4	A0	1,800mm	1,845mm
S4	A1	1,890mm	1,935mm
S4	A2	1,980mm	2,025mm
S4	A3	2,070mm	2,115mm
S4	A4	2,160mm	2,205mm
S5	A0	2,250mm	2,295mm
S5	A1	2,340mm	2,385mm
S5	A2	2,430mm	2,475mm
S5	A3	2,520mm	2,565mm
S5	A4	2,610mm	2,655mm
S6	A0	2,700mm	2,745mm
S6	A1	2,790mm	2,835mm
S6	A2	2,880mm	2,925mm

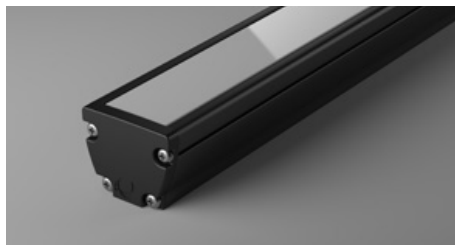
▪ DIFFUSER

**PT** · Polyurethane Translucent - Uniform Glow

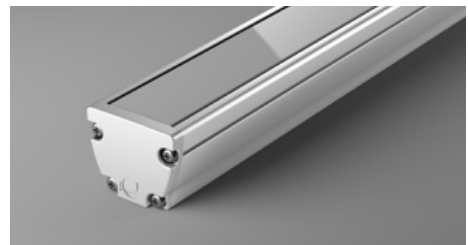


▪ PROFILE COLOUR

**BLK** · Black



**WHT** · White



**CST** · Custom Colour <sup>1</sup>



<sup>1</sup> Custom colours available on request

WIRING CONFIGURATION

CONNECTOR TYPE

DRAWING

MALE

FEMALE

OC6MO  
Outdoor Connector 6 pin Male Only



- Typical wiring length 1,000mm with cable's outer diameter 5.8mm
- Supplied with mating connector and 3,000mm cable
- Please consult Coolon for details on extension cables between LED fittings, drivers and PSUs.

WIRING COLOUR CODE	
Orange / Yellow	+ VDC
Red	- RED
Green	- GREEN
Blue	- BLUE
White	- WHITE

WIRING POSITION

WB - Wire from back



Ideal for fittings installed back-to-back or limited spaces.



WS - Wire from Side



Ideal for fittings installed individually or vertically.



IP RATING

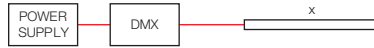
**IP66**

Fully protected against dust.  
Protected against wave-like water jets from all directions.

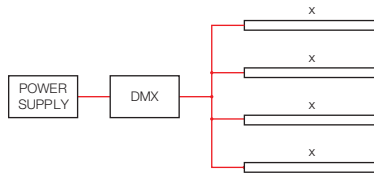


■ INSTALLATION LIMITS

SCENARIO 1



SCENARIO 2



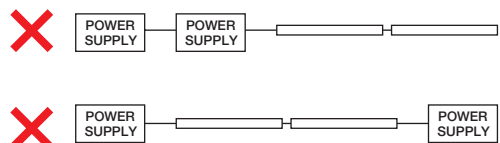
**MAX. CONTINUOUS CONNECTION LENGTH (X) CONNECTOR TYPE**

3,000 mm With standard outdoor 6 pin connectors (OC6MO)

- Please consult Coolon for details on extension cable between LED fittings, drivers and power supplies.

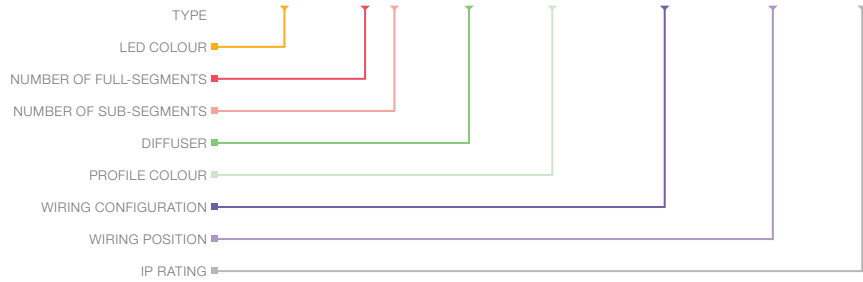
**⚠ WARNING**

Avoid connecting multiple power supplies into a single circuit, unless they are specifically designed to do so.



ORDERING EXAMPLE

**LNR - MAX MINI RGBW IP - WW - S2A0 - PT - BLK - OC6MO - WB - IP66**



■ **LED COLOUR**

WW	RGB + Warm White
CW	RGB + Cool White

■ **PRODUCT LENGTH** PAGE 06

FULL SEGMENTS	SUB SEGMENTS
S1	A0
S2	A1
S3	A2
S4	A3
S5	A4
S6	

■ **DIFFUSER** PAGE 07

PT	Polyurethane Translucent - Uniform Glow
----	---

■ **PROFILE COLOUR** PAGE 07

BLK	Black (Standard)
WHT	White
CST	Custom Colour <sup>1</sup>

■ **WIRING CONFIGURATION** PAGE 08

OC6MO	Outdoor Connector 6 pin Male Only
-------	-----------------------------------

■ **WIRING POSITION** PAGE 08

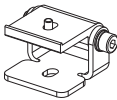
WB	Wire from Back
WS	Wire from Side

■ **IP RATING** PAGE 08


IP66	Outdoor Use
------	-------------


<sup>1</sup> Custom colours available on request

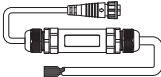
## ■ ACCESSORIES

	PRODUCT CODE	DESCRIPTION
<b>MOUNTING <sup>1</sup></b>		
	MC-CCLIP	Stainless Steel C-Clip
	MBR-RB-TA-MAX-BLK	Rotating Bracket, TYPE A Rotating Clip - Black
	MBR-RB-TB-MAX-BLK	Rotating Bracket, TYPE B Rotating Clip - Black
	MBR-PMAX-E-BLK	Elevated Rotating Mounting Bracket for Max Mini - Black
	MBR-PMAX-E-WHT	Elevated Rotating Mounting Bracket for Max Mini - White

<sup>1</sup> Recommended spacing between Mounting Brackets is maximum 500mm and Mounting Clips is maximum 300mm.

	PRODUCT CODE	DESCRIPTION
<b>DRIVER</b>		
	DRV-RDM-P4	DMX / RDM 4 Channel LED Driver
	DRV-RDM CV NEO	Neo Outdoor DMX / RDM 4 Channel LED Driver

	PRODUCT CODE	DESCRIPTION
<b>POWER SUPPLY</b>		
	PWR-HLG-60H-24AU	Mean Well Power Supply HLG 60W 24V IP67
	PWR-HLG-150H-24AU	Mean Well Power Supply HLG 150W 24V IP67
	PWR-HLG-240H-24AU	Mean Well Power Supply HLG 240W 24V IP67

	PRODUCT CODE	DESCRIPTION
<b>CABLE EXTENSIONS</b>		
	CBL-LNR-OC6FO-DC-L-IP65-3M	3m Length, 6 Core Leader Cable with Outdoor Female Connector and Loose Wires (Type B)
	CBL-LNR-OC6FO-DC-L-IP65-5M	5m Lengths, 5 Core Loose Wire Leader Cable with Outdoor Joiner to OC6 Female Connector
	CBL-LNR-OC6FO-DC-L-IP65-10M	10m Lengths, 5 Core Loose Wire Leader Cable with Outdoor Joiner to OC6 Female Connector
	CBL-LNR-OC6FO-DC-L-IP65-15M	15m Lengths, 5 Core Loose Wire Leader Cable with Outdoor Joiner to OC6 Female Connector
	CBL-LNR-OC6FO-DC-L-IP65-20M	20m Lengths, 5 Core Loose Wire Leader Cable with Outdoor Joiner to OC6 Female Connector