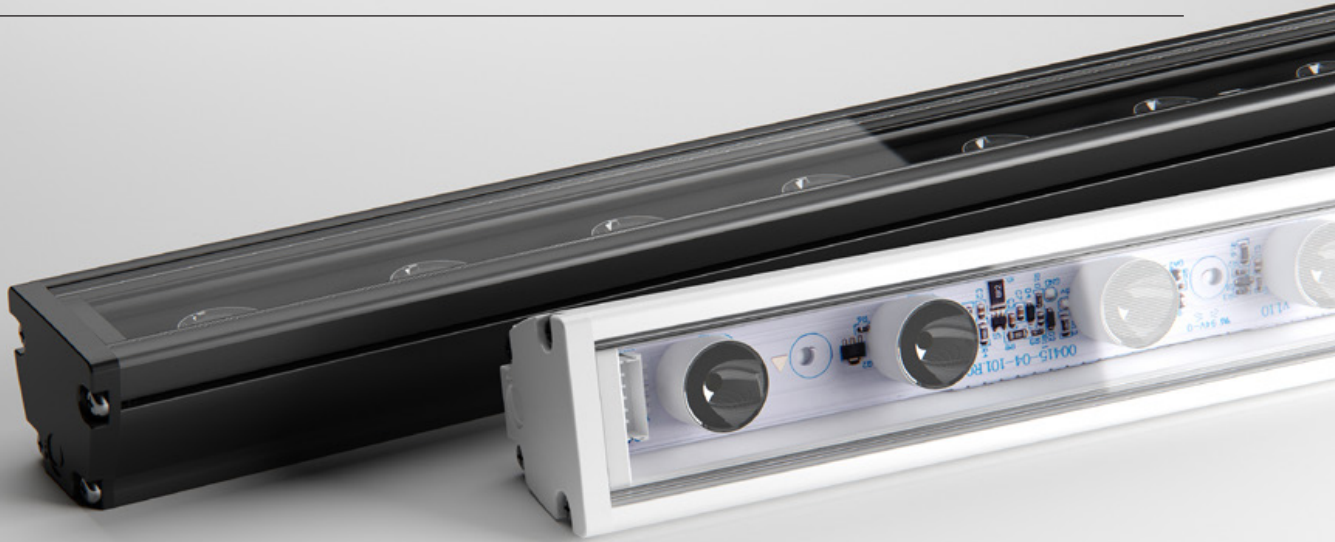




MAX MINI TW

LINEAR MEDIUM POWER LNR-MAX MINI TW





Max Mini TW is a medium-power tunable white (2700K – 6500K) linear luminaire with precision optics.

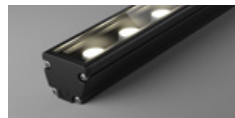
Optic selection and the assistance of a range of brackets ensure easy installation and accurate aiming, allowing you to execute your design with accurate results.

POWER

30W

30W / metre

LUMINOUS FLUX ¹



SC • 2,096 – 2,660 lm / metre

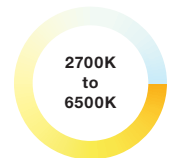


HL • 980 – 1,242 lm / metre



ML • 960 – 1,246 lm / metre

TUNABLE WHITE



2700K
to
6500K

TUNABLE WHITE

Reproduce and maintain perfect white light ranging from 2700 to 6500k. Colour temperature (CCT) and intensity control made simple.

COMPACT SIZE

Reduced profile dimensions allows for ease of installation in confined spaces that could not be achieved with previous halogen counterparts. Installed in visible sight the Max Mini TW also pays respect to the interior design with minimal disruption to the aesthetics.



LONG OPERATING LIFE

Coolon products use the world's most reputable LED manufacturers and the latest available standards to adequately report lumen maintenance. We strive to drive LEDs under their nominal current and use state-of-the-art heat dissipation methods, leading to durable electronics.



VARIOUS CCT & COLOUR BINNING CONSISTENCY

All products are offered in various colour temperatures, and manufactured using tighter bins, ensuring excellent consistency and uniformity.



5 YEARS WARRANTY

Coolon luminaires are covered by a solid comprehensive manufacturer's warranty that covers a range of possible defects and performance parameters throughout the duration of the warranty period.



PROUDLY MADE IN AUSTRALIA

Our products are designed and manufactured in Australia. Engineered to perfection, using only the highest quality components and highly skilled labour, each luminaire is assembled and thoroughly tested to ensure that it exceeds the highest standards.

TECHNICAL SPECIFICATIONS

| | |
|---|---|
| Product Code | LNR-MAX MINI TW |
| Description | Max Mini Tunable White Linear Flood Light |
| Body | Aluminium Alloy Body |
| Finish | Powder Coated White (Standard), Various Colours Available |
| Cover | Polycarbonate |
| End Caps | Polycarbonate |
| Segment Length (S) | 238mm |
| Segment Width | 22mm |
| LED Pitch | 34mm |
| LEDs Per Segment | 7 |
| Operating Voltage | 24VDC |
| Typical Power Consumption | 6.89W per 238mm Segment |
| Typical Power Consumption per metre | 28.9W |
| Typical Current | 287mA per 238mm Segment |
| Colour Temperature Range | 2700K – 6500K ¹ |
| Colour Rendering Index (CRI) | 80+ |
| Dimmable | Through EldoLed LINEARdrive range (sold separately) |
| Typical Luminous Flux per Metre (lm/m) | 960 – 2,660lm / metre ² |
| External Heatsink Required | No |
| Ambient Operating Temp | -10°C to 50°C |
| Reported Lumen Maintenance TM21-11 (@ Ts = 85°C, If = 500mA) | L70 (10K) > 60,000 hours L90 (10K) > 40,400 hours |
| | Max Mini TW max. operating values (@ Ts = 85°C, If = 283mA) |
| IP Rating | IP40 |
| IK Rating | N/A |
| Max Continuous Connection Length | Please refer to installation limits |

POWER & LUMEN OUTPUT

| MAX MINI TW | | 20D | 30D | O4015D | RO4015D |
|-----------------------------|------------|----------|----------|----------|----------|
| POWER 30W / Metre | ■ SC 4200K | 2,408 lm | 2,338 lm | 2,382 lm | 2,096 lm |
| | ■ SC 6500K | 2,660 lm | 2,550 lm | 2,606 lm | 2,294 lm |
| | ■ HL 4200K | 1,242 lm | 1,206 lm | 1,113 lm | 980 lm |
| | ■ ML 4200K | 1,246 lm | 1,210 lm | 1,097 lm | 960 lm |

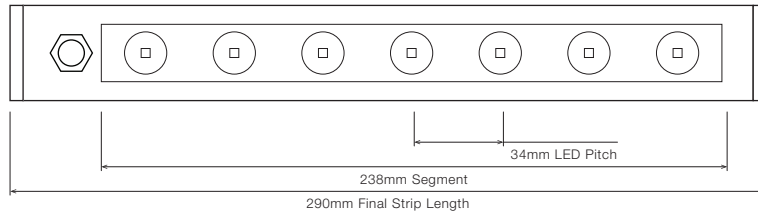
■ All photometry measures taken at CW: 50% + WW:50% intensities ~4200 K, unless specified.

¹ CCT may vary on the extremes depending on LED binning

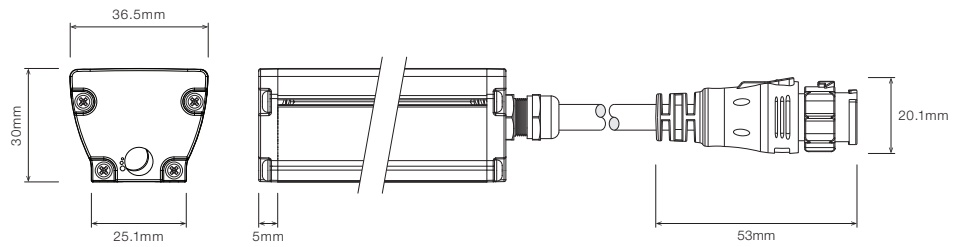
² Maximum lumen output measured at cool white side (~6500K)

■ DIMENSIONS

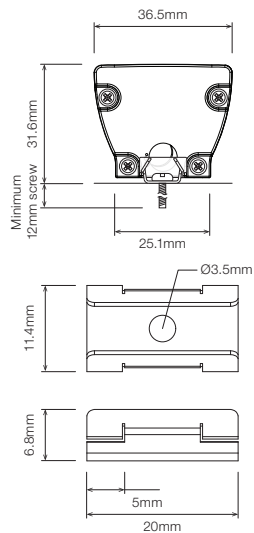
For final strip lengths please refer to the "Product Length" table.



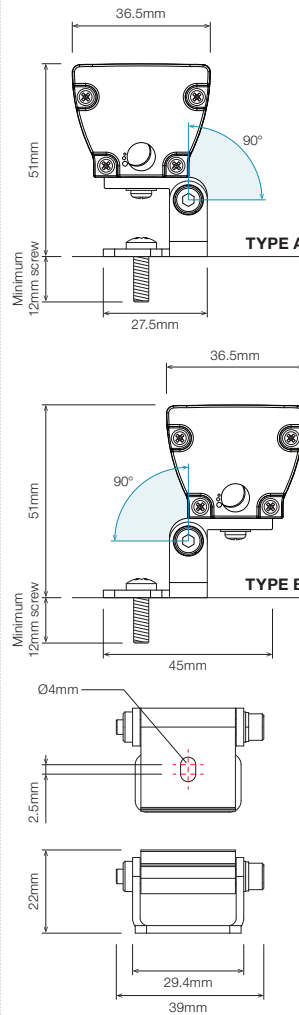
STANDARD PROFILE



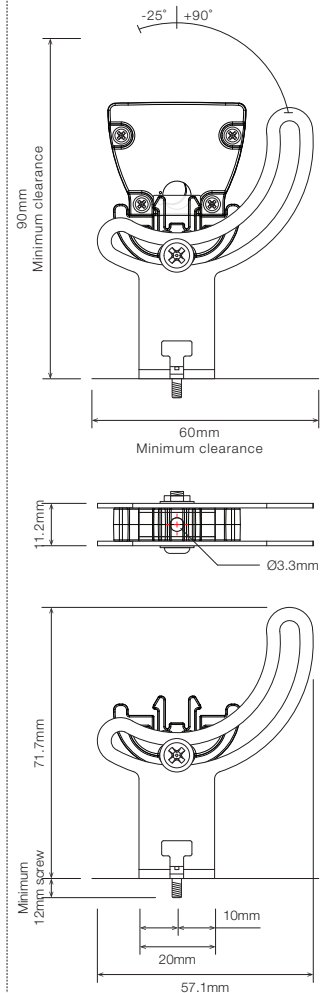
STAINLESS STEEL C-CLIP ¹



ROTATING MOUNTING BRACKET, TYPE A/B ROTATING CLIP ¹



ELEVATED ROTATING MOUNTING BRACKET ^{1 2}

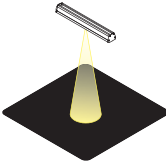
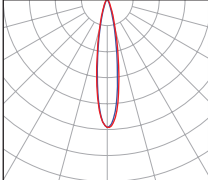
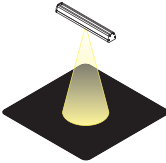
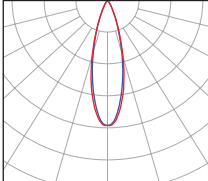
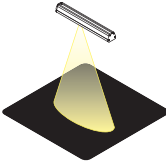
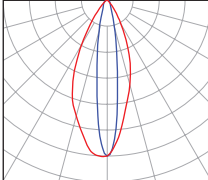
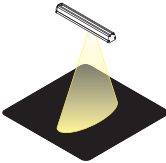
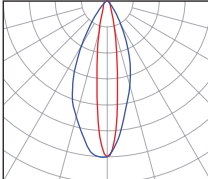


¹ Recommended spacing between Mounting Brackets is maximum 500mm and Mounting Clips is maximum 300mm.
² Elevated rotating bracket is the only suitable option when wire from back is required.

▪ PRODUCT LENGTH

| FULL SEGMENTS | EXACT STRIP LENGTH | FINAL LENGTH (WR4OS / OC4MO) | FINAL LENGTH (WR4BS / OC4MF) |
|---------------|--------------------|------------------------------|------------------------------|
| S1 | 238mm | 290mm | 305mm |
| S2 | 476mm | 530mm | 545mm |
| S3 | 714mm | 770mm | 785mm |
| S4 | 952mm | 1,010mm | 1,025mm |
| S5 | 1,190mm | 1,250mm | 1,265mm |
| S6 | 1,428mm | 1,490mm | 1,505mm |
| S7 | 1,666mm | 1,730mm | 1,745mm |
| S8 | 1,904mm | 1,970mm | 1,985mm |
| S9 | 2,142mm | 2,210mm | 2,225mm |
| S10 | 2,380mm | 2,450mm | 2,465mm |
| S11 | 2,618mm | 2,690mm | 2,705mm |
| S12 | 2,856mm | 2,930mm | 2,945mm |

▪ POLAR DISTRIBUTION

| OPTIC | | POLAR DISTRIBUTION |
|--|--|---|
| 20D Narrow Beam 20° Beam |  |  |
| 30D Medium Beam 30° Beam |  |  |
| O4015D Oval Beam Oval 40° x 15° Beam |  |  |
| R4015D Oval Rotated Beam Oval 15° x 40° Beam |  |  |

▪ DIFFUSER

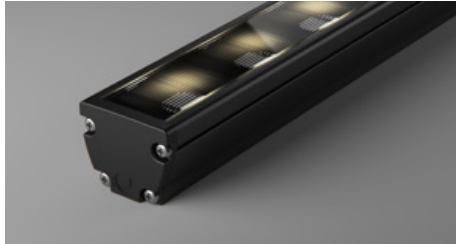
SC · Standard Clear Cover



HL · Honeycomb Louvre



ML · Micro Louvre

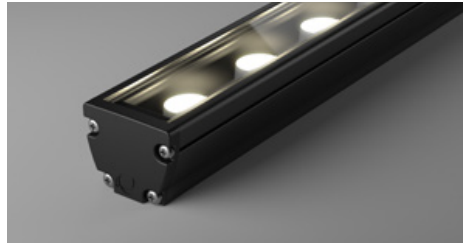


▪ PROFILE COLOUR

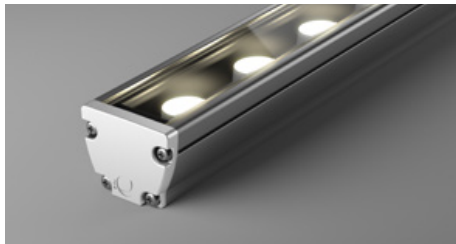
WHT · White



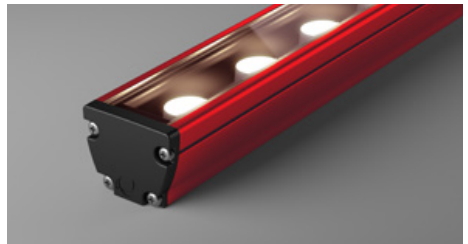
BLK · Black



GRY · Grey



CST · Custom Colour ¹



¹ Custom colours available on request

WIRING CONFIGURATION

| CONNECTOR TYPE | DRAWING | MALE | FEMALE |
|--|---------|------|--------|
| WR4OS Wire 4 Core One Side | | | |
| WR4BS Wire 4 Core Both Sides | | | |
| OC4MO Outdoor Connector 4 pin Male Only | | | |
| OC4MF Outdoor Connector 4 pin Male + Female | | | |

CONNECTOR PIN-OUTS



Output Connector 4 pin (Male)



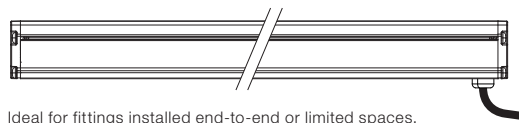
Output Connector 4 pin (Female)

- 1 - WW (Black)
- 2 - CW (Brown)
- 3 - + WW (Orange)
- 4 - + CW (Red)

- Wiring length 1,000mm with cable's outer diameter 6.8mm
- Please consult Coolon for details on extension cables between LED fittings, drivers and PSUs.

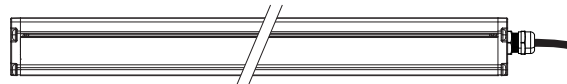
WIRING POSITION

WB - Wire from back



Ideal for fittings installed end-to-end or limited spaces.

WS - Wire from Side



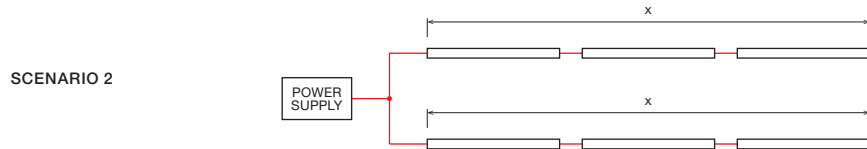
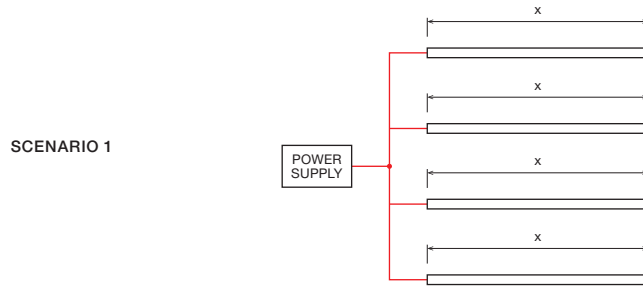
Ideal for fittings installed individually or vertically.

IP RATING

IP40

Protected against solid objects greater than 1mm.
No protection against liquids.

■ INSTALLATION LIMITS



MAX. CONTINUOUS CONNECTION LENGTH (X) CONNECTOR TYPE

| | |
|----------|--|
| 2,930 mm | 1,000mm long cable with 4 Pin Quick Connector (see accessories for mating leader cables) |
|----------|--|

- Please consult Coolon for details on extension cable between LED fittings, drivers and power supplies.
- Luminaire limits are designed considering a tunable white configuration is used on the drivers, where both colours are never operating at 100% intensity at the same time.

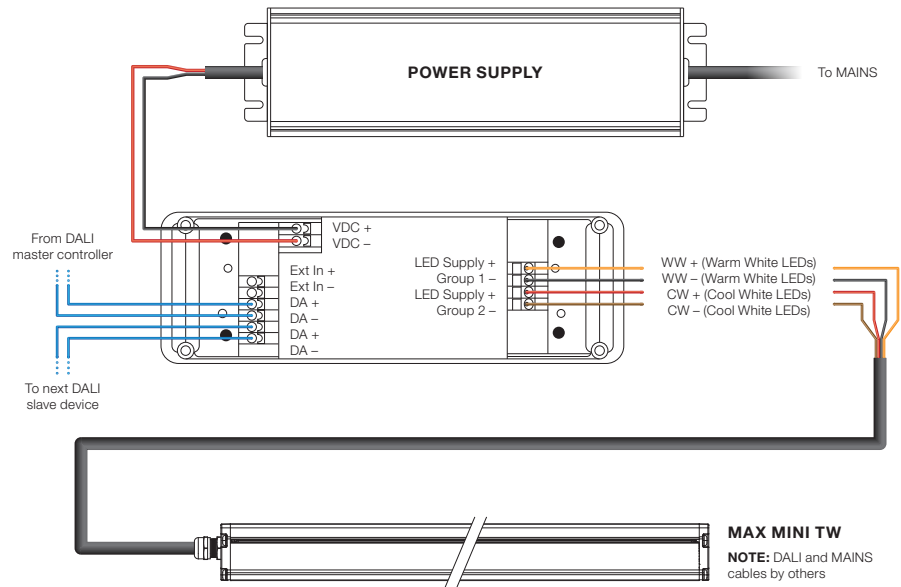
⚠ WARNING

Avoid connecting multiple power supplies into a single circuit, unless they are specifically designed to do so.

✘

✘

WIRING DIAGRAMS



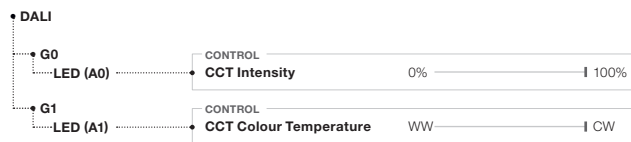
PRE LOADED DALI CONFIGURATION & CONTROL

DRIVER

LINEARdrive DRV-LN200D-D2Z2D

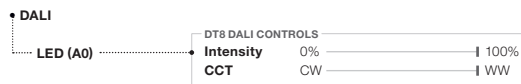
CONTROL PROTOCOL

DALI Device Type 6 (DT6)



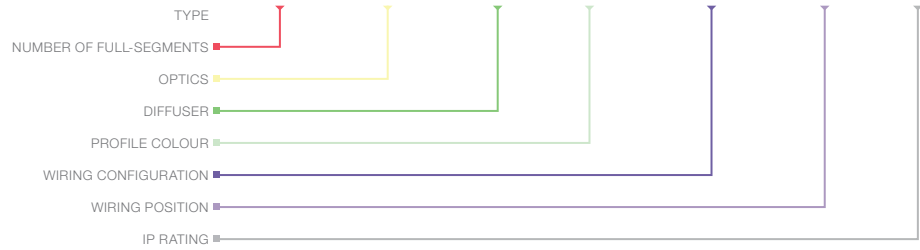
LINEARdrive DRV-LN200D-D2Z2C

DALI Device Type 8 (DT8)



ORDERING EXAMPLE

LNR - MAX MINI TW - S2 - O4015D - SC - WHT - OC4MO - WB - IP40



■ **PRODUCT LENGTH**

| | WR4OS / OC4MO | WR4BS / OC4MF |
|-----|----------------------|----------------------|
| S1 | 290mm | 305mm |
| S2 | 530mm | 545mm |
| S3 | 770mm | 785mm |
| S4 | 1010mm | 1,025mm |
| S5 | 1,250mm | 1,265mm |
| S6 | 1,490mm | 1,505mm |
| S7 | 1,730mm | 1,745mm |
| S8 | 1,970mm | 1,985mm |
| S9 | 2,210mm | 2,225mm |
| S10 | 2,450mm | 2,465mm |
| S11 | 2,690mm | 2,705mm |
| S12 | 2,930mm | 2,945mm |

■ **OPTICS**

| | |
|--------|---------------------|
| 20D | 20° Beam |
| 30D | 30° Beam |
| O4015D | Oval 40° x 15° Beam |
| R4015D | Oval 15° x 40° Beam |

■ **DIFFUSER**

| | |
|----|------------------|
| SC | Standard Clear |
| HL | Honeycomb Louvre |
| ML | Micro Louvre |

■ **PROFILE COLOUR**

| | |
|-----|----------------------------|
| WHT | White (Standard) |
| BLK | Black |
| GRY | Grey |
| CST | Custom Colour ¹ |

■ **WIRING CONFIGURATION**

| | |
|-------|---------------------------------------|
| WR4OS | Wire 4 Core One Side |
| WR4BS | Wire 4 Core Both Sides |
| OC4MO | Outdoor Connector 4 pin Male Only |
| OC4MF | Outdoor Connector 4 pin Male + Female |

■ **WIRING POSITION**

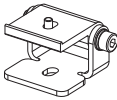
| | |
|----|----------------|
| WB | Wire from Back |
| WS | Wire from Side |

■ **IP RATING**


| | |
|------|------------|
| IP40 | Indoor Use |
|------|------------|

¹ Custom colours available on request

■ ACCESSORIES

| | PRODUCT CODE | DESCRIPTION |
|---|----------------|---|
| MOUNTING ¹ | | |
|  | MC-CCLIP | Stainless Steel C-Clip |
| | MBR-RB-TA-BLK | Rotating Bracket, TYPE A Rotating Clip - Black |
| | MBR-RB-TB-BLK | Rotating Bracket, TYPE B Rotating Clip - Black |
| | MBR-PMAX-E-BLK | Elevated Rotating Mounting Bracket for Max Mini - Black |
| | MBR-PMAX-E-WHT | Elevated Rotating Mounting Bracket for Max Mini - White |

¹ Recommended spacing between Mounting Brackets is maximum 500mm and Mounting Clips is maximum 300mm.

| | PRODUCT CODE | DESCRIPTION |
|---|------------------|---|
| DRIVER | | |
|  | DRV-LN200D-D2Z2C | LINEARdrive, 224W, DALI DT8 , 2 Control CH, 2 Outputs |
| | DRV-LN200D-D2Z2D | LINEARdrive, 224W, DALI DT6 , 2 Control CH, 2 Outputs |

| | PRODUCT CODE | DESCRIPTION |
|---|----------------|-------------------------------------|
| POWER SUPPLY FOR OUTDOOR USE | | |
|  | PWR-HLG60-24V | Mean Well Power Supply HLG 60W 24V |
| | PWR-HLG150-24V | Mean Well Power Supply HLG 150W 24V |
| | PWR-HLG240-24V | Mean Well Power Supply HLG 240W 24V |

| | PRODUCT CODE | DESCRIPTION |
|---|----------------------------|--|
| CABLE EXTENSIONS | | |
|  | CBL-LNR-OC4FO-DC-L-IP65-4M | 4m Length, 4 Core Leader Cable with outdoor Female Quick Connector and loose wires |