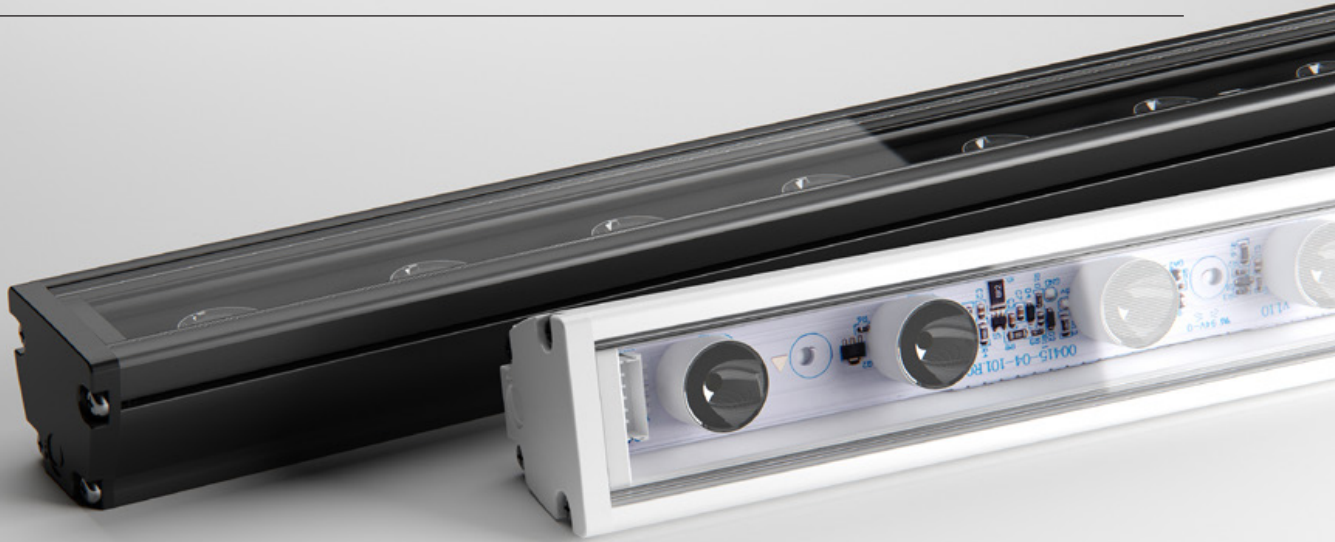




MAX MINI TW IP

LINEAR MEDIUM POWER LNR-MAX MINI TW IP





Max Mini TW IP is a medium-power, outdoor, tunable white (2700K – 6500K) linear luminaire with precision optics.

Unique encapsulation methods and a robust form factor provide IP66/IK08 for unbeatable durability and resistance against exterior conditions.

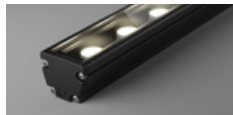
Optic selection and the assistance of a range of brackets ensure easy installation and accurate aiming, allowing you to execute your design with accurate results.

POWER

LUMINOUS FLUX ¹

TUNABLE WHITE

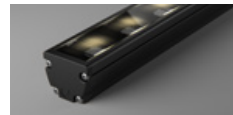
30W
30W / metre



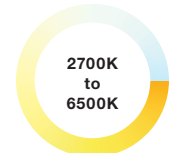
PC • 1,431 – 2,060 lm / metre



HL • 669 – 963 lm / metre



ML • 660 – 967 lm / metre



¹ All photometry measures taken at CW: 50% + WW:50% intensities –4200 K, unless specified.

TUNABLE WHITE

Reproduce and maintain perfect white light ranging from 2700 to 6500k. Colour temperature (CCT) and intensity control made simple.

ELEGANT ENCAPSULATION

Max Mini TW IP utilises Coolon's encapsulation technology and signature build quality to deliver an outdoor luminaire that's uniquely resilient. IP66, IK08, shock and abrasion resistance and thermal protection just add to the appeal of this versatile all-star.



LONG OPERATING LIFE

Coolon products use the world's most reputable LED manufacturers and the latest available standards to adequately report lumen maintenance. We strive to drive LEDs under their nominal current and use state-of-the-art heat dissipation methods, leading to durable electronics.



VARIOUS CCT & COLOUR BINNING CONSISTENCY

All products are offered in various colour temperatures, and manufactured using tighter bins, ensuring excellent consistency and uniformity.



5 YEARS WARRANTY

Coolon luminaires are covered by a solid comprehensive manufacturer's warranty that covers a range of possible defects and performance parameters throughout the duration of the warranty period.



PROUDLY MADE IN AUSTRALIA

Our products are designed and manufactured in Australia. Engineered to perfection, using only the highest quality components and highly skilled labour, each luminaire is assembled and thoroughly tested to ensure that it exceeds the highest standards.

TECHNICAL SPECIFICATIONS

Product Code	LNR-MAX MINI TW IP
Description	Max Mini Tunable White Linear Outdoor Flood Light
Body	Aluminium Alloy Body
Finish	Powder Coated White (Standard), Various Colours Available
Cover	Polyurethane
End Caps	Polycarbonate
Segment Length (S)	238mm
Segment Width	22mm
LED Pitch	34mm
LEDs Per Segment	7
Operating Voltage	24VDC
Typical Power Consumption	6.89W per 238mm Segment
Typical Power Consumption per metre	28.9W
Typical Current	287mA per 238mm Segment
Colour Temperature Range	2700K – 6500K ¹
Colour Rendering Index (CRI)	80+
Dimmable	Through EldoLed LINEARdrive range (sold separately)
Typical Luminous Flux per Metre (lm/m)	660 – 2,060lm / metre ²
External Heatsink Required	No
Ambient Operating Temp	-10°C to 50°C
Reported Lumen Maintenance TM21-11 (@ Ts = 85°C, If = 500mA)	L70 (10K) > 60,000 hours L90 (10K) > 40,400 hours
	Max Mini TW IP max. operating values (@ Ts = 85°C, If = 283mA)
IP Rating	IP66
IK Rating	IK08
Max Continuous Connection Length	Please refer to installation limits

POWER & LUMEN OUTPUT

MAX MINI TW IP		20D	30D	O4015D	RO4015D
POWER 30W / Metre	■ PC 4200K	1,868 lm	1,811 lm	1,626 lm	1,431 lm
	■ PC 6500K	2,060 lm	1,975 lm	1,779 lm	1,566 lm
	■ HL 4200K	963 lm	934 lm	760 lm	669 lm
	■ ML 4200K	967 lm	937 lm	748 lm	660 lm

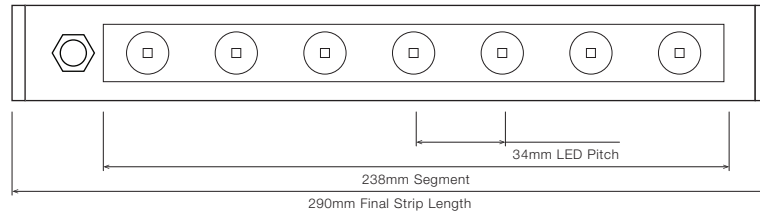
■ All photometry measures taken at CW: 50% + WW:50% intensities ~4200 K, unless specified.

¹ CCT may vary on the extremes depending on LED binning

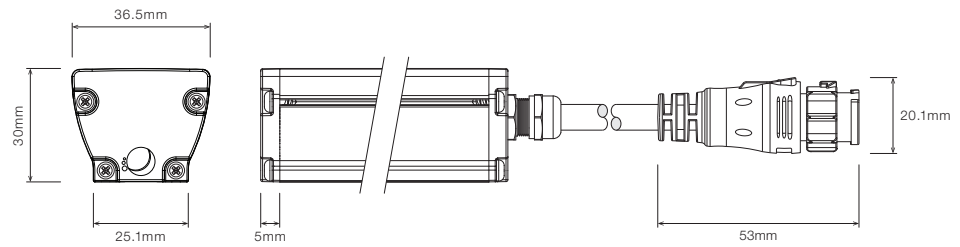
² Maximum lumen output measured at cool white side (~6500K)

■ DIMENSIONS

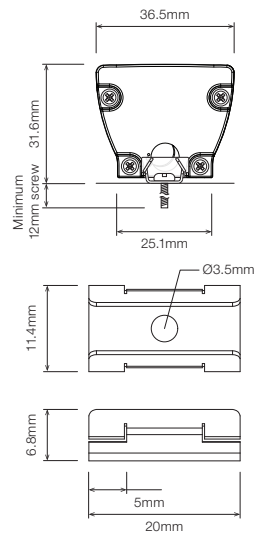
For final strip lengths please refer to the "Product Length" table.



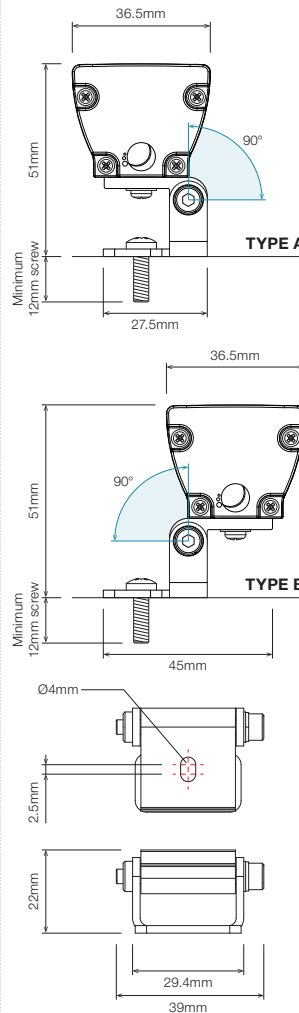
STANDARD PROFILE



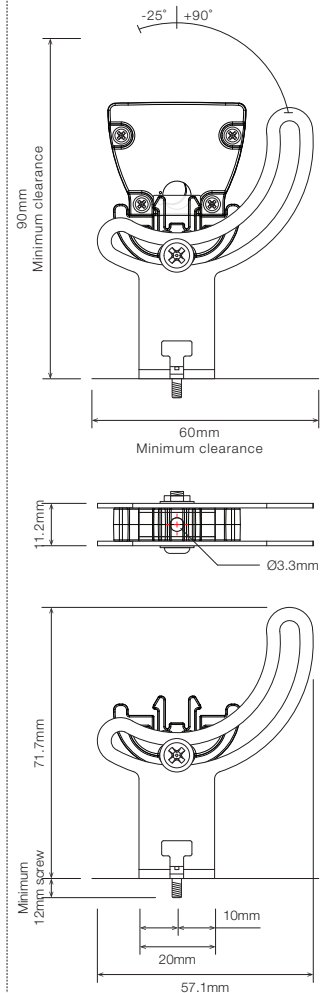
STAINLESS STEEL C-CLIP ¹



ROTATING MOUNTING BRACKET, TYPE A/B ROTATING CLIP ¹



ELEVATED ROTATING MOUNTING BRACKET ^{1 2}

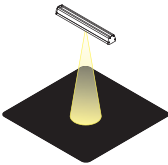
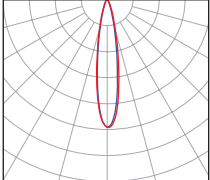
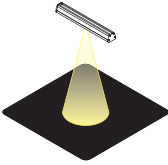
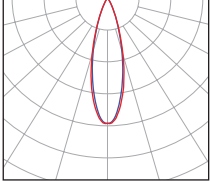
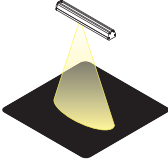
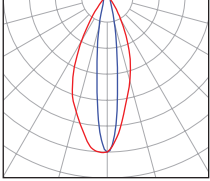
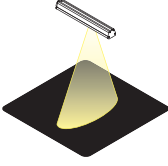
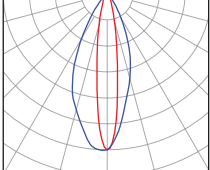


¹ Recommended spacing between Mounting Brackets is maximum 500mm and Mounting Clips is maximum 300mm.
² Elevated rotating bracket is the only suitable option when wire from back is required.

▪ PRODUCT LENGTH

FULL SEGMENTS	EXACT STRIP LENGTH	FINAL LENGTH (OC4MO)	FINAL LENGTH (OC4MF)
S1	238mm	290mm	305mm
S2	476mm	530mm	545mm
S3	714mm	770mm	785mm
S4	952mm	1,010mm	1,025mm
S5	1,190mm	1,250mm	1,265mm
S6	1,428mm	1,490mm	1,505mm
S7	1,666mm	1,730mm	1,745mm
S8	1,904mm	1,970mm	1,985mm
S9	2,142mm	2,210mm	2,225mm
S10	2,380mm	2,450mm	2,465mm
S11	2,618mm	2,690mm	2,705mm
S12	2,856mm	2,930mm	2,945mm

▪ POLAR DISTRIBUTION

OPTIC		POLAR DISTRIBUTION
20D Narrow Beam 20° Beam		
30D Medium Beam 30° Beam		
O4015D Oval Beam Oval 40° x 15° Beam		
R4015D Oval Rotated Beam Oval 15° x 40° Beam		

▪ DIFFUSER

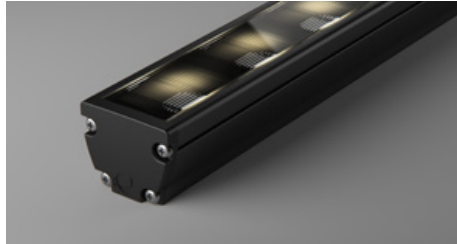
PC · Polyurethane Clear



HL · Honeycomb Louvre

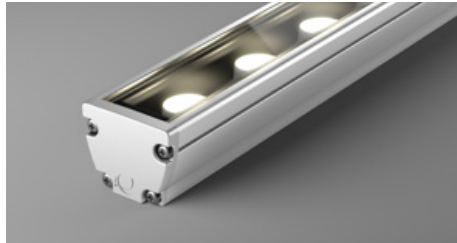


ML · Micro Louvre



▪ PROFILE COLOUR

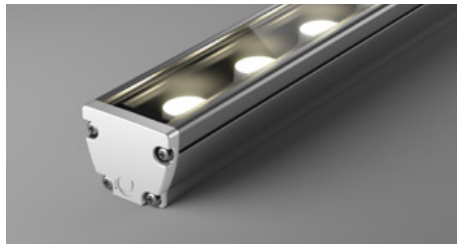
WHT · White



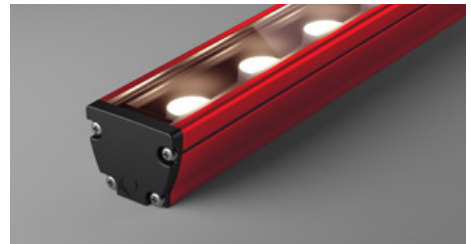
BLK · Black



GRY · Grey








CST · Custom Colour ¹



¹ Custom colours available on request

WIRING CONFIGURATION

CONNECTOR TYPE	DRAWING	MALE	FEMALE
OC4MO Outdoor Connector 4 pin Male Only			
OC4MF Outdoor Connector 4 pin Male + Female			

CONNECTOR PIN-OUTS



Output Connector 4 pin (Male)



Output Connector 4 pin (Female)

- 1 – WW (Black)
- 2 – CW (Brown)
- 3 + WW (Orange)
- 4 + CW (Red)

- Wiring length 1,000mm with cable's outer diameter 6.8mm
- Please consult Coolon for details on extension cables between LED fittings, drivers and PSUs.

WIRING POSITION

WB - Wire from back



Ideal for fittings installed end-to-end or limited spaces.



WS - Wire from Side



Ideal for fittings installed individually or vertically.

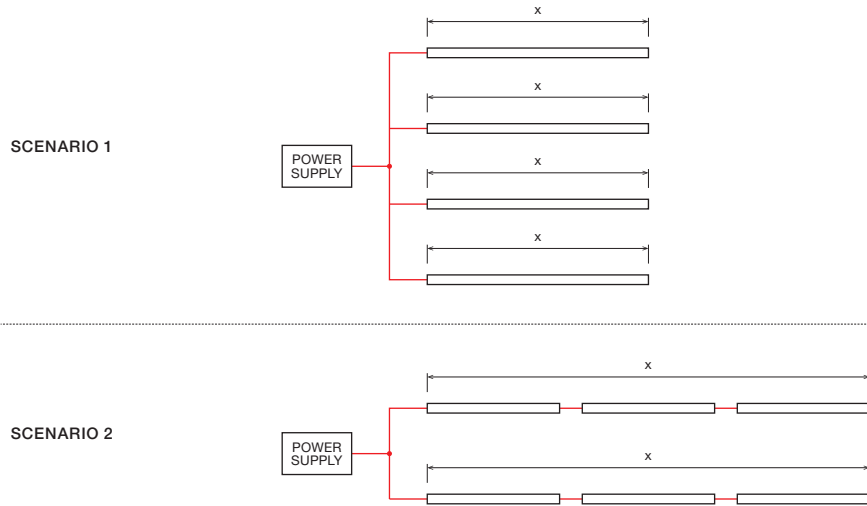


IP RATING

IP66

Fully protected against dust.
Protected against wave-like water jets from all directions.

■ INSTALLATION LIMITS



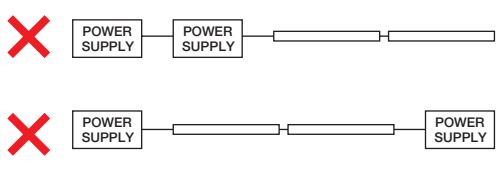
MAX. CONTINUOUS CONNECTION LENGTH (X) CONNECTOR TYPE

2,930 mm	1,000mm long cable with 4 Pin Quick Connector (see accessories for mating leader cables)
----------	--

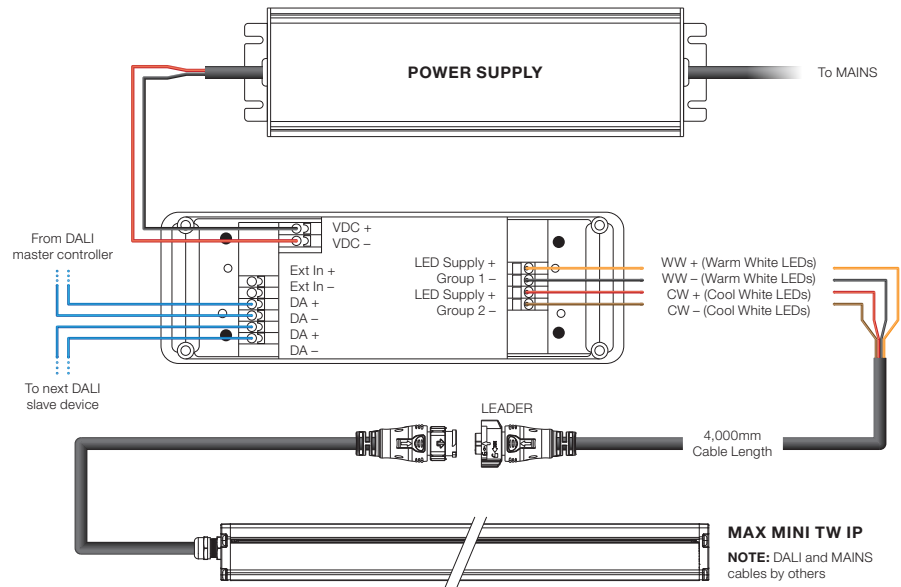
- Please consult Coolon for details on extension cable between LED fittings, drivers and power supplies.
- Luminaire limits are designed considering a tunable white configuration is used on the drivers, where both colours are never operating at 100% intensity at the same time.

⚠ WARNING

Avoid connecting multiple power supplies into a single circuit, unless they are specifically designed to do so.



WIRING DIAGRAMS



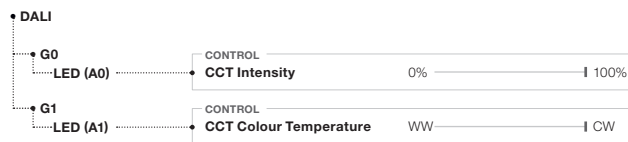
PRE LOADED DALI CONFIGURATION & CONTROL

DRIVER

LINEARdrive DRV-LN200D-D2Z2D

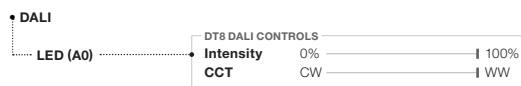
CONTROL PROTOCOL

DALI Device Type 6 (DT6)



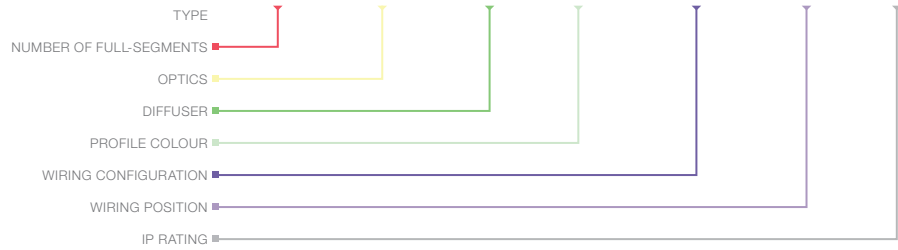
LINEARdrive DRV-LN200D-D2Z2C

DALI Device Type 8 (DT8)



ORDERING EXAMPLE

LNR - MAX MINI TW IP - S2 - O4015D - PC - WHT - OC4MO - WB - IP66



■ **PRODUCT LENGTH**

	OC4MO	OC4MF
S1	290mm	305mm
S2	530mm	545mm
S3	770mm	785mm
S4	1010mm	1,025mm
S5	1,250mm	1,265mm
S6	1,490mm	1,505mm
S7	1,730mm	1,745mm
S8	1,970mm	1,985mm
S9	2,210mm	2,225mm
S10	2,450mm	2,465mm
S11	2,690mm	2,705mm
S12	2,930mm	2,945mm

■ **OPTICS**

20D	20° Beam
30D	30° Beam
O4015D	Oval 40° x 15° Beam
R4015D	Oval 15° x 40° Beam

■ **DIFFUSER**

PC	Polyurethane Clear
HL	Honeycomb Louvre
ML	Micro Louvre

■ **PROFILE COLOUR**

WHT	White (Standard)
BLK	Black
GRY	Grey
CST	Custom Colour ¹

■ **WIRING CONFIGURATION**

OC4MO	Outdoor Connector 4 pin Male Only
OC4MF	Outdoor Connector 4 pin Male + Female

■ **WIRING POSITION**

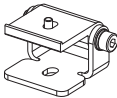
WB	Wire from Back
WS	Wire from Side

■ **IP RATING**

IP66	Outdoor Use
------	-------------


¹ Custom colours available on request


■ ACCESSORIES

	PRODUCT CODE	DESCRIPTION
MOUNTING ¹		
	MC-CCLIP	Stainless Steel C-Clip
	MBR-RB-TA-BLK	Rotating Bracket, TYPE A Rotating Clip - Black
	MBR-RB-TB-BLK	Rotating Bracket, TYPE B Rotating Clip - Black
	MBR-PMAX-E-BLK	Elevated Rotating Mounting Bracket for Max Mini - Black
	MBR-PMAX-E-WHT	Elevated Rotating Mounting Bracket for Max Mini - White

¹ Recommended spacing between Mounting Brackets is maximum 500mm and Mounting Clips is maximum 300mm.

	PRODUCT CODE	DESCRIPTION
DRIVER		
	DRV-LN200D-D2Z2C	LINEARdrive, 224W, DALI DT8 , 2 Control CH, 2 Outputs
	DRV-LN200D-D2Z2D	LINEARdrive, 224W, DALI DT6 , 2 Control CH, 2 Outputs

	PRODUCT CODE	DESCRIPTION
POWER SUPPLY FOR OUTDOOR USE		
	PWR-HLG60-24V	Mean Well Power Supply HLG 60W 24V
	PWR-HLG150-24V	Mean Well Power Supply HLG 150W 24V
	PWR-HLG240-24V	Mean Well Power Supply HLG 240W 24V

	PRODUCT CODE	DESCRIPTION
CABLE EXTENSIONS		
	CBL-LNR-OC4FO-DC-L-IP65-4M	4m Length, 4 Core Leader Cable with outdoor Female Quick Connector and loose wires