

# ADURO CL

LED STRIP STR-ADURO CL



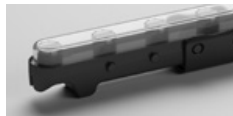


Aduro CL is a revolutionary semi-rigid chain LED light that allows full flexibility around curved spaces. Inspired by the possibilities of organic architecture and equipped with unprecedented flexibility, individually adjustable modules, a wide range of optics and various CCTs, Aduro CL brings tailored lighting solutions and full creative control over curved spaces.

**POWER** **LUMINOUS FLUX**

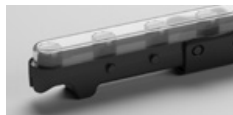
---

**7W**  
7W / metre



657 lm / metre

**14W**  
14W / metre



1,315 lm / metre

**COLOUR TEMPERATURE**

---

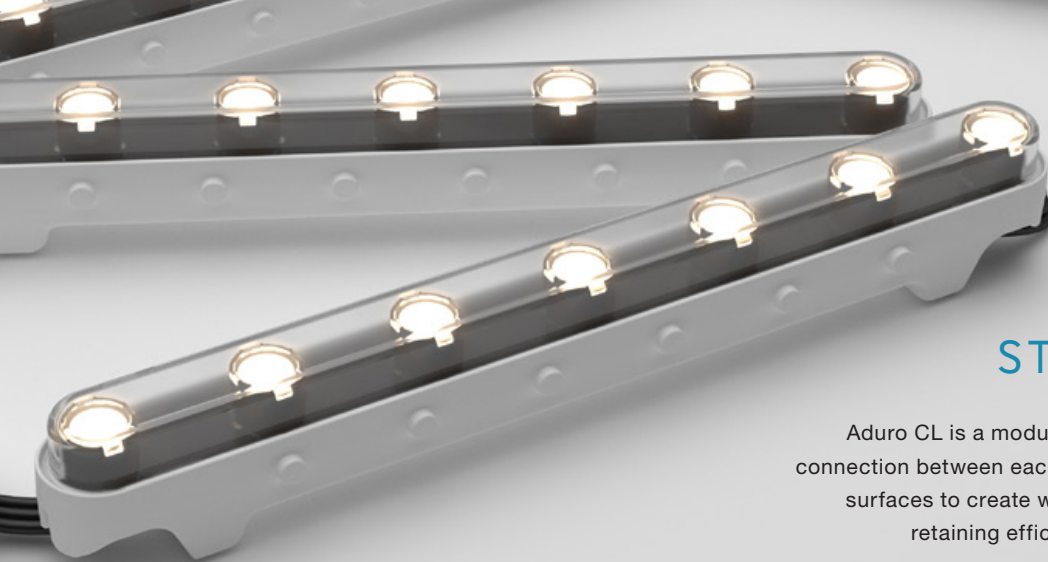


• Specific values measured at 4000K using O209 optics. See technical specification page for more options. Specific lumen output and IES files available on request.



**INSTALLATION MANUAL**

Scan the QR Code or visit [www.coolon.com.au/dl/arch-str-aduro-cl-manual](http://www.coolon.com.au/dl/arch-str-aduro-cl-manual)

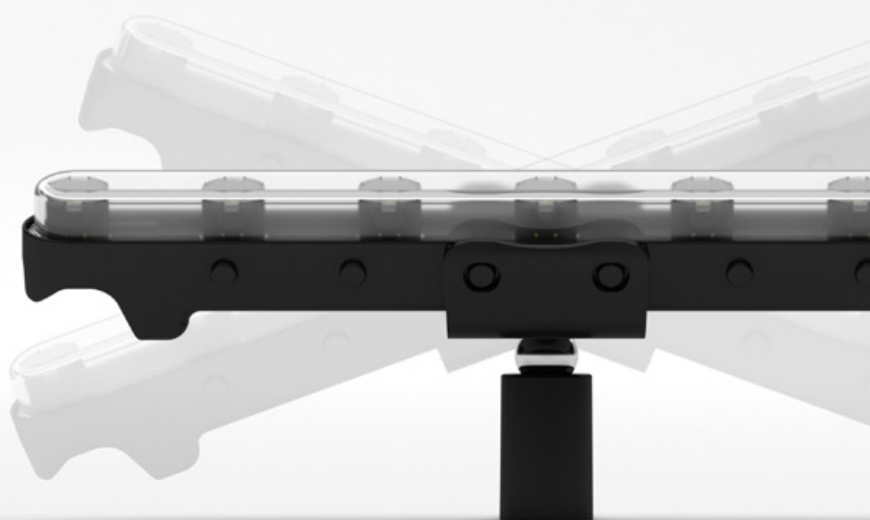


## CURVE RIGID STRIPS WITH EASE

Aduro CL is a modular chain LED fitting that has a flexible connection between each segment, enabling use along curved surfaces to create wall washing and grazing effects, while retaining efficacy and durability of rigid technology.

## MAGNETIC BALL CLIP

Aduro CL offers fine-tuned positioning in three axes, so light is directed exactly where it's needed. Pan, tilt and roll to precisely aim each module – it's effortless with the ball-and-socket mounting clip. The neodymium magnet keeps the individual position of each module firmly locked in place.



### LONG OPERATING LIFE

Coolon products use the world's most reputable LED manufacturers and the latest available standards to adequately report lumen maintenance. We strive to drive LEDs under their nominal current and use state-of-the-art heat dissipation methods, leading to durable electronics.



### VARIOUS CCT & COLOUR BINNING CONSISTENCY

All products are offered in various colour temperatures, and manufactured using tighter bins, ensuring excellent consistency and uniformity.



### 5 YEARS WARRANTY

Coolon luminaires are covered by a solid comprehensive manufacturer's warranty that covers a range of possible defects and performance parameters throughout the duration of the warranty period.



### PROUDLY MADE IN AUSTRALIA

Our products are designed and manufactured in Australia. Engineered to perfection, using only the highest quality components and highly skilled labour, each luminaire is assembled and thoroughly tested to ensure that it exceeds the highest standards.

## TECHNICAL SPECIFICATIONS

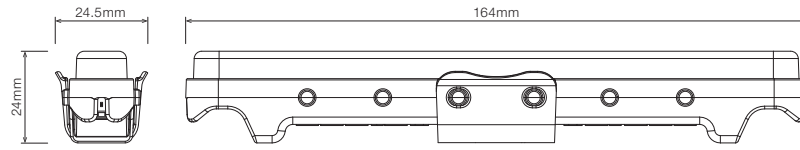
	7W VERSION	14W VERSION	
Product Code	STR-ADURO CL		
Description	Aduro CL Beam Control LED Strip		
Segment Length (S)	180mm		
LED Pitch	24.5mm		
LEDs Per Segment	7		
Operating Voltage	24VDC		
Typical Power Consumption per Segment	1.27W per 180mm Segment	2.54W per 180mm Segment	
Typical Power Consumption per Metre	7W per metre	14W per metre	
Typical Current	53mA per 180mm Segment	106mA per 180mm Segment	
Colour Rendering Index (CRI)	90+		
Dimmable	Through CTR-A2PWM 0-10V, CTR-DALILOGIC or CTR-DIMMERLOGIC (sold separately)		
Effective Beam Angle	Varies with optics (30° – 110°)		
External Heatsink Required	No		
Ambient Operating Temp	Ta -10°C to 50°C		
Thermal Operating	Yes (Active Thermal Management)		
Reported Lumen Maintenance TM21-11 (@ Ts = 85°C, If = 700mA)	L70 (17K) > 103,000 hours	L90 (17K) > 103,000 hours	
	Aduro CL max. operating values (@ Ts = 50°C, If = 106mA)		
IP Rating	IP20		
Approvals	CE, CB, RCM		
Max Continuous Connection Length	Please refer to installation limitations (Page 08)		
Luminous Flux per Metre (lm/M)	2700K	509 lm/Metre	1,017 lm/Metre
	3000K	586 lm/Metre	1,172 lm/Metre
	3500K	622 lm/Metre	1,243 lm/Metre
	4000K	657 lm/Metre	1,315 lm/Metre

- Specified values measured using O4018D optics
- Specific lumen output and IES files available on request

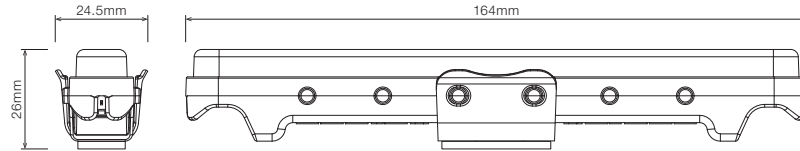
■ DIMENSIONS

For final strip lengths please refer to the "Product Length" table.

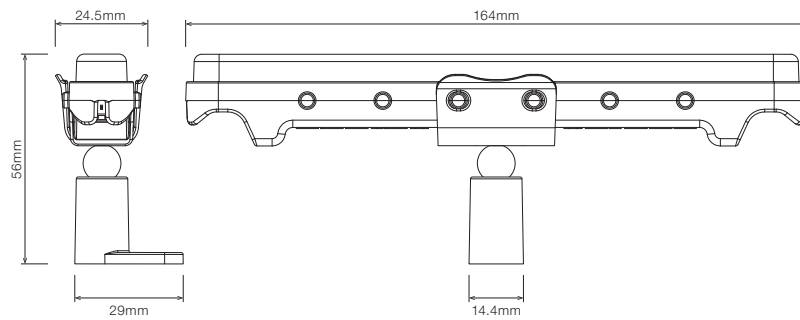
WITH MOUNTING CLIP



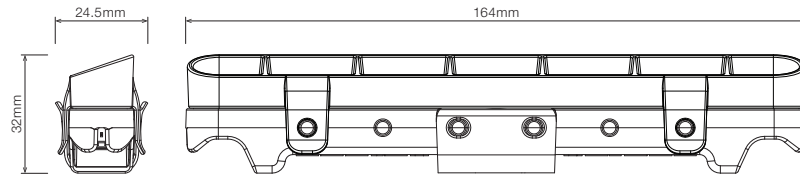
WITH MOUNTING TAPE



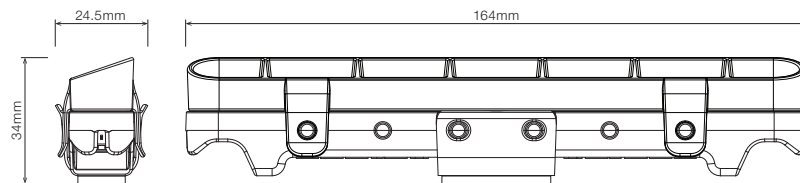
WITH MAGNETIC BALL CLIP



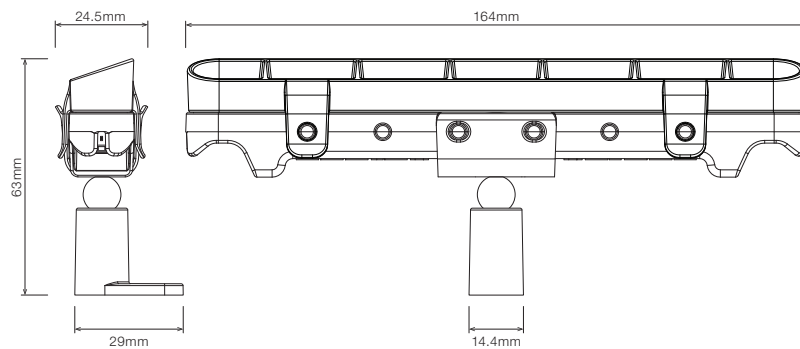
WITH MOUNTING CLIP AND GLARE SHIELD



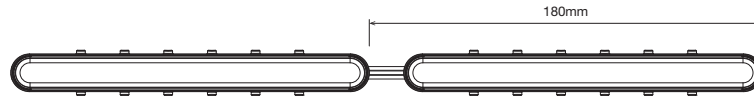
WITH MOUNTING TAPE AND GLARE SHIELD



WITH MAGNETIC BALL CLIP AND GLARE SHIELD



▪ PRODUCT LENGTH



POWERED BY 24VDC

# OF MODULES	FINAL LENGTH	# OF MODULES	FINAL LENGTH
S1	180mm	S17	3,060mm
S2	360mm	S18	3,240mm
S3	540mm	S19	3,420mm
S4	720mm	S20	3,600mm
S5	900mm	S21	3,780mm
S6	1,080mm	S22	3,960mm
S7	1,260mm	S23	4,140mm
S8	1,440mm	S24	4,320mm
S9	1,620mm	S25	4,500mm
S10	1,800mm	S26	4,680mm
S11	1,980mm	S27	4,860mm
S12	2,160mm	S28	5,040mm
S13	2,340mm	S29	5,220mm
S14	2,520mm	S30	5,400mm
S15	2,700mm	S31	5,580mm
S16	2,880mm		

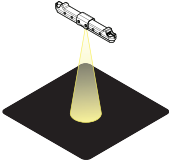
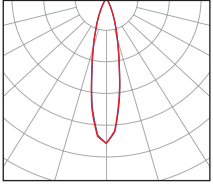
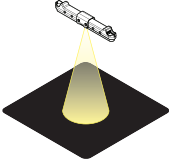
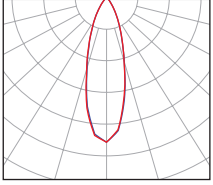
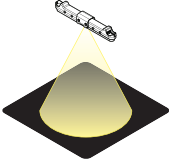
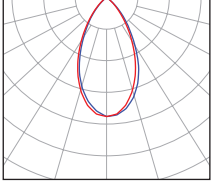
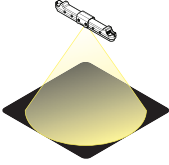
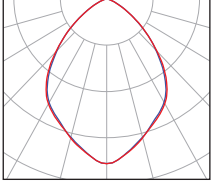
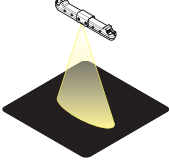
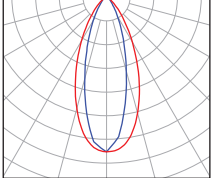
▪ **NOTE:** 14W version only available up to S16. 7W version available up to S31.

**⚠ WARNING**

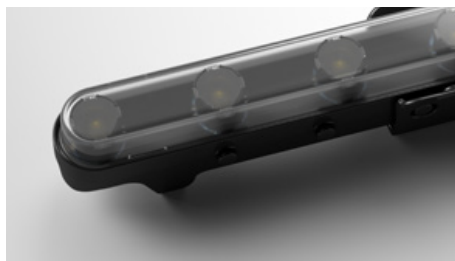
**PLEASE HANDLE LONG LED STRIPS WITH CARE.**

When handling LED Strips, please ensure that they are all supported and not dragged from one end.

■ POLAR DISTRIBUTION

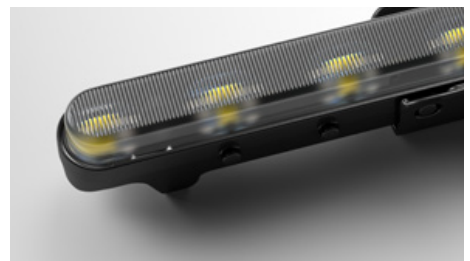
OPTIC	POLAR DISTRIBUTION	
<p>20D Narrow Beam 20° Beam Angle</p>		
<p>30D Medium Beam 30° Beam Angle</p>		
<p>50D Wide Beam 50° Beam Angle</p>		
<p>80D Wide Beam 80° Beam Angle</p>		
<p>O4018D Oval Beam Oval 40° x 18° Beam</p>		

■ OPTICS



**20D** • Narrow Beam  
**30D** • Medium Beam

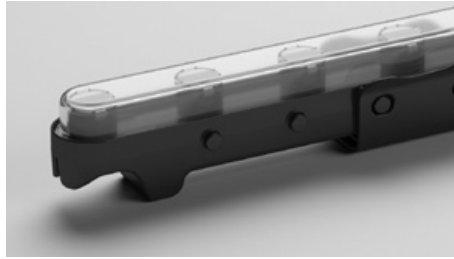
**50D** • Wide Beam  
**80D** • Wide Beam



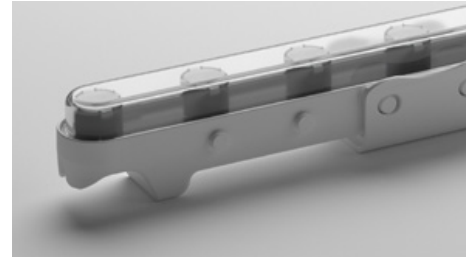
**O4018D** • Oval Beam

PROFILE COLOUR

**BLK** - Black (Standard)



**WHT** - White



WIRING CONFIGURATION

CONNECTOR TYPE	DRAWING	MALE	FEMALE
WR2.10S Wire 2+1 Core One Side			
SMPLC.1 Sample Type Connector 2.5mm			

- Standard Wiring Length 250mm.
- Please consult Coolon for details on extension cable between LED fittings, drivers and power supplies.

WIRING COLOUR CODE	
Red	+ VDC
Black	GND
White	PWM Control

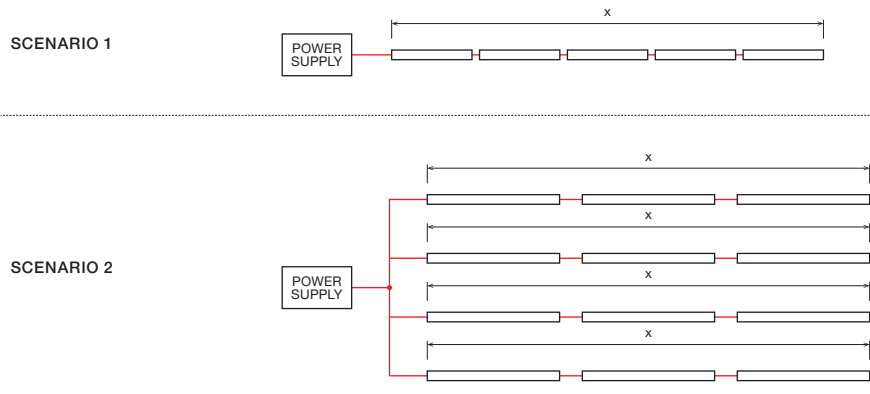
IP RATING

**IP20**

Protected against solid objects greater than 12mm.  
No Protection against liquids.



■ INSTALLATION LIMITS



7W VERSION

MAX. CONTINUOUS CONNECTION LENGTH (X)	CONNECTOR TYPE
5,600 mm	Quick connectors between modules

• Please consult Coolon for details on extension cable between LED fittings, drivers and power supplies.

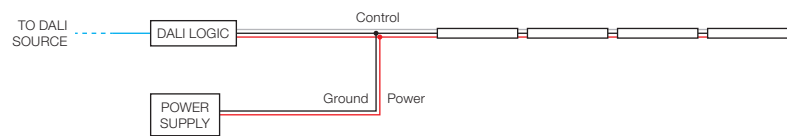
14W VERSION

MAX. CONTINUOUS CONNECTION LENGTH (X)	CONNECTOR TYPE
2,900 mm	Quick connectors between modules

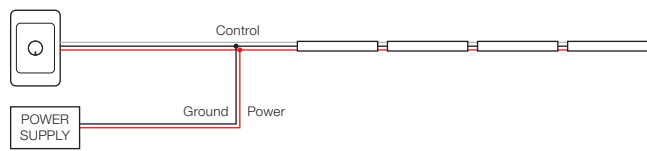
• Please consult Coolon for details on extension cable between LED fittings, drivers and power supplies.

■ WIRING DIAGRAMS

WITH DALI LOGIC



WITH DIMMER LOGIC



• Please consult Coolon for details on extension cable between LED fittings, drivers and power supplies.

**⚠ WARNING**

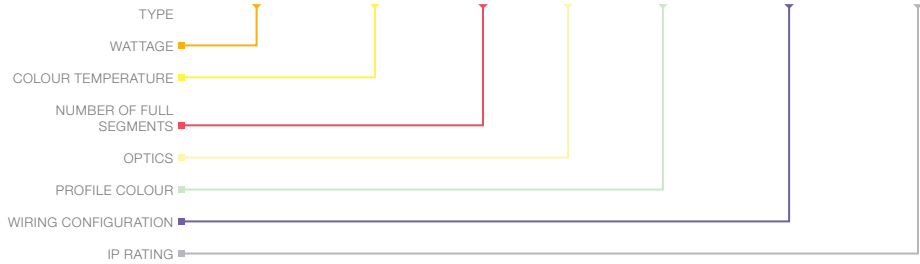
Avoid connecting multiple power supplies into a single circuit, unless they are specifically designed to do so.

✗

✗

ORDERING EXAMPLE

**STR - ADURO CL - 14W - 3.0KCRI - S1 - 50D - BLK - WR2.1OS - IP20**



■ **WATTAGE** PAGE 04

7W	7W per metre
14W	14W per metre

■ **COLOUR TEMPERATURE** <sup>1</sup> PAGE 04

2.7KCRI	2700K CRI 90
3.0KCRI	3000K CRI 90
3.5KCRI	3500K CRI 90
4.0KCRI	4000K CRI 90

■ **PRODUCT LENGTH** <sup>2</sup> PAGE 05

S1	180mm	S17	3,060mm
S2	360mm	S18	3,240mm
S3	540mm	S19	3,420mm
S4	720mm	S20	3,600mm
S5	900mm	S21	3,780mm
S6	1,080mm	S22	3,960mm
S7	1,260mm	S23	4,140mm
S8	1,440mm	S24	4,320mm
S9	1,620mm	S25	4,500mm
S10	1,800mm	S26	4,680mm
S11	1,980mm	S27	4,860mm
S12	2,160mm	S28	5,040mm
S13	2,340mm	S29	5,220mm
S14	2,520mm	S30	5,400mm
S15	2,700mm	S31	5,580mm
S16	2,880mm		

■ **OPTICS** PAGE 06

20D	20° Beam
30D	30° Beam
50D	50° Beam
80D	80° Beam
O4018D	Oval 40° x 18° Beam

■ **PROFILE COLOUR**

BLK	Black (Standard)
WHT	White

■ **WIRING CONFIGURATION** PAGE 07

WR2.1OS	Wire 2+1 Core One Side
SMPLC.1	Sample Type Connector 2.5mm


■ **IP RATING** PAGE 07

IP20	Indoor Use
------	------------

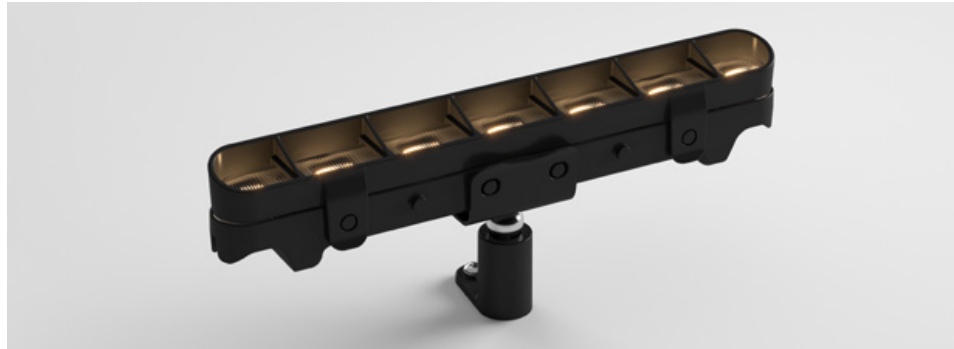
<sup>1</sup> Other CCT subject to availability.

<sup>2</sup> **14W** version only available up to S16. **7W** version available up to S31.

## ■ ACCESSORIES

	PRODUCT CODE	DESCRIPTION
<b>MOUNTING CLIP <sup>1</sup></b>		
	MC-STR-CC-BLK	Black Plastic Mounting Clip
	MC-STR-CC-WHT	White Plastic Mounting Clip
	MT-CC	Adhesive double sided mounting tape
	MC-STR-MBC-BLK	Magnetic Ball Clip Black
	MC-STR-MBC-WHT	Magnetic Ball Clip White
<sup>1</sup> One MC-STR-CC / MT-CC / MC-STR-MBC required per segment		
<b>ACCESSORIES</b>		
	ACC-ADUROCL-AGSB	Anti Glare Shield Black

### ACC-ADUROCL-AGSB · Anti Glare Shield Black



### CONTROLLER



CTR-A2PWM 0-10V	Analogue to PWM converter for 0 – 10V dimming signal
CTR-DIMMERLOGIC	Coolon Universal Wall Dimmer with 0 – 10V and PWM Logic Output
CTR-DALI-LOGIC	Indoor DALI Point 1 channel Driver with PWM Logic Output

### POWER SUPPLY



PWR-HLG-60H-24AU	Mean Well Power Supply HLG 60W 24V IP67
PWR-HLG-150H-24AU	Mean Well Power Supply HLG 150W 24V IP67
PWR-HLG-240H-24AU	Mean Well Power Supply HLG 240W 24V IP67
PWR-HLG-320H-24AU	Mean Well Power Supply HLG 320W 24V IP67

## ■ PHOTOGRAPHY

	LOCATION	LIGHTING PARTNER	PHOTOGRAPHER
Cover Photo	40 Miller Street	Jadecross	Huw Lambert <a href="https://www.huwlambert.com/">https://www.huwlambert.com/</a>