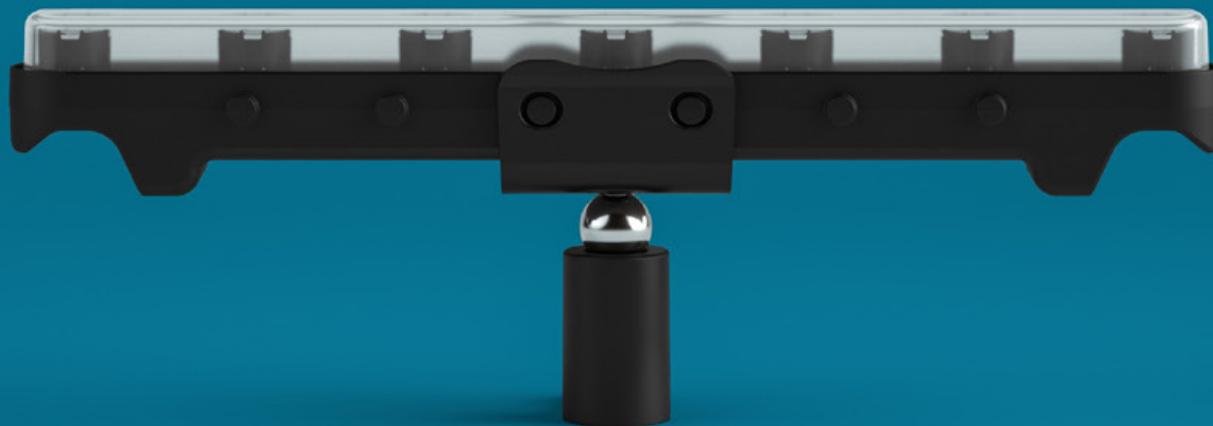


ADURO CL

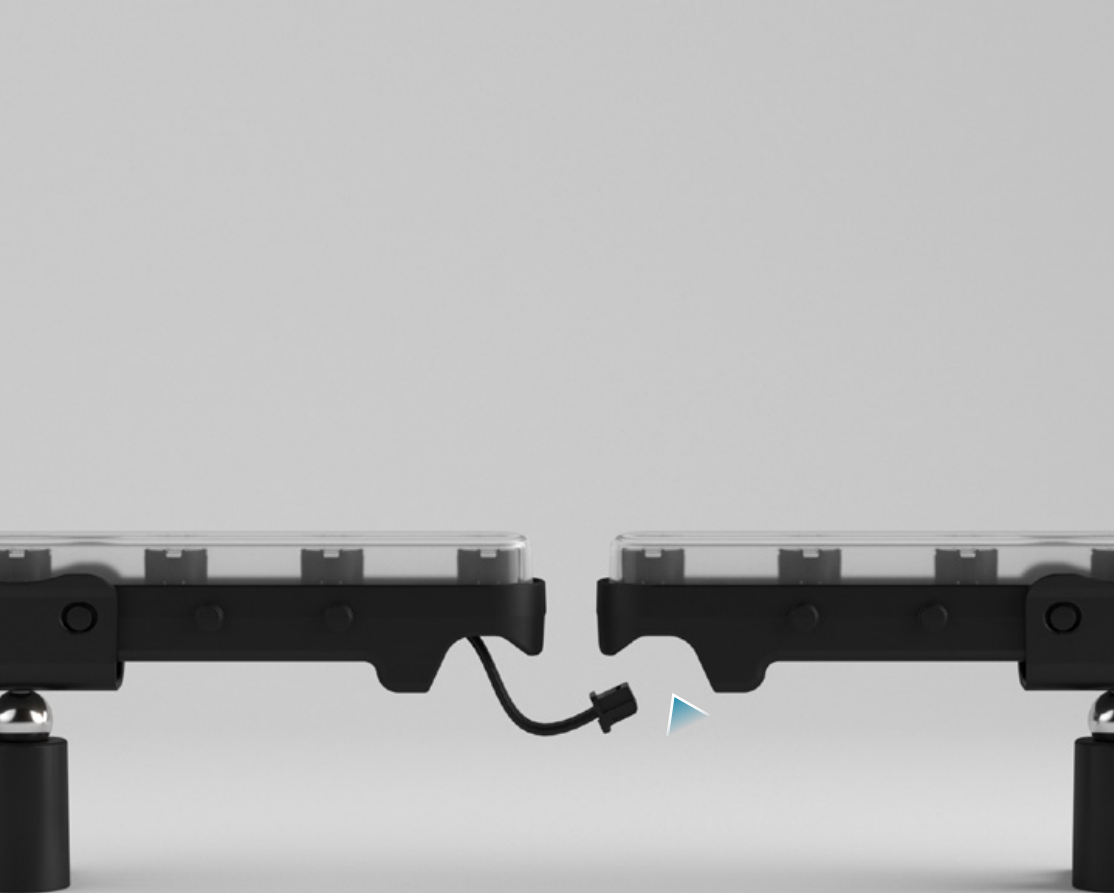




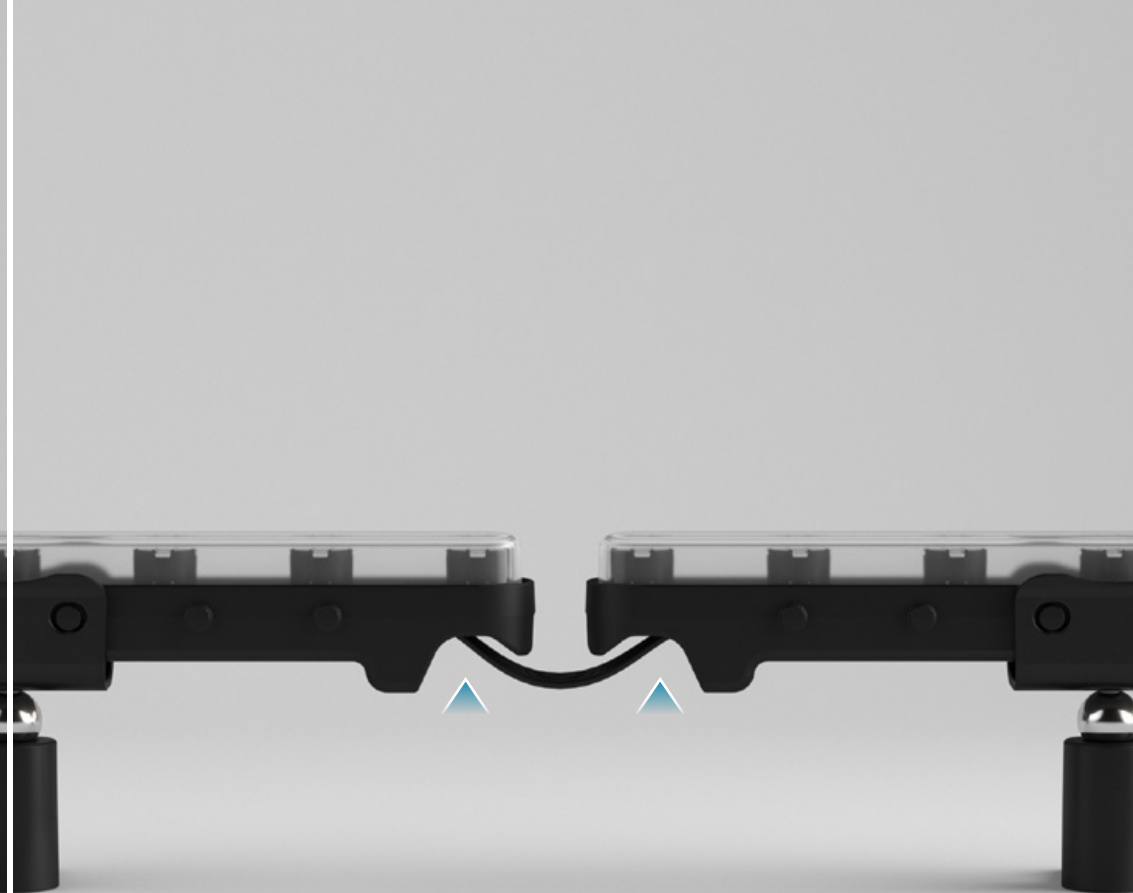
Coolon Aduro CL is a semi-rigid LED strip with optical control.



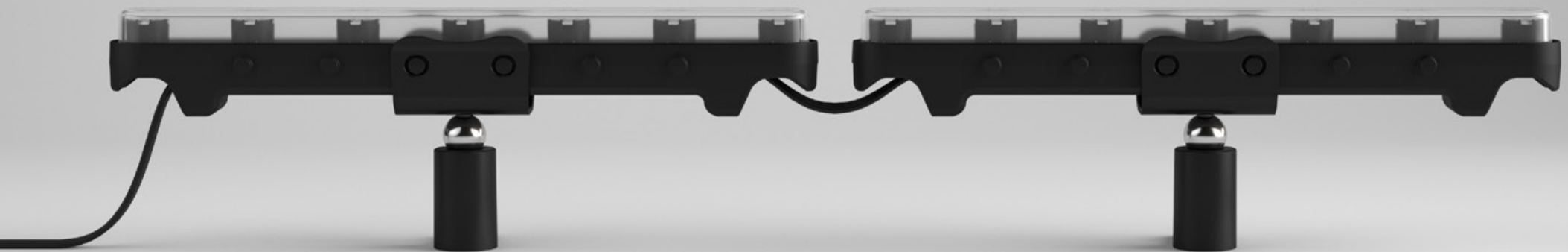
Aduro CL is used for grazing and lighting curved architecture.




Auro CL is equipped with a unique plug and play connector.



No need for a tool to connect or disconnect modules. Simply use your fingers.



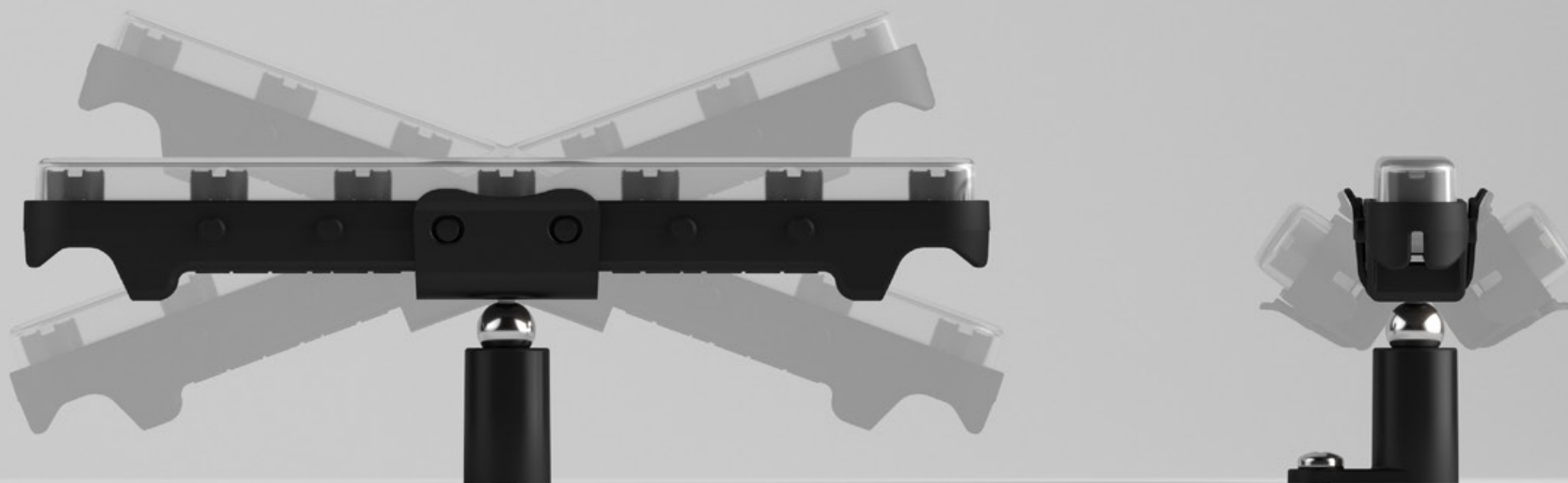


Connect 31 modules (7W/Metre system) or 16 modules (14W/Metre system) in a row.



The modules are 164mm in length and can be easily connected and aimed.

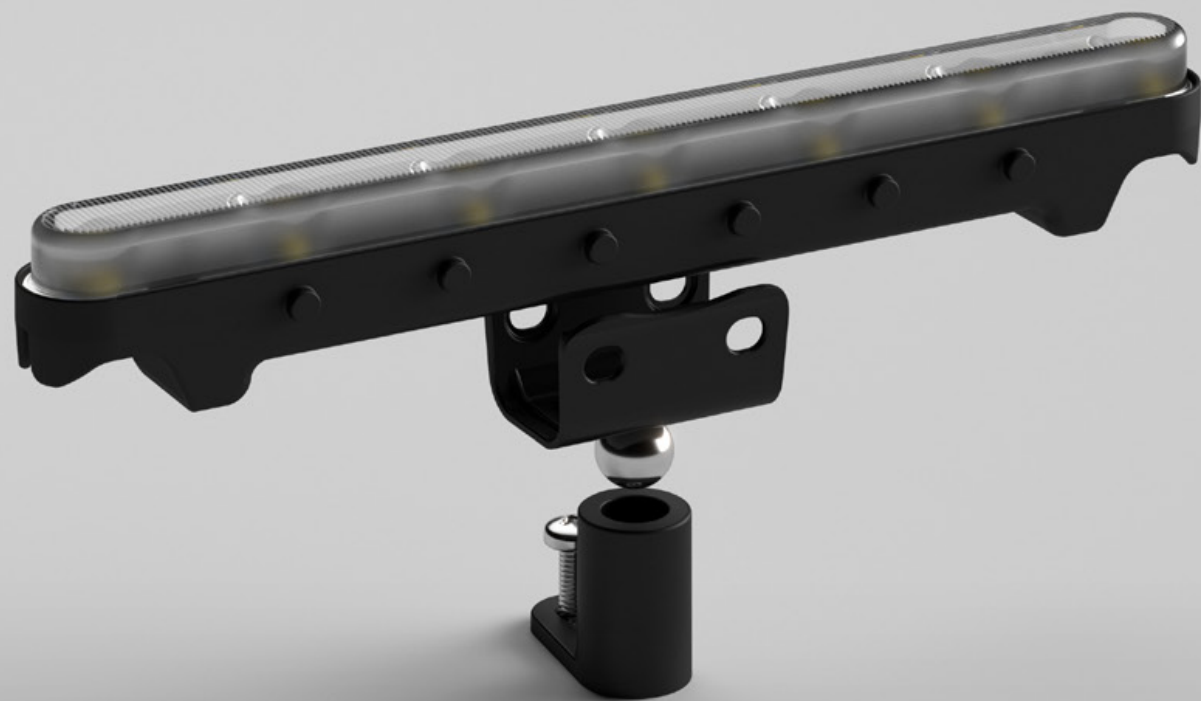




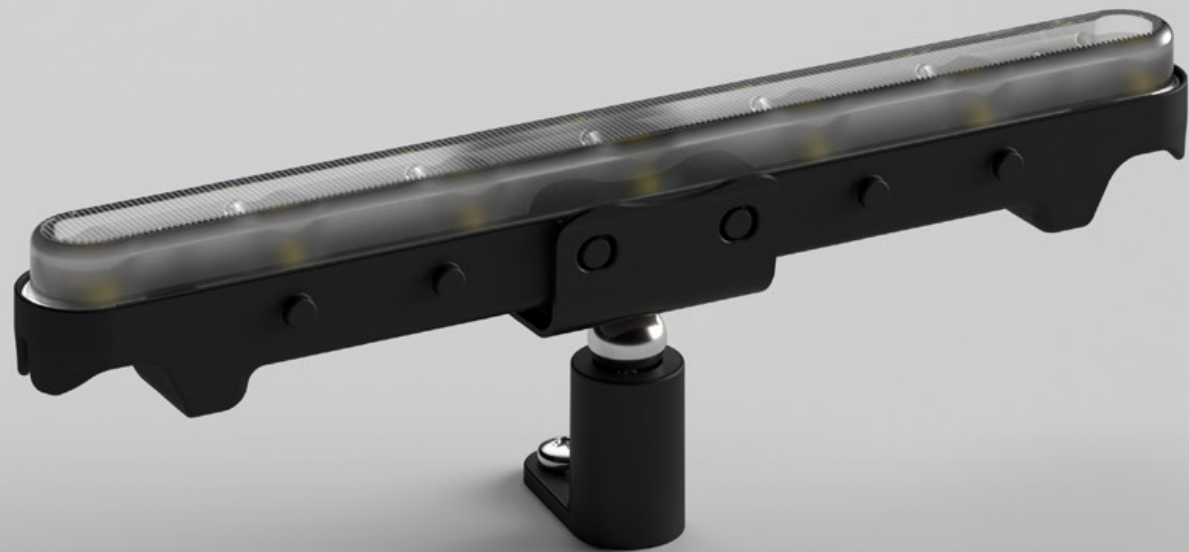
The magnetic ball joint allows for tool free aiming adjustments.



Each magnetic ball joint holds up to 3kg.

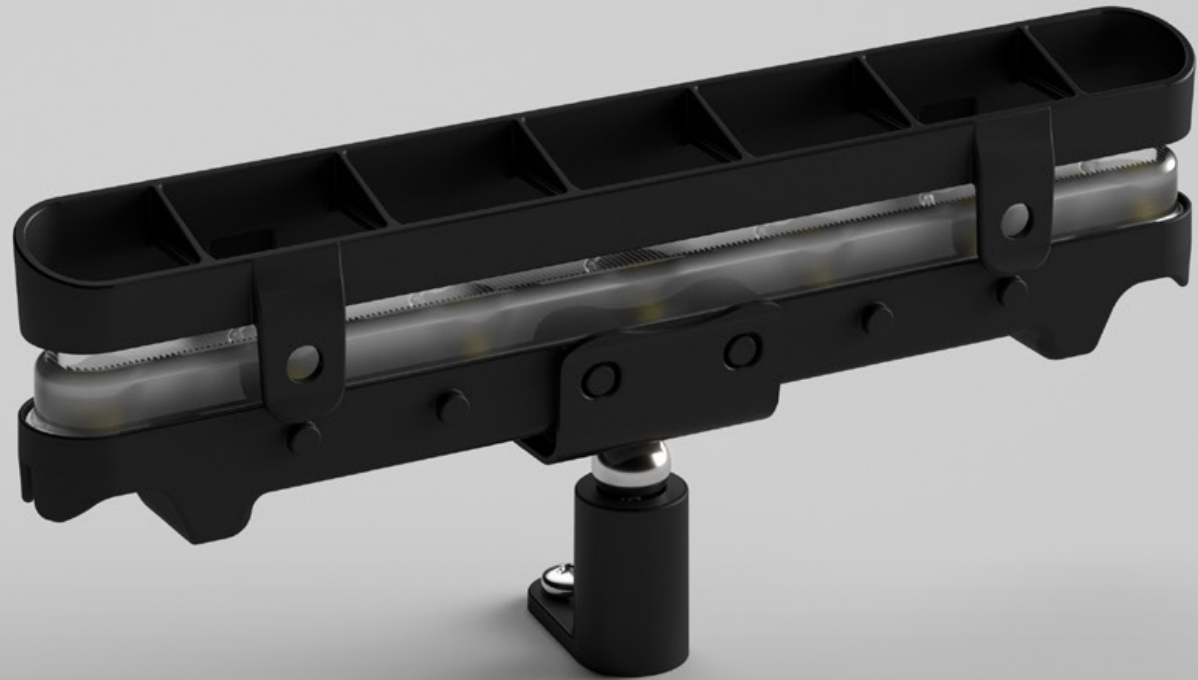


The luminaire simply clicks into the magnetic ball joint socket.

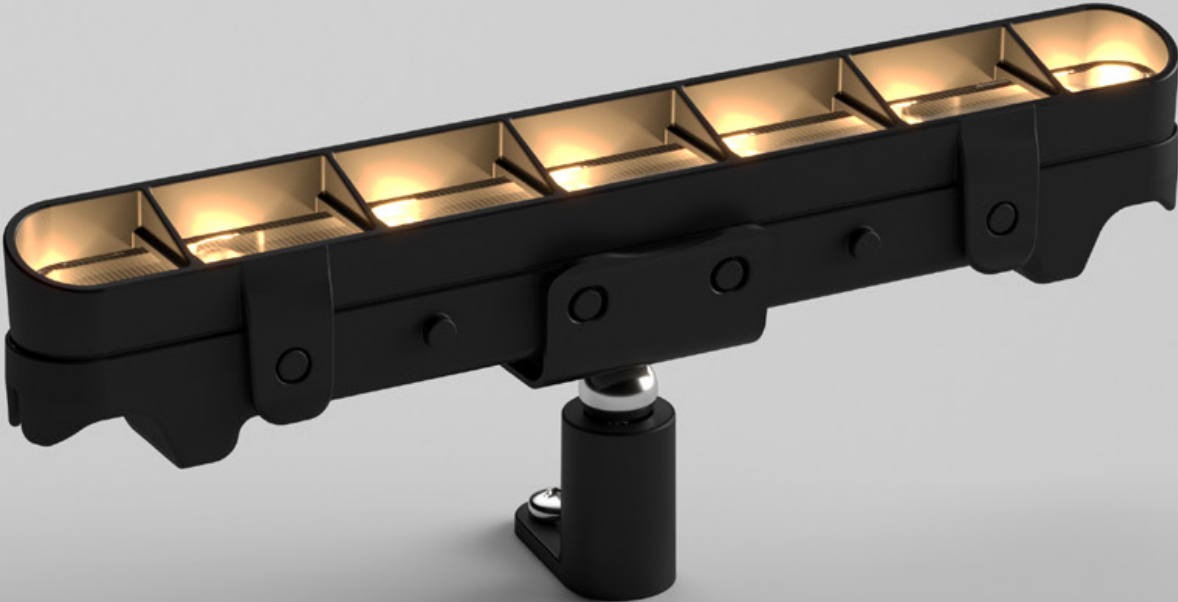


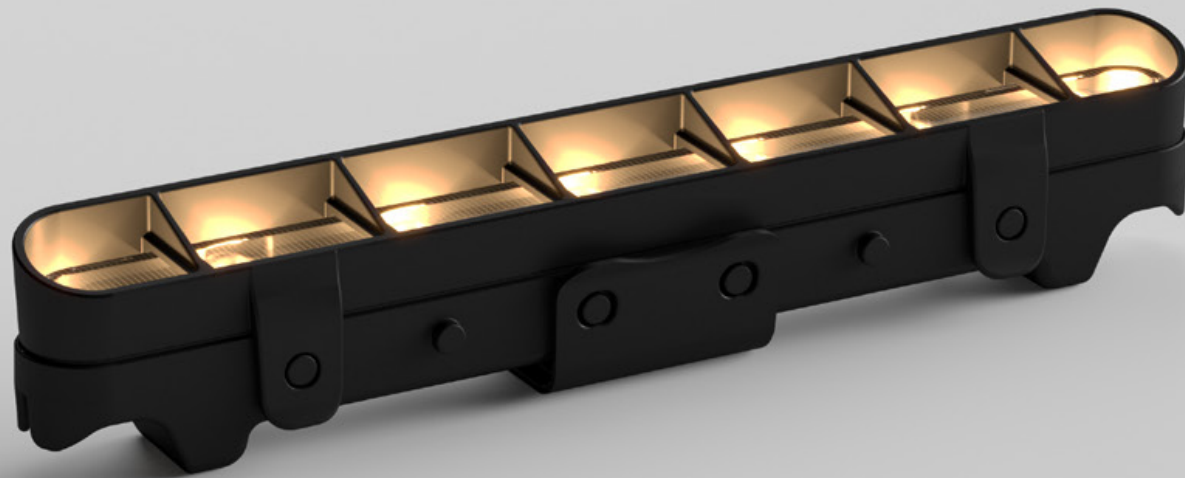


Glare control accessory is available.



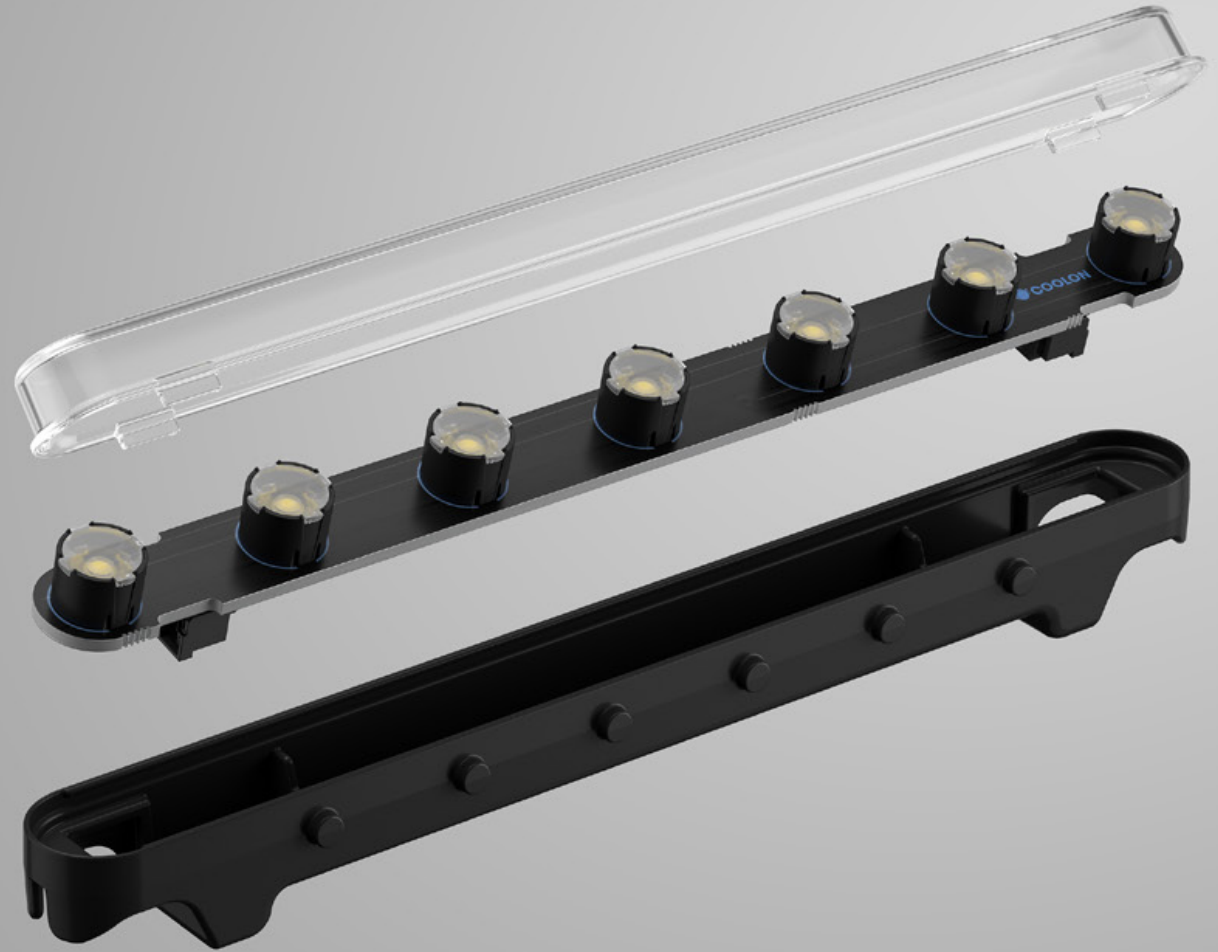
Glare control accessory simply clicks into position.





Surface mount accessory is available.

Opportunity for refurbishment
with a new light engine at end
of operational life.



8 ROBINSON





7W and 14W per
metre options



4 colour temperature
options available



Black and white
body options



Multi award
winner



Take $\frac{1}{4}$ of the time to
install compared to
conventional systems



Short Leadtime of
2 – 3 weeks



Lightweight design
allows for airfreight



Reuse and refurbish
at end of life



WATTAGE

7W and 14W per metre

OUTPUT

600lm – 1200lm per metre

CCT

2700K, 3000K, 3500K, 4000K

OPTICS

20D, 30D, 50D, 80D, Oval 40x18D

OPTICS

Black or White

	7W VERSION	14W VERSION
Product Code	STR-ADURO CL 7W	STR-ADURO CL 14W
Description	Beam Control LED Strip	
Segment Length (S)	180mm	
LED Pitch	24,5mm	
LEDs Per Segment	7	
Operating Voltage	24VDC	24VDC
Typical Power Consumption per Segment	1.27W per Segment	2.54W per Segment
Typical Power Consumption per Metre	7W per metre	14W per metre
Typical Current	53mA per Segment	106mA per Segment
Colour Rendering Index (CRI)	90+	
Dimmable	Through CTR-A2PWM 0-10V, CTR-DALILOGIC or CTR-DIMMERLOGIC (sold separately)	
Effective Beam Angle	Varies with optics (30° – 110°)	
External Heatsink Required	No	
Ambient Operating Temp	Ta -10°C to 50°C	
Thermal Operating	Yes (Active Thermal Management)	
Reported Lumen Maintenance TM21-11 (@ Ts = 85°C, If = 700mA)	L70 (17K) > 103,000 hours L90 (17K) > 103,000 hours	
	Aduro CL max. operating values (@ Ts = 50°C, If = 106mA)	
IP Rating	IP20	
Approvals	CE, CB, RCM	
Max Continuous Connection Length	5.60m or 31 Segments	2.90m or 16 Segments
Luminous Flux per Metre (lm/M)	509 – 657 lm/Metre	1,017 – 1,315 lm/Metre

- Specified values measured using O4018D optics
- Specific lumen output and IES files available on request

12 – 14 Austral Place, Hallam VIC 3803, Australia

PHONE

1300 287 533
+613 8681 3633

EMAIL

archsales@coolon.com.au

WEBSITE

www.coolon.com.au

24.05

All documentation is subject to change without notice. Refer to our website for the latest information.



JOIN US



Search: Coolon LED Lighting