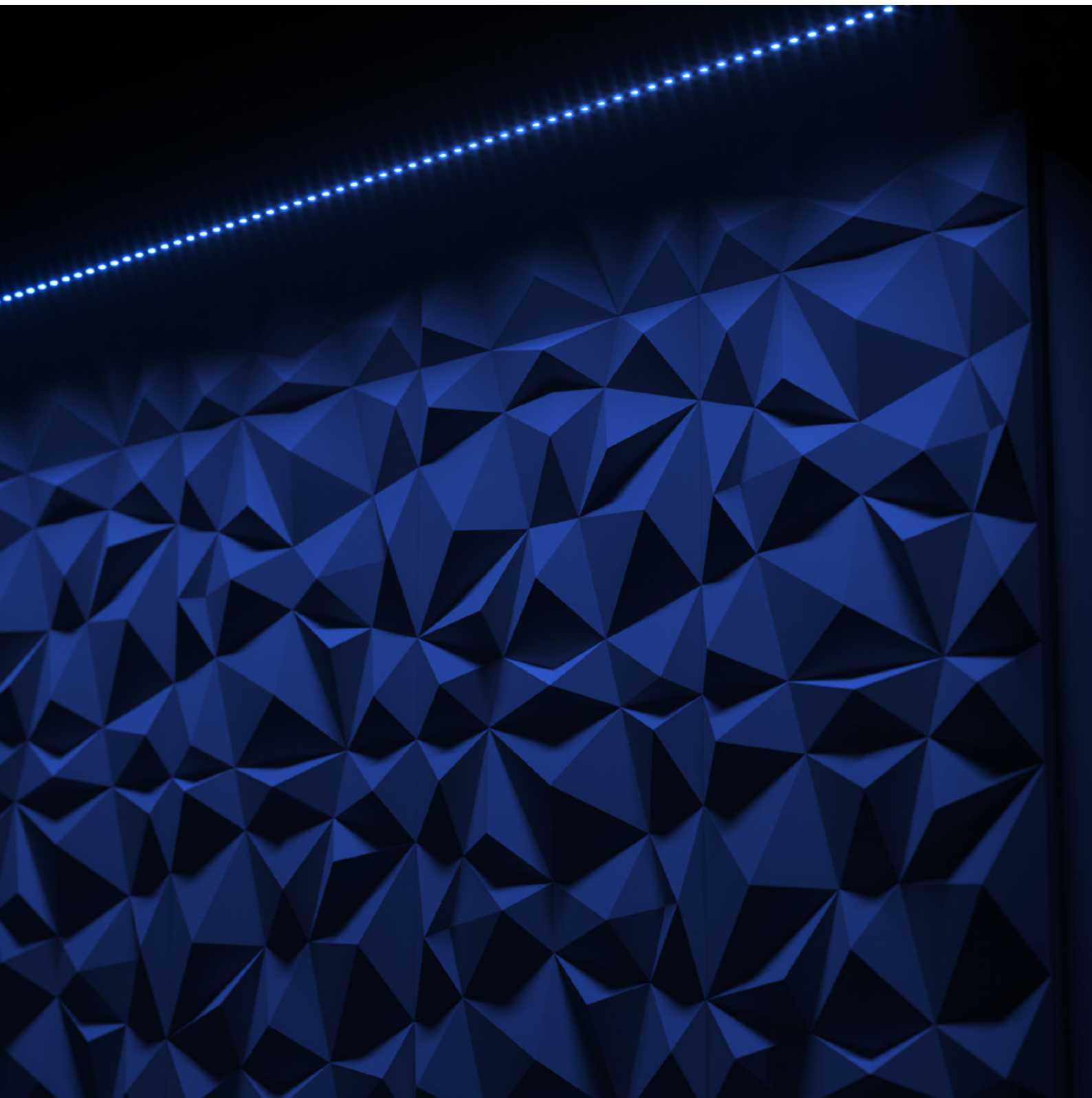
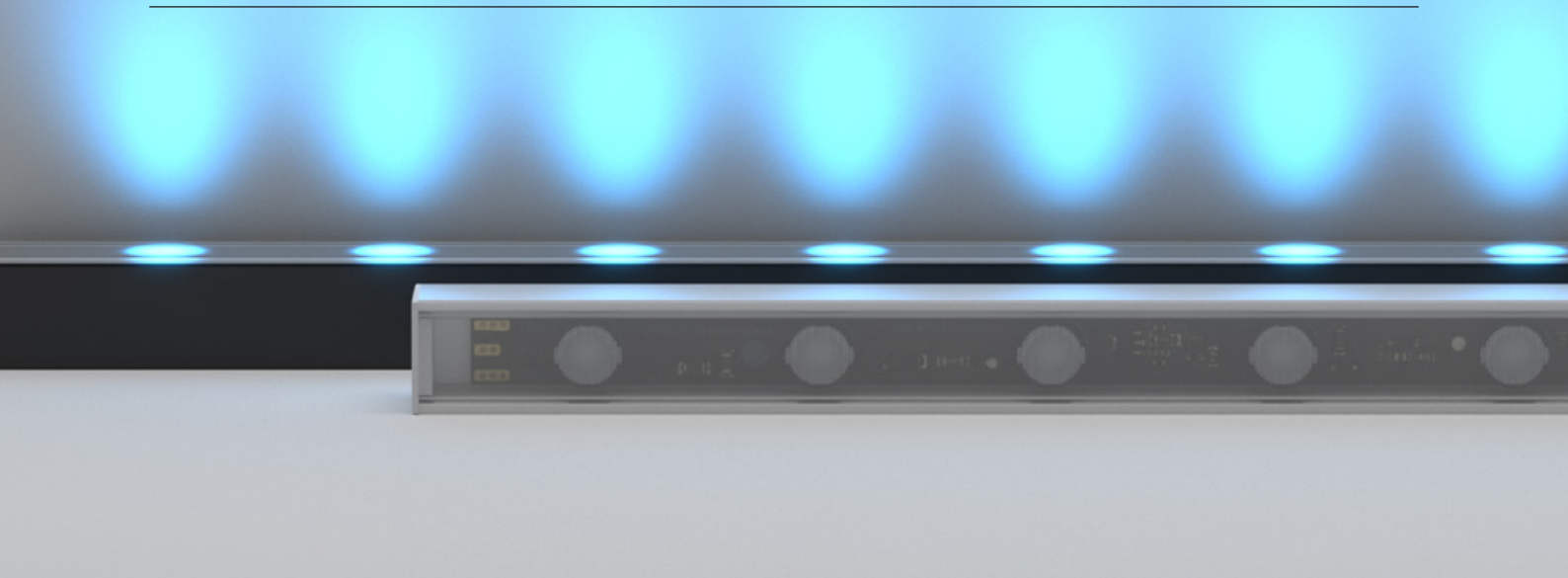




ADURO X2 C

LED STRIP STR-ADURO X2 C





Aduro X2 C is a compact strip luminaire with precision optics - available in a range of vibrant, static colours. Aduro X2 C provides pure colour without the need for external control, for maximum efficacy and high impact.

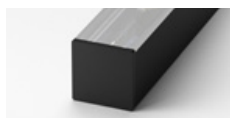
With a diminutive 17x17mm profile, this luminaire is offered in two wattages (11W and 23W) and various lengths.

POWER

LUMINOUS FLUX

11W

11W / metre



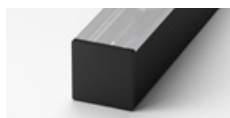
P17D2 · Varies with colour



PR17D2 · Varies with colour

23W

23W / metre



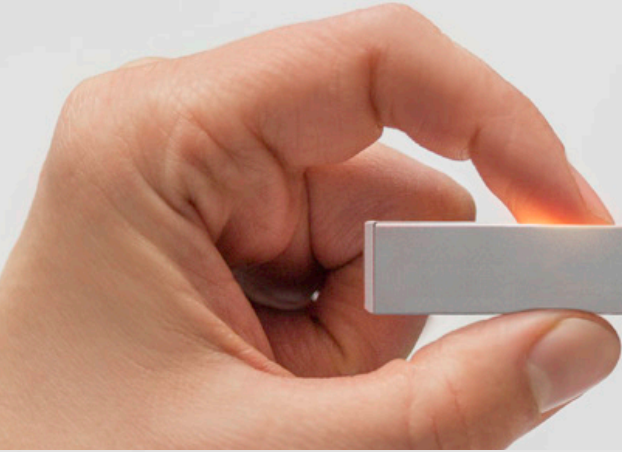
P17D2 · Varies with colour



PR17D2 · Varies with colour

COLOURS



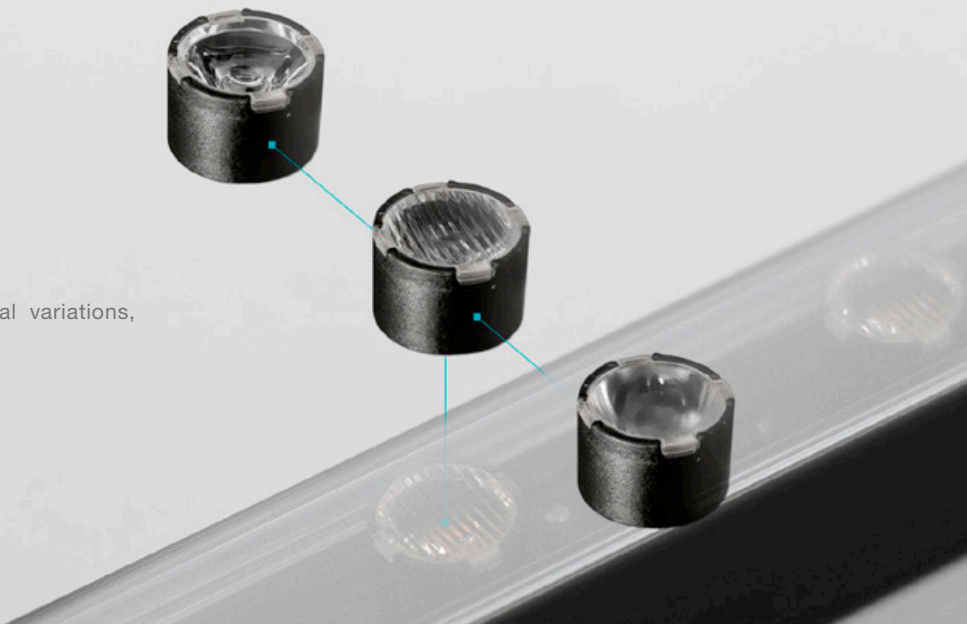


COMPACT SIZE

Reduced form factor can provide freedom and simplicity to a designer. At only 17x17mm, Aduro X2 C is our smallest LED strip offered with optical control.

SLIMLINE OPTICS

Aduro X2 C is offered in a range of optical variations, providing precision in each application.



LONG OPERATING LIFE

Coolon products use the world's most reputable LED manufacturers and the latest available standards to adequately report lumen maintenance. We strive to drive LEDs under their nominal current and use state-of-the-art heat dissipation methods, leading to durable electronics.



5 YEARS WARRANTY

Coolon luminaires are covered by a solid comprehensive manufacturer's warranty that covers a range of possible defects and performance parameters throughout the duration of the warranty period.



PROUDLY MADE IN AUSTRALIA

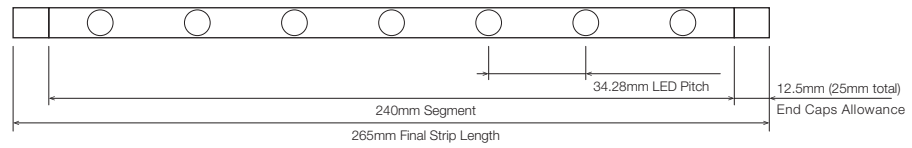
Our products are designed and manufactured in Australia. Engineered to perfection, using only the highest quality components and highly skilled labour, each luminaire is assembled and thoroughly tested to ensure that it exceeds the highest standards.

TECHNICAL SPECIFICATIONS

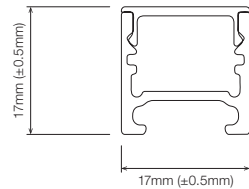
	BLUE	GREEN	RED	AMBER
Product Code	STR-Aduro X2 C			
Description	Aduro X2 Beam Control LED Strip			
Segment Length (S)	240mm			
Segment Width	10.50mm			
LED Pitch	34.28mm			
LEDs Per Segment	7			
Operating Voltage	24VDC			
Dimmable	Through CTR-DALILOGIC or CTR-DIMMERLOGIC (sold separately)			
Effective Beam Angle	Varies with optics			
External Heatsink Required	No			
Ambient Operating Temp	Ta -10°C to 50°C			
Thermal Operating	Yes (Active)			
Reported Lumen Maintenance	L70 (17K) > 103,000 hours			
TM21-11 (@ Ts = 85°C, If = 700mA)	L90 (17K) > 103,000 hours			
	Aduro X2 C max. operating values (@ Ts = 40°C, If = 230mA)			
IP Rating	IP40			
Max Continuous Connection Length	Please refer to installation limitations (Page 09)			

DIMENSIONS

For final strip lengths please refer to the "Product Length" table.



P17 PROFILE



AVAILABLE IN

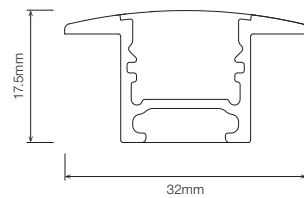
Diffused



MOUNTING OPTIONS

- **MC-STR-SMCLIP**
Pivot Surface Mounting Clip
- **MC-XCLIP**
Flat Mount X-Clip
- **MC-STR-RBCLIP**
Rebate Mounting Clip
- **MBR-RB-TA-P17**
Rotating Bracket,
TYPE A Rotating Clip
- **MBR-RB-TB-P17**
Rotating Bracket,
TYPE B Rotating Clip

PR17 RECESSED PROFILE



AVAILABLE IN

Diffused



MOUNTING OPTIONS

- **MC-STR-SMCLIP**
Pivot Surface Mounting Clip
- **MC-XCLIP**
Flat Mount X-Clip
- **MC-STR-PR17**
Spring Mounting Clip

¹ MC-XCLIP only available for IP40 rated fittings.



Click on the download icon to view more information regarding mounting and rebate suggestions.

▪ PRODUCT LENGTH WITH P17

FULL SEGMENTS	EXACT STRIP LENGTH	P17 END CAP ALLOWANCE	P17 FINAL LENGTH
S1	240mm	add 25mm	265mm
S2	480mm	add 25mm	505mm
S3	720mm	add 25mm	745mm
S4	960mm	add 25mm	985mm
S5	1,200mm	add 25mm	1,225mm
S6	1,440mm	add 25mm	1,465mm
S7	1,680mm	add 25mm	1,705mm
S8	1,920mm	add 25mm	1,945mm *
S9	2,160mm	add 25mm	2,185mm *
S10	2,400mm	add 25mm	2,425mm *
S11	2,640mm	add 25mm	2,665mm *
S12	2,880mm	add 25mm	2,905mm *
S13	3,120mm	add 25mm	3,145mm *
S14	3,360mm	add 25mm	3,385mm *

Confirm interstate courier compliance

▪ Custom length subject to availability

▪ PRODUCT LENGTH WITH PR17

FULL SEGMENTS	EXACT STRIP LENGTH	PR17 END CAP ALLOWANCE	PR17 FINAL LENGTH
RS1	240mm	add 40mm	280mm
RS2	480mm	add 40mm	520mm
RS3	720mm	add 40mm	760mm
RS4	960mm	add 40mm	1,000mm
RS5	1,200mm	add 40mm	1,240mm
RS6	1,440mm	add 40mm	1,480mm
RS7	1,680mm	add 40mm	1,720mm
RS8	1,920mm	add 40mm	1,960mm
RS9	2,160mm	add 40mm	2,200mm
RS10	2,400mm	add 40mm	2,440mm
RS11	2,640mm	add 40mm	2,680mm

Confirm interstate courier compliance

⚠ WARNING

Do not bend LED strip when removing from mounting clips.

Gently twist LED Strip to remove from mounting clips.

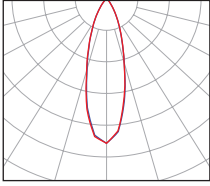
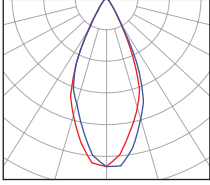
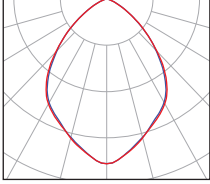
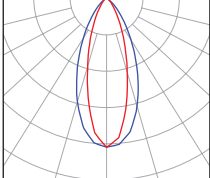
⚠ WARNING

PLEASE HANDLE LONG LED STRIPS WITH CARE.

LED Strips must not be bent.

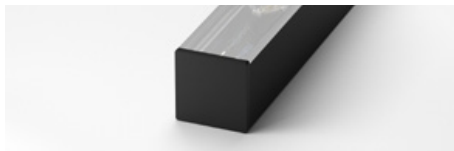
When handling LED Strips, please ensure that they are kept straight.

■ POLAR DISTRIBUTION

OPTIC	POLAR DISTRIBUTION
<p>30D Medium Beam 30° Beam Angle</p>	
<p>50D Wide Beam 50° Beam Angle</p>	
<p>80D Wide Beam 80° Beam Angle</p>	
<p>O4018D Oval Beam Oval 40° x 18° Beam</p>	

■ PROFILE / DIFFUSER

P17D2 - P17 Profile Diffused



PR17D2 - PR17 Profile Recessed Diffused



■ PROFILE COLOUR

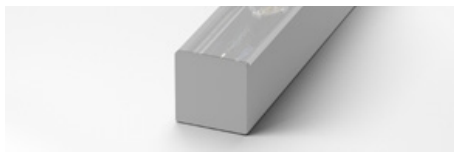
BLK - Black (Standard)



WHT - White



GRY - Grey



CST - Custom Colour ¹



¹ Custom colours available on request.

WIRING CONFIGURATION

CONNECTOR TYPE	DRAWING	MALE	FEMALE
WR2.1OS Wire 2+1 Core One Side			
WR2.1BS Wire 2+1 Core Both Sides			
OC2.1MO Connector 2+1 pin Male Only			
OC2.1MF Connector 2+1 pin Male + Female			
SMPLC.1 Sample Type Connector 2.5mm			

- For detailed information on Outdoor IP67 connector please contact Coolon.
- Please consult Coolon for details on extension cable between LED fittings, drivers and power supplies.

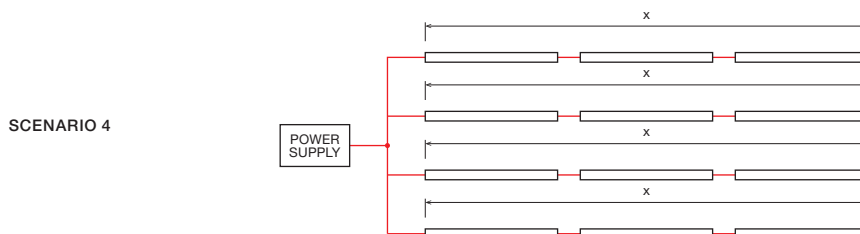
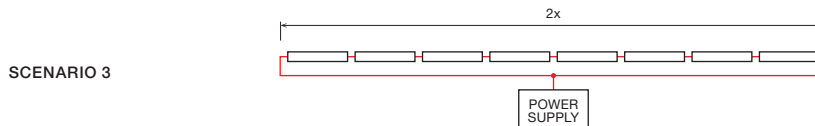
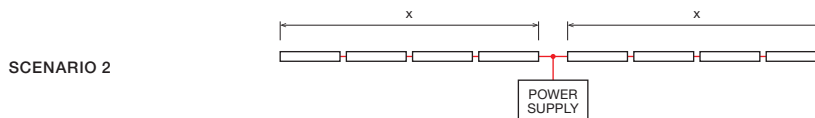
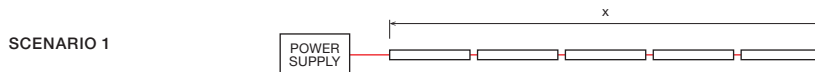
WIRING COLOUR CODE	
Red	+ VDC
Black	GND
White	PWM Control

IP RATING

IP40

Protected against solid objects greater than 1mm. No protection against liquids.

■ INSTALLATION LIMITS



11W VERSION

MAX. CONTINUOUS CONNECTION LENGTH (X)	CONNECTOR TYPE
12,200 mm	With 2+1 core (WR2.1OS / WR2.1BS)
5,500 mm	With 2+1 pin connectors (OC2.1MO / OC2.1MF / SMPLC.1)

■ Please consult Coolon for details on extension cable between LED fittings, drivers and power supplies.

23W VERSION

MAX. CONTINUOUS CONNECTION LENGTH (X)	CONNECTOR TYPE
5,800 mm	With 2+1 core (WR2.1OS / WR2.1BS)
2,500 mm	With 2+1 pin connectors (OC2.1MO / OC2.1MF / SMPLC.1)

■ Please consult Coolon for details on extension cable between LED fittings, drivers and power supplies.

⚠ WARNING

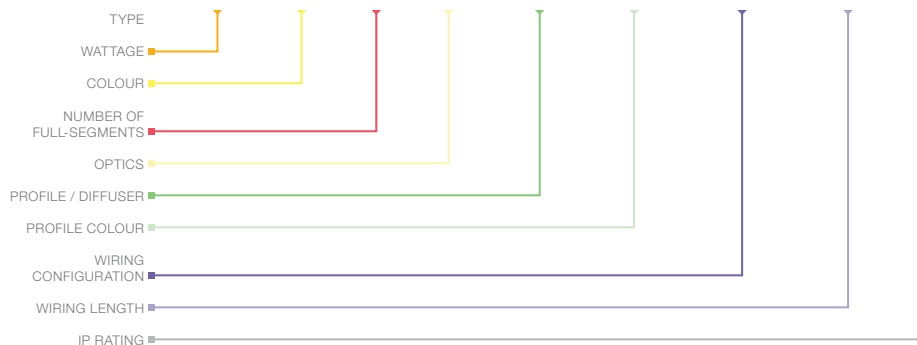
Avoid connecting multiple power supplies into a single circuit, unless they are specifically designed to do so.

✗

✗

ORDERING EXAMPLE

STR - ADURO X2 C - 23W - BLU - S2 - 50D - P17D2 - BLK - WR2.1BS - 100 - IP40



WATTAGE

11W	10.5W per metre
23W	23W per metre

COLOUR

BLU	Blue
GRN	Green
RED	Red
AMB	Amber

PRODUCT LENGTH

P17	
S1	265mm
S2	505mm
S3	745mm
S4	985mm
S5	1,225mm
S6	1,465mm
S7	1,705mm
S8	1,945mm
S9	2,185mm
S10	2,425mm
S11	2,665mm
S12	2,905mm
S13	3,145mm
S14	3,385mm
PR17	
RS1	280mm
RS2	520mm
RS3	760mm
RS4	1,000mm
RS5	1,240mm
RS6	1,480mm
RS7	1,720mm
RS8	1,960mm
RS9	2,200mm
RS10	2,440mm
RS11	2,680mm

OPTICS

30D	30° Beam
50D	50° Beam
80D	80° Beam
O4018D	Oval 40° x 18° Beam

PROFILE / DIFFUSER

P17D2	P17 Profile Diffused
PR17D2	PR17 Recessed Profile Diffused

PROFILE COLOUR

BLK	Black (Standard)
WHT	White
GRY	Grey
CST	Custom Colour

WIRING CONFIGURATION

WR2.1OS	Wire 2+1 Core One Side
WR2.1BS	Wire 2+1 Core Both Sides
OC2.1MO	Connector 2+1 pin Male Only
OC2.1MF	Connector 2+1 pin Male + Female
SMPLC.1	Sample Type Connector 2.5mm

WIRING LENGTH

100	100mm
250	250mm
500	500mm
1000	1000mm

IP RATING

IP40	Indoor Use
------	------------

¹ Custom colours available on request.

■ ACCESSORIES

	PRODUCT CODE	DESCRIPTION
MOUNTING CLIP ¹		
	MC-XCLIP	Flat Mount X-Clip
	MC-STR-RBCLIP	Rebate Mounting Clip
	MC-STR-SMCLIP	Pivot Surface Mounting Clip
	MBR-RB-TA-P17-BLK	Rotating Bracket, TYPE A Rotating Clip - Black
	MBR-RB-TB-P17-BLK	Rotating Bracket, TYPE B Rotating Clip - Black
	MC-STR-PR1732	Spring Mounting Clip for PR17 Recessed Profile
¹ Recommended spacing for Mounting Clips is maximum 500mm.		
CONTROLLER		
	CTR-A2PWM 0-10V	Analogue to PWM converter for 0 – 10V dimming signal
	CTR-DIMMERLOGIC	Coolon Universal Wall Dimmer with 0 – 10V and PWM Logic Output
	CTR-DALI-LOGIC	Indoor DALI Point 1 channel Driver with PWM Logic Output
	CTR-DALILOGIC-IP	Outdoor DALI Point 1 channel Driver with PWM Logic Output
POWER SUPPLY		
	PWR-HLG-60H-24AU	Mean Well Power Supply HLG 60W 24V IP67
	PWR-HLG-150H-24AU	Mean Well Power Supply HLG 150W 24V IP67
	PWR-HLG-240H-24AU	Mean Well Power Supply HLG 240W 24V IP67
	PWR-HLG-320H-24AU	Mean Well Power Supply HLG 320W 24V IP67
CABLE EXTENSIONS		
	CBLEXT-STR-WR2.1-IP40-3M	3m Cable Extension for Strips Red, Black and White, 0.75mm ² wire
	CBLEXT-STR-WR2.1-IP40-5M	5m Cable Extension for Strips Red, Black and White, 0.75mm ² wire
	CBLEXT-STR-OC2.1-IP65-3M	3m Connector Extension for Strips 1x Red, 1x Black, 1x White, 0.75mm ² wires
	CBLEXT-STR-OC2.1-IP65-5M	5m Connector Extension for Strips 1x Red, 1x Black, 1x White, 0.75mm ² wires