



MAYA UG

LED STRIP STR-MAYA UG





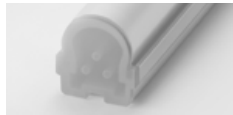
Maya UG is a LED luminaire perfected for projects that prioritise high-quality illumination, design versatility, and ease of use. With a high CRI dot-free glow, a broad selection of CCTs, profiles, and length options, Maya UG delivers exceptional visual comfort while offering extensive customisation options.

Available in 9W and 18W, it features uniform glow diffusers that eliminate visible LED hotspots or scalloping, ensuring a smooth, uninterrupted light distribution. Maya UG excels in delivering premium light quality and adaptability, making it an ideal choice for applications where aesthetic precision and variety are key.

POWER

LUMINOUS FLUX

9W
9W / metre



RD · 746 lm / metre



P17D · 750 lm / metre



PR17D · 750 lm / metre



P17B · 73 lm / metre

18W
17.3W / metre



RD · 1,386 lm / metre



P17D · 1,440 lm / metre

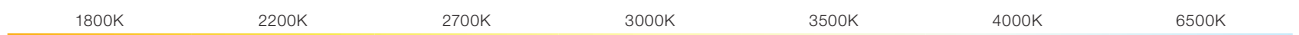


PR17D · 1,440 lm / metre



P17B · 137 lm / metre

COLOUR TEMPERATURE



PERFECTED PERFORMANCE

HIGH-QUALITY ILLUMINATION, DESIGN VERSATILITY, AND EASE OF USE

Maya UG is a versatile LED luminaire designed for high-quality illumination, flexibility, and ease of use. With a high CRI, a seamless, dot-free glow, and ample variety of colours and profiles, it delivers exceptional visual comfort while ensuring design freedom. Ideal for projects that prioritise aesthetics and adaptability.

HIGHLY VERSATILE LENGTH OPTIONS

Highly versatile length options allow the user to achieve accurate and adaptable lengths. Maya UG can achieve any desired length in 37.5mm increments.



LONG OPERATING LIFE

Coolon products use the world's most reputable LED manufacturers and the latest available standards to adequately report lumen maintenance. We strive to drive LEDs under their nominal current and use state-of-the-art heat dissipation methods, leading to durable electronics.



HIGH-QUALITY COLOUR RENDERING & CONSISTENCY

Offered in CRI 90+ for astonishing colour rendering. Tight binning ensures excellent product consistency and uniformity.



5 YEARS WARRANTY

Coolon luminaires are covered by a solid comprehensive manufacturer's warranty that covers a range of possible defects and performance parameters throughout the duration of the warranty period.



PROUDLY MADE IN AUSTRALIA

Our products are designed and manufactured in Australia. Engineered to perfection, using only the highest quality components and highly skilled labour, each luminaire is assembled and thoroughly tested to ensure that it exceeds the highest standards.

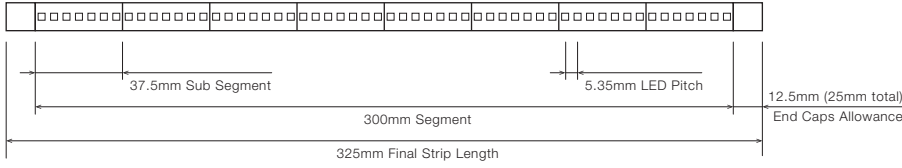
TECHNICAL SPECIFICATIONS

	9W VERSION	18W VERSION	
Part Number	STR-MAYA UG		
Description	Maya UG Mid Power LED Strip		
Segment Length (S)	300mm		
Sub-Segment Length (A)	37.5mm		
Number of Sub-Segments	8		
LED Pitch	5.35mm		
LEDs Per Segment	56		
LEDs Per Sub Segment	7		
Operating Voltage	24VDC		
Typical Power Consumption per Segment	2.71W	5.13W	
Typical Power Consumption per Metre	9.0W/Metre	17.3W/Metre	
Colour Rendering Index (CRI)	90+		
Dimmable	Through DRV-DALIPOINT-1X5A, DRV-RDM CV NEO or DRV-DIMMERPOINT-1X10A (sold separately)		
Effective Beam Angle	120°		
External Heatsink Required	No		
Ambient Operating Temperature	Ta -10°C to 40°C		
Reported Lumen Maintenance TM21-11 (@ Ts = 55°C, If = 60mA)	L128-x090003000W21/5 – Single BIN, 3 step MacAdam L70 (12K) > 72,000 hours L90 (12K) > 72,000 hours Maya UG max. operating values (@ Ts = 50°C, If = 30mA)		
IP Rating	IP40 (Standard)		
Max Continuous Connection Length	Please refer to installation limitations		
Luminous Flux per Metre (lm/M)	RD	746 lm/Metre	1,386 lm/Metre
	P17D	750 lm/Metre	1,440 lm/Metre
	P17B	73 lm/Metre	137 lm/Metre

- Specified values measured at 2700K
- Specific lumen output and IES files available on request

■ DIMENSIONS

For final strip lengths please refer to the "Product Length" table.



REINFORCED PROFILE	AVAILABLE IN	MOUNTING OPTIONS
	Diffused 	<ul style="list-style-type: none"> ▪ MC-STR-RD Stainless Steel Mounting Clips
P17 PROFILE	AVAILABLE IN	MOUNTING OPTIONS
	Diffused 	<ul style="list-style-type: none"> ▪ MC-XCLIP Flat Mount X-Clip ▪ MC-STR-RBCLIP Rebate Mounting Clip ▪ MC-STR-SMCLIP Pivot Surface Mounting Clip ▪ MBR-RB-TA-P17-BLK Rotating Bracket, TYPE A Rotating Clip ▪ MBR-RB-TB-P17-BLK Rotating Bracket, TYPE B Rotating Clip
PR17 RECESSED PROFILE	AVAILABLE IN	MOUNTING OPTIONS
	Diffused 	<ul style="list-style-type: none"> ▪ MC-XCLIP Flat Mount X-Clip ▪ MC-STR-SMCLIP Pivot Surface Mounting Clip ▪ MC-STR-PR1732 Spring Mounting Clip

Click on the download icon to view more information regarding mounting and rebate suggestions.

▪ PRODUCT LENGTH WITH RD/P17D

FULL SEGMENTS	SUB SEGMENTS	EXACT STRIP LENGTH	END CAP ALLOWANCE	FINAL LENGTH
S0	A1	37.5mm	add 25mm	62.5mm
S0	A2	75mm	add 25mm	100mm
S0	A3	112.5mm	add 25mm	137.5mm
S0	A4	150mm	add 25mm	175mm
S0	A5	187.5mm	add 25mm	212.5mm
S0	A6	225mm	add 25mm	250mm
S0	A7	262.5mm	add 25mm	287.5mm
S1	A0	300mm	add 25mm	325 mm
S1	A1	337.5mm	add 25mm	362.5mm
S1	A2	375mm	add 25mm	400mm
S1	A3	412.5mm	add 25mm	437.5mm
S1	A4	450mm	add 25mm	475mm
S1	A5	487.5mm	add 25mm	512.5mm
S1	A6	525mm	add 25mm	550mm
S1	A7	562.5mm	add 25mm	587.5mm
S2	A0	600mm	add 25mm	625mm
S2	A1	637.5mm	add 25mm	662.5mm
S2	A2	675mm	add 25mm	700mm
S2	A3	712.5mm	add 25mm	737.5mm
S2	A4	750mm	add 25mm	775mm
S2	A5	787.5mm	add 25mm	812.5mm
S2	A6	825mm	add 25mm	850mm
S2	A7	862.5mm	add 25mm	887.5mm
S3	A0	900mm	add 25mm	925mm
S3	A1	937.5mm	add 25mm	962.5mm
S3	A2	975mm	add 25mm	1,000mm
S3	A3	1,012.5mm	add 25mm	1,037.5mm
S3	A4	1,050mm	add 25mm	1,075mm
S3	A5	1,087.5mm	add 25mm	1,112.5mm
S3	A6	1,125mm	add 25mm	1,150mm
S3	A7	1,162.5mm	add 25mm	1,187.5mm
S4	A0	1,200mm	add 25mm	1,225mm
S4	A1	1,237.5mm	add 25mm	1,262.5mm
S4	A2	1,275mm	add 25mm	1,300mm
S4	A3	1,312.5mm	add 25mm	1,337.5mm
S4	A4	1,350mm	add 25mm	1,375mm
S4	A5	1,387.5mm	add 25mm	1,412.5mm
S4	A6	1,425mm	add 25mm	1,450mm
S4	A7	1,462.5mm	add 25mm	1,487.5mm
S5	A0	1,500mm	add 25mm	1,525mm

➡ Continued on next page

⚠ WARNING

Do not bend LED strip when removing from mounting clips.

Gently twist LED Strip to remove from mounting clips.

⚠ WARNING

PLEASE HANDLE LONG LED STRIPS WITH CARE.

LED Strips must not be bent.

When handling LED Strips, please ensure that they are kept straight.

▪ **PRODUCT LENGTH WITH RD/P17D**
(CONTINUED)

FULL SEGMENTS	SUB SEGMENTS	EXACT STRIP LENGTH	END CAP ALLOWANCE	FINAL LENGTH
S5	A1	1,537.5mm	add 25mm	1,562.5mm
S5	A2	1,575mm	add 25mm	1,600mm
S5	A3	1,612.5mm	add 25mm	1,637.5mm
S5	A4	1,650mm	add 25mm	1,675mm
S5	A5	1,687.5mm	add 25mm	1,712.5mm
S5	A6	1,725mm	add 25mm	1,750mm
S5	A7	1,762.5mm	add 25mm	1,787.5mm
S6	A0	1,800mm	add 25mm	1,825mm
S6	A1	1,837.5mm	add 25mm	1,862.5mm
S6	A2	1,875mm	add 25mm	1,900mm
S6	A3	1,912.5mm	add 25mm	1,937.5mm
S6	A4	1,950mm	add 25mm	1,975mm
S6	A5	1,987.5mm	add 25mm	2,012.5mm
S6	A6	2,025mm	add 25mm	2,050mm
S6	A7	2,062.5mm	add 25mm	2,087.5mm
S7	A0	2,100mm	add 25mm	2,125mm
S7	A1	2,137.5mm	add 25mm	2,162.5mm
S7	A2	2,175mm	add 25mm	2,200mm
S7	A3	2,212.5mm	add 25mm	2,237.5mm
S7	A4	2,250mm	add 25mm	2,275mm
S7	A5	2,287.5mm	add 25mm	2,312.5mm
S7	A6	2,325mm	add 25mm	2,350mm
S7	A7	2,362.5mm	add 25mm	2,387.5mm
S8	A0	2,400mm	add 25mm	2,425mm
S8	A1	2,437.5mm	add 25mm	2,462.5mm
S8	A2	2,475mm	add 25mm	2,500mm
S8	A3	2,512.5mm	add 25mm	2,537.5mm
S8	A4	2,550mm	add 25mm	2,575mm
S8	A5	2,587.5mm	add 25mm	2,612.5mm
S8	A6	2,625mm	add 25mm	2,650mm
S8	A7	2,662.5mm	add 25mm	2,687.5mm
S9	A0	2,700mm	add 25mm	2,725mm
S9	A1	2,737.5mm	add 25mm	2,762.5mm
S9	A2	2,775mm	add 25mm	2,800mm
S9	A3	2,812.5mm	add 25mm	2,837.5mm
S9	A4	2,850mm	add 25mm	2,875mm
S9	A5	2,887.5mm	add 25mm	2,912.5mm
S9	A6	2,925mm	add 25mm	2,950mm
S9	A7	2,962.5mm	add 25mm	2,987.5mm

☐ Confirm interstate courier compliance

▪ Custom length subject to availability

⚠ WARNING

Do not bend LED strip when removing from mounting clips.

Gently twist LED Strip to remove from mounting clips.

⚠ WARNING

PLEASE HANDLE LONG LED STRIPS WITH CARE.

LED Strips must not be bent.

When handling LED Strips, please ensure that they are kept straight.

▪ PRODUCT LENGTH
PR17

FULL SEGMENTS	SUB SEGMENTS	PR17 EXACT STRIP LENGTH	PR17 END CAP ALLOWANCE	FINAL LENGTH
RS0	A1	37.5mm	add 40mm	77.5mm
RS0	A2	75mm	add 40mm	115mm
RS0	A3	112.5mm	add 40mm	152.5mm
RS0	A4	150mm	add 40mm	190mm
RS0	A5	187.5mm	add 40mm	227.5mm
RS0	A6	225mm	add 40mm	265mm
RS0	A7	262.5mm	add 40mm	302.5mm
RS1	A0	300mm	add 40mm	340mm
RS1	A1	337.5mm	add 40mm	377.5mm
RS1	A2	375mm	add 40mm	415mm
RS1	A3	412.5mm	add 40mm	452.5mm
RS1	A4	450mm	add 40mm	490mm
RS1	A5	487.5mm	add 40mm	527.5mm
RS1	A6	525mm	add 40mm	565mm
RS1	A7	562.5mm	add 40mm	602.5mm
RS2	A0	600mm	add 40mm	640mm
RS2	A1	637.5mm	add 40mm	677.5mm
RS2	A2	675mm	add 40mm	715mm
RS2	A3	712.5mm	add 40mm	752.5mm
RS2	A4	750mm	add 40mm	790mm
RS2	A5	787.5mm	add 40mm	827.5mm
RS2	A6	825mm	add 40mm	865mm
RS2	A7	862.5mm	add 40mm	902.5mm
RS3	A0	900mm	add 40mm	940mm
RS3	A1	937.5mm	add 40mm	977.5mm
RS3	A2	975mm	add 40mm	1,015mm
RS3	A3	1,012.5mm	add 40mm	1,052.5mm
RS3	A4	1,050mm	add 40mm	1,090mm
RS3	A5	1,087.5mm	add 40mm	1,127.5mm
RS3	A6	1,125mm	add 40mm	1,165mm
RS3	A7	1,162.5mm	add 40mm	1,202.5mm
RS4	A0	1,200mm	add 40mm	1,240mm
RS4	A1	1,237.5mm	add 40mm	1,277.5mm
RS4	A2	1,275mm	add 40mm	1,315mm
RS4	A3	1,312.5mm	add 40mm	1,352.5mm
RS4	A4	1,350mm	add 40mm	1,390mm
RS4	A5	1,387.5mm	add 40mm	1,427.5mm
RS4	A6	1,425mm	add 40mm	1,465mm
RS4	A7	1,462.5mm	add 40mm	1,502.5mm

➤ Continued on next page

⚠ WARNING

Do not bend LED strip when removing from mounting clips.

Gently twist LED Strip to remove from mounting clips.

⚠ WARNING

PLEASE HANDLE LONG LED STRIPS WITH CARE.

LED Strips must not be bent.

When handling LED Strips, please ensure that they are kept straight.

▪ **PRODUCT LENGTH**
PR17
 (CONTINUED)

FULL SEGMENTS	SUB SEGMENTS	PR17 EXACT STRIP LENGTH	PR17 END CAP ALLOWANCE	FINAL LENGTH
RS5	A0	1,500mm	add 40mm	1,540mm
RS5	A1	1,537.5mm	add 40mm	1,577.5mm
RS5	A2	1,575mm	add 40mm	1,615mm
RS5	A3	1,612.5mm	add 40mm	1,652.5mm
RS5	A4	1,650mm	add 40mm	1,690mm
RS5	A5	1,687.5mm	add 40mm	1,727.5mm
RS5	A6	1,725mm	add 40mm	1,765mm
RS5	A7	1,762.5mm	add 40mm	1,802.5mm
RS6	A0	1,800mm	add 40mm	1,840mm
RS6	A1	1,837.5mm	add 40mm	1,877.5mm
RS6	A2	1,875mm	add 40mm	1,915mm
RS6	A3	1,912.5mm	add 40mm	1,952.5mm
RS6	A4	1,950mm	add 40mm	1,990mm
RS6	A5	1,987.5mm	add 40mm	2,027.5mm
RS6	A6	2,025mm	add 40mm	2,065mm
RS6	A7	2,062.5mm	add 40mm	2,102.5mm
RS7	A0	2,100mm	add 40mm	2,140mm
RS7	A1	2,137.5mm	add 40mm	2,177.5mm
RS7	A2	2,175mm	add 40mm	2,215mm
RS7	A3	2,212.5mm	add 40mm	2,252.5mm
RS7	A4	2,250mm	add 40mm	2,290mm
RS7	A5	2,287.5mm	add 40mm	2,327.5mm
RS7	A6	2,325mm	add 40mm	2,365mm
RS7	A7	2,362.5mm	add 40mm	2,402.5mm
RS8	A0	2,400mm	add 40mm	2,440mm
RS8	A1	2,437.5mm	add 40mm	2,477.5mm
RS8	A2	2,475mm	add 40mm	2,515mm
RS8	A3	2,512.5mm	add 40mm	2,552.5mm
RS8	A4	2,550mm	add 40mm	2,590mm
RS8	A5	2,587.5mm	add 40mm	2,627.5mm
RS8	A6	2,625mm	add 40mm	2,665mm
RS8	A7	2,662.5mm	add 40mm	2,702.5mm
RS9	A0	2,700mm	add 40mm	2,740mm
RS9	A1	2,737.5mm	add 40mm	2,777.5mm
RS9	A2	2,775mm	add 40mm	2,815mm
RS9	A3	2,812.5mm	add 40mm	2,852.5mm
RS9	A4	2,850mm	add 40mm	2,890mm
RS9	A5	2,887.5mm	add 40mm	2,927.5mm
RS9	A6	2,925mm	add 40mm	2,965mm

■ Confirm interstate courier compliance

▪ Custom length subject to availability

⚠ WARNING

Do not bend LED strip when removing from mounting clips.

Gently twist LED Strip to remove from mounting clips.

⚠ WARNING

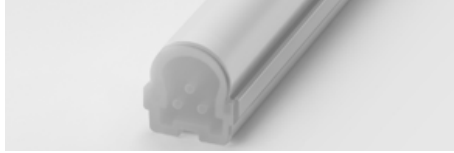
PLEASE HANDLE LONG LED STRIPS WITH CARE.

LED Strips must not be bent.

When handling LED Strips, please ensure that they are kept straight.

■ PROFILE /
DIFFUSER

RD · Reinforced Profile Diffused



P17D · P17 Profile Diffused



PR17D · PR17 Profile Recessed Diffused



P17B · P17 Profile Diffused Black



■ PROFILE
COLOUR

Profile colour applicable to P17 and PR17 only.

WHT · White (Standard)



BLK · Black



CST · Custom Colour ¹



¹ Custom colours available on request.

WIRING CONFIGURATION

CONNECTOR TYPE	DRAWING	MALE	FEMALE
WR2OS Wire 2 Core One Side			
WR2BS Wire 2 Core Both Sides			
IC2MO Indoor Connector 2pin Male Only			
IC2MF Indoor Connector 2pin Male + Female			
SMPLC Sample Type Connector 2.5mm			

Please consult Coolon for details on extension cable between LED fittings, drivers and power supplies.

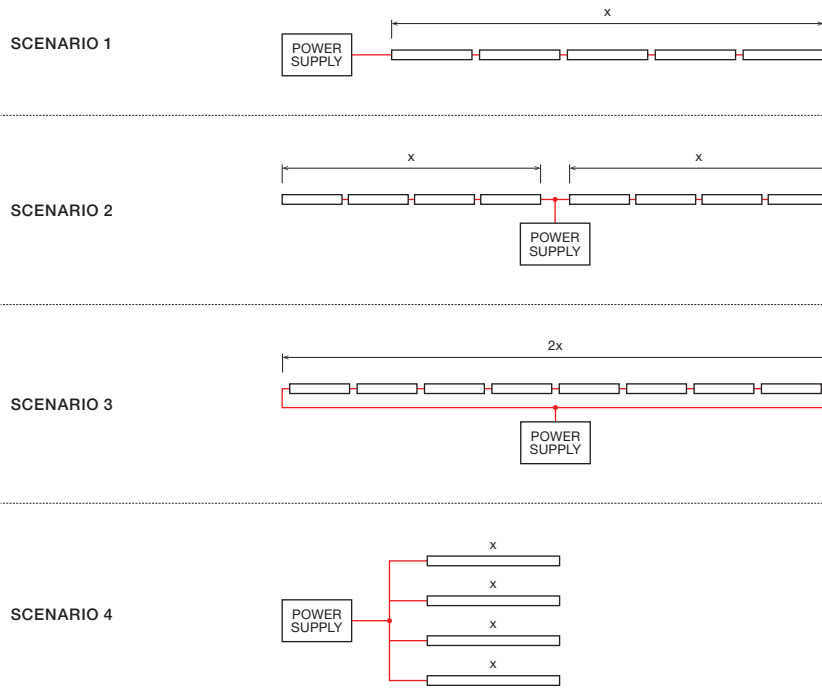
WIRING COLOUR CODE	
Red	+ VDC
Black	GND

IP RATING

IP40

Protected against solid objects greater than 1mm. No protection against liquids.

■ INSTALLATION LIMITS



9W VERSION

MAX. CONTINUOUS CONNECTION LENGTH (X)	CONNECTOR TYPE
13,000 mm	With standard 2 core (WR2OS / WR2BS)
6,000 mm	With outdoor 2 pin connectors (IC2MO / IC2MF)

▪ Please consult Coolon for details on extension cable between LED fittings, drivers and power supplies.

18W VERSION

MAX. CONTINUOUS CONNECTION LENGTH (X)	CONNECTOR TYPE
7,000 mm	With standard 2 core (WR2OS / WR2BS)
3,000 mm	With outdoor 2 pin connectors (IC2MO / IC2MF)

▪ Please consult Coolon for details on extension cable between LED fittings, drivers and power supplies.

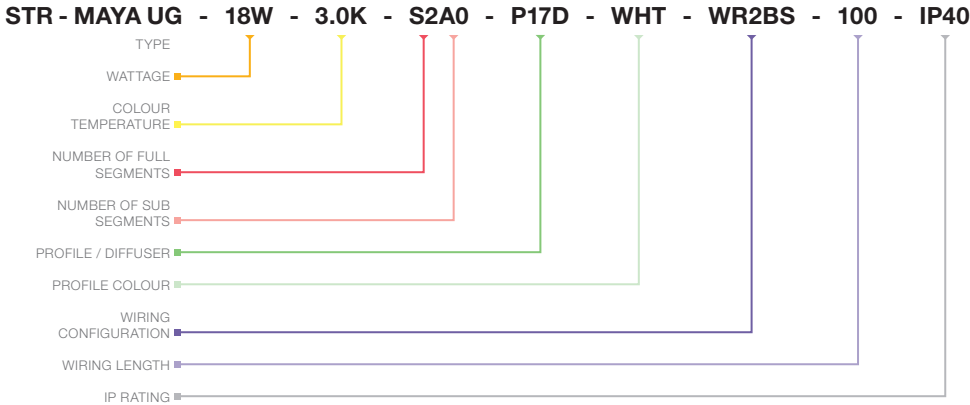
⚠ WARNING

Avoid connecting multiple power supplies into a single circuit, unless they are specifically designed to do so.

✗

✗

ORDERING EXAMPLE



WATTAGE PAGE 04

9W	9W per Metre
18W	17.3W per Metre

COLOUR TEMPERATURE ¹ PAGE 04

1.8KCRI	1800K CRI 90
2.2KCRI	2200K CRI 90
2.7KCRI	2700K CRI 90
3.0KCRI	3000K CRI 90
3.5KCRI	3500K CRI 90
4.0KCRI	4000K CRI 90
6.5KCRI	6500K CRI 90

PRODUCT LENGTH PAGE 06

FULL SEGMENTS		SUB SEGMENTS
S0	RS0	A0
S1	RS1	A1
S2	RS2	A2
S3	RS3	A3
S4	RS4	A4
S5	RS5	A5
S6	RS6	A6
S7	RS7	A7
S8	RS8	
S9	RS9	

PROFILE / DIFFUSER PAGE 08

RD	Reinforced Profile Diffused
P17D	P17 Profile Diffused
PR17D	PR17D Recessed Profile Diffused
P17B	P17 Profile Diffused Black

PROFILE COLOUR ² PAGE 08

WHT	White (Standard)
BLK	Black
CST	Custom Colour

WIRING CONFIGURATION PAGE 09

WR2OS	Wire 2 Core One Side
WR2BS	Wire 2 Core Both Sides
OC2MO	Outdoor Connector 2 pin Male Only
OC2MF	Outdoor Connector 2 pin Male + Female
SMPLC	Sample Type Connector 2.5mm

WIRING LENGTH PAGE 09

100	100mm
250	250mm
500	500mm
1000	1,000mm

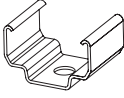
IP RATING PAGE 09

IP40	Indoor Use
------	------------

¹ Other CCT subject to availability.

² Profile colour applicable to P17 and PR17 only. Custom colours available on request.

■ ACCESSORIES

	PRODUCT CODE	DESCRIPTION
MOUNTING CLIP ¹		
	MC-STR-1513	Stainless Steel Mounting Clips for Standard & Low Profile
	MC-STR-RD	Stainless Steel Mounting Clips for Reinforced Profile
	MC-XCLIP	Flat Mount X-Clip
	MC-STR-RBCLIP	Rebate Mounting Clip
	MC-STR-SMCLIP	Pivot Surface Mounting Clip
	MBR-RB-TA-P17-BLK	Rotating Bracket, TYPE A Rotating Clip - Black
	MBR-RB-TB-P17-BLK	Rotating Bracket, TYPE B Rotating Clip - Black
	MC-STR-PR1732	Spring Mounting Clip for PR17 Recessed Profile

¹ Recommended spacing between MC-STR-RD and MC-STR-1513 Mounting Clips is maximum 300mm.
Recommended spacing for all other Mounting Brackets and Clips is maximum 1,000mm.

DRIVER



DRV-DALIPOINT-1X5A	DALI 5 Amps 1 Channel LED Driver
DRV-DIMMERPOINT-1X10A	Rotary Wall-Mount LED Driver
DRV-RDM-P4	DMX / RDM 4 Channel LED Driver
DRV-RDM CV NEO	Neo Outdoor DMX / RDM 4 Channel LED Driver

POWER SUPPLY



PWR-HLG-60H-24AU	Mean Well Power Supply HLG 60W 24V
PWR-HLG-150H-24AU	Mean Well Power Supply HLG 150W 24V
PWR-HLG-240H-24AU	Mean Well Power Supply HLG 240W 24V
PWR-HLG-320H-24AU	Mean Well Power Supply HLG 320W 24V

CABLE EXTENSIONS



CBL-STR-WR2-DC-JL-IP40-3M	3m Cable Extension for Strips 1x Red, 1x Black, 0.75mm ² wire
CBL-STR-WR2-DC-JL-IP40-5M	5m Cable Extension for Strips 1x Red, 1x Black, 0.75mm ² wire
CBL-STR-IC2FO-DC-L-IP65-0.1M	0.1m Connector Extension for Strips 1x Red, 1x Black, 0.75mm ² wires
CBL-STR-IC2FO-DC-L-IP65-0.25M	0.25m Connector Extension for Strips 1x Red, 1x Black, 0.75mm ² wires

■ PHOTOGRAPHY

	LOCATION	LIGHTING PARTNER	PHOTOGRAPHER
Cover Photo	420 George Street, Sydney	Jadecross	Rohan Venn