



SPECTRUM RGBW IP

LED STRIP STR-SPECTRUM RGBW IP

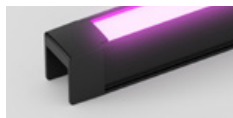


The reliable Spectrum RGBW IP provides smooth colour changing in a compact form factor, producing rich and intensely coloured light. Spectrum RGBW IP is perfect for outdoor architectural lighting applications when used either indirectly or directly as a line of light.

With advanced design features and a quad-chip LED that allows colour mixing to occur in each diode, Spectrum RGBW IP delivers a pure, bright and untainted glow of each colour that is completely uniform in appearance.

POWER**20W**

20.6W / metre

PROFILE**P20T****RGBW FULL COLOUR**

RGBW COLOURS

Spectrum RGBW IP offers full gamut RGBW colour ideal for decorative application and dazzling effects.

ELEGANT ENCAPSULATION

Spectrum RGBW IP utilises Coolon's encapsulation technology to deliver a truly extraordinary outdoor luminaire. IP66, IK08, shock and abrasion resistance, thermal protection, and dashing good looks, all in one.

L70

LONG USEFUL OPERATING LIFE

Coolon products use the world's most reputable LED manufacturers and the latest available standards to adequately report lumen maintenance. We strive to drive LEDs under their nominal current and use state-of-the-art heat dissipation methods, leading to durable electronics.



FLEXIBLE COLOUR MIXING VARIATIONS

Quad-chip LEDs provide spectacular colour mixing. Our high performance and superior quality LEDs have the ability to produce 16.7 million colours.

5
YEARS

5 YEARS WARRANTY

Coolon luminaires are covered by a solid comprehensive manufacturer's warranty that covers a range of possible defects and performance parameters throughout the duration of the warranty period.



PROUDLY MADE IN AUSTRALIA

Our products are designed and manufactured in Australia. Engineered to perfection, using only the highest quality components and highly skilled labour, each luminaire is assembled and thoroughly tested to ensure that it exceeds the highest standards.

TECHNICAL SPECIFICATIONS

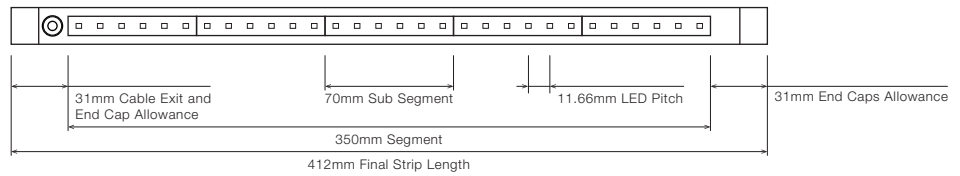
Product Code	STR-SPECTRUM RGBW IP			
Description	Spectrum RGBW IP LED Strip			
Segment Length (S)	350mm			
Sub-Segment Length (A)	70mm			
Number of Sub-Segments	5			
Segment Width	13.30mm			
LED Pitch	11.66mm			
LEDs Per Segment	30			
LEDs Per Sub Segment	6			
Operating Voltage	24VDC			
Typical Power Consumption per Segment	7W per segment			
Typical Power Consumption per Metre	20W per Metre			
Typical Current per 350mm Segment	■ Red - 75mA	■ Green - 75mA	■ Blue - 75mA	□ White - 75mA
Colour Rendering Index (CRI)	80 (Static White Only)			
Dimmable	Through DRV-RDM-P4, DRV-RDM CV NEO and CAS-CBU-PWM4			
Effective Beam Angle	120°			
External Heatsink Required	No			
Ambient Operating Temp	Ta -40°C to 50°C			
Thermal Management	No			
Average Lumen Maintenance @Ta 25°C	TBC			
IP Rating	IP66			
IK Rating	IK06 – IK08 (Standard)			
	<ul style="list-style-type: none"> ▪ IK Rating of IK06 passed without marks to the extrusion and polyurethane material ▪ IK Rating of IK07 and IK08 passed with minor marks to the extrusion and polyurethane material ▪ Cable exit / entry not part of the IK Rating test 			
Max Continuous Connection Length	Please refer to installation limitations			
Typical Wavelength or Colour Temperature CCT	■ Red - 624nm	■ Green - 527nm	■ Blue - 468nm	□ White - 3975K

POWER & LUMEN OUTPUT

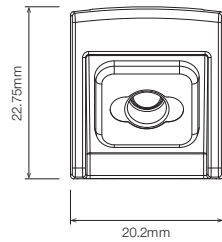
	POWER / METRE	LUMEN / METRE
□ White	5W	180 lm per Metre
■ Red	5W	60 lm per Metre
■ Green	5W	130 lm per Metre
■ Blue	5W	25 lm per Metre

DIMENSIONS

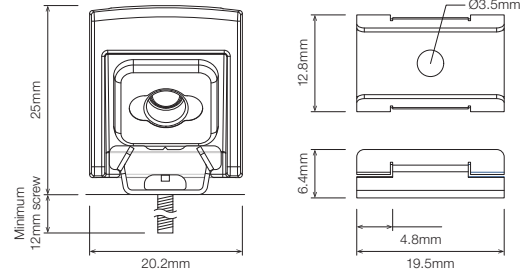
For final strip lengths please refer to the "Product Length" table.



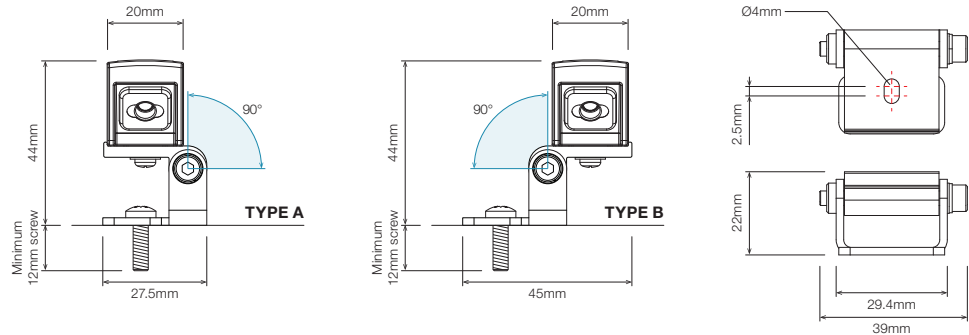
STANDARD PROFILE



WITH STAINLESS STEEL C-CLIP ¹



ROTATING MOUNTING BRACKET, TYPE A/B ROTATING CLIP ¹



¹ Recommended spacing between Mounting Brackets is maximum 500mm and Mounting Clips is maximum 300mm.



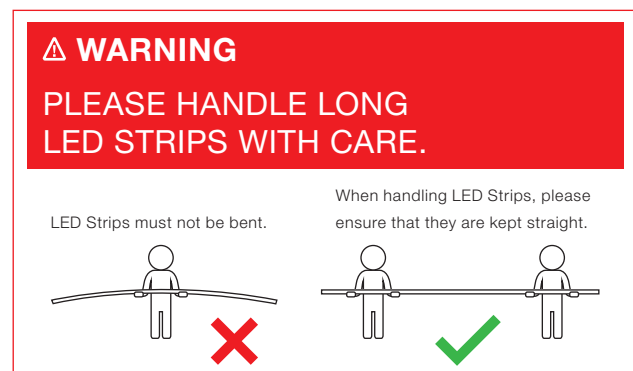
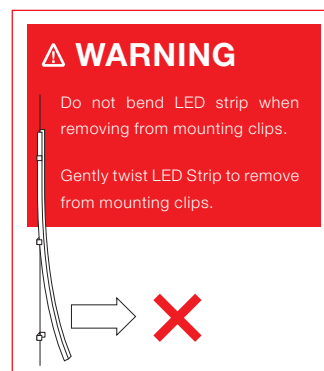
Click on the download icon to view more information regarding mounting and rebate suggestions.

PRODUCT LENGTH

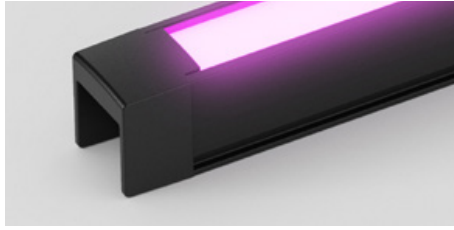
FULL SEGMENTS	SUB SEGMENTS	EXACT STRIP LENGTH	END CAP ALLOWANCE	FINAL LENGTH
S0	A1	70mm	add 62mm	132mm
S0	A2	140mm	add 62mm	202mm
S0	A3	210mm	add 62mm	272mm
S0	A4	280mm	add 62mm	342mm
S1	A0	350mm	add 62mm	412mm
S1	A1	420mm	add 62mm	482mm
S1	A2	490mm	add 62mm	552mm
S1	A3	560mm	add 62mm	622mm
S1	A4	630mm	add 62mm	692mm
S2	A0	700mm	add 62mm	762mm
S2	A1	770mm	add 62mm	832mm
S2	A2	840mm	add 62mm	902mm
S2	A3	910mm	add 62mm	972mm
S2	A4	980mm	add 62mm	1,042mm
S3	A0	1,050mm	add 62mm	1,112mm
S3	A1	1,120mm	add 62mm	1,182mm
S3	A2	1,190mm	add 62mm	1,252mm
S3	A3	1,260mm	add 62mm	1,322mm
S3	A4	1,330mm	add 62mm	1,392mm
S4	A0	1,400mm	add 62mm	1,462mm
S4	A1	1,470mm	add 62mm	1,532mm
S4	A2	1,540mm	add 62mm	1,602mm
S4	A3	1,610mm	add 62mm	1,672mm
S4	A4	1,680mm	add 62mm	1,742mm
S5	A0	1,750mm	add 62mm	1,812mm
S5	A1	1,820mm	add 62mm	1,882mm
S5	A2	1,890mm	add 62mm	1,952mm
S5	A3	1,960mm	add 62mm	2,022mm
S5	A4	2,030mm	add 62mm	2,092mm
S6	A0	2,100mm	add 62mm	2,162mm
S6	A1	2,170mm	add 62mm	2,232mm
S6	A2	2,240mm	add 62mm	2,302mm
S6	A3	2,310mm	add 62mm	2,372mm
S6	A4	2,380mm	add 62mm	2,442mm
S7	A0	2,450mm	add 62mm	2,512mm
S7	A1	2,520mm	add 62mm	2,582mm
S7	A2	2,590mm	add 62mm	2,652mm
S7	A3	2,660mm	add 62mm	2,722mm
S7	A4	2,730mm	add 62mm	2,792mm
S8	A0	2,800mm	add 62mm	2,862mm
S8	A1	2,870mm	add 62mm	2,932mm
S8	A2	2,940mm	add 62mm	3,002mm

Confirm interstate courier compliance

Custom length subject to availability

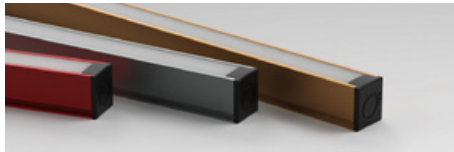


- PROFILE /
DIFFUSER

P20T · P20 Profile Diffused

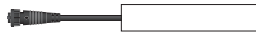




- PROFILE
COLOUR

Profile colour applicable to P20 only.

BLK · Black**WHT** · White (Standard)**CST** · Custom Colour ¹

¹ Custom colours available on request.

WIRING CONFIGURATION

CONNECTOR TYPE	DRAWING	MALE	FEMALE
OC6MO Outdoor Connector 6 pin Male Only			
OC6MF Outdoor Connector 6 pin Male + Female			

- Typical wiring length 250mm with cable's outer diameter 5.8mm
- Supplied with mating connector and 3,000mm cable
- Please consult Coolon for details on extension cables between LED fittings, drivers and PSUs.

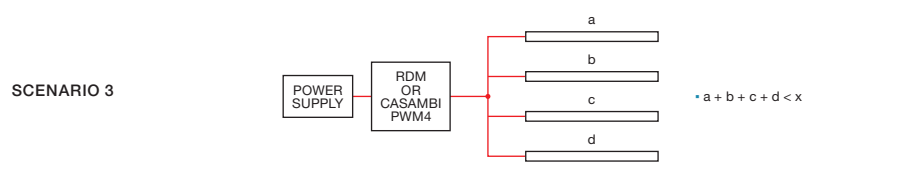
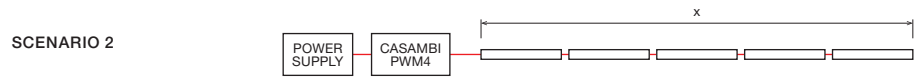
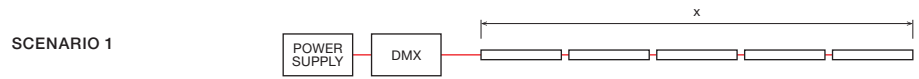
WIRING COLOUR CODE	
Orange / Yellow	+ VDC
Red	- RED
Green	- GREEN
Blue	- BLUE
White	- WHITE

IP RATING

IP66

Fully protected against dust.
Protected against wave-like
water jets from all directions.

■ INSTALLATION LIMITS



MAX. CONTINUOUS CONNECTION LENGTH (X) CONNECTOR TYPE

5,000mm With upgraded outdoor 6 pin connectors (OC6MO / OC6MF)

- Please consult Coolon for details on extension cables between LED fittings, drivers and PSUs.
- Maximum run length of RGBW strip may be restricted by DMX / RDM driver. Please refer to Coolon's Driver brochures.

⚠ WARNING

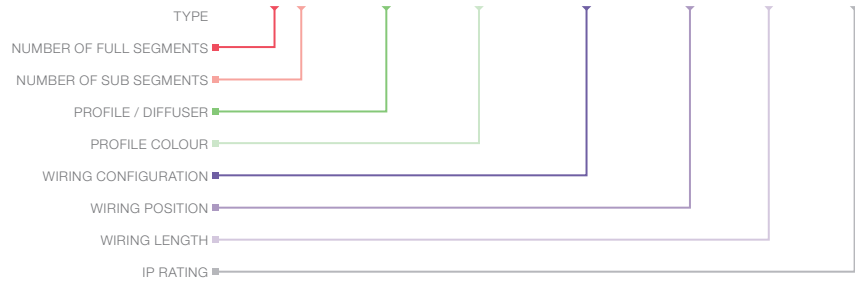
Avoid connecting multiple power supplies into a single circuit, unless they are specifically designed to do so.

✗

✗

ORDERING EXAMPLE

STR - SPECTRUM RGBW IP - S2A1 - P20T - BLK - OC6MO - WA - 250 - IP66



PRODUCT LENGTH PAGE 06

FULL SEGMENTS	SUB SEGMENTS
S0	A0
S1	A1
S2	A2
S3	A3
S4	A4
S5	
S6	
S7	
S8	

PROFILE / DIFFUSER PAGE 07

P20T	P20 Profile Diffused
------	----------------------

PROFILE COLOUR ¹ PAGE 07

BLK	Black
WHT	White (Standard)
CST	Custom Colour

WIRING CONFIGURATION PAGE 07

OC6MO	Outdoor Connector 6 pin Male Only
OC6MF	Outdoor Connector 6 pin Male + Female

WIRING POSITION

WA	Adjustable Wiring
----	-------------------

WIRING LENGTH





250	250mm
-----	-------

IP RATING PAGE 07

IP66	Outdoor Use
------	-------------

¹ Custom colours available on request.

■ ACCESSORIES

	PRODUCT CODE	DESCRIPTION
MOUNTING		
	MC-CCLIP20	Stainless Steel C-Clip for P20 Profile
	MBR-RB-TA-BLK	Rotating Bracket, TYPE A Rotating Clip - Black
	MBR-RB-TB-BLK	Rotating Bracket, TYPE B Rotating Clip - Black
¹ Recommended spacing between Mounting Brackets is maximum 500mm and Mounting Clips is maximum 300mm.		
DRIVER		
	DRV-RDM-P4	DMX / RDM 4 Channel LED Driver
	DRV-RDM CV NEO	Neo Outdoor DMX / RDM 4 Channel LED Driver
	CAS-CBU-PWM4	Casambi Bluetooth Controllable 4 Channel PWM Dimmer
POWER SUPPLY FOR OUTDOOR USE (IP67)		
	PWR-HLG-60H-24AU	Mean Well Power Supply HLG 60W 24V IP67
	PWR-HLG-150H-24AU	Mean Well Power Supply HLG 150W 24V IP67
	PWR-HLG-240H-24AU	Mean Well Power Supply HLG 240W 24V IP67
CABLE EXTENSIONS		
	CBL-LNR-OC6-DC-L-IP65-3M	3m Length, 5 Core Leader Cable with outdoor female 6 pin connector and loose wires
	CBL-LNR-OC6-DC-L-IP65-5M	5m Length, 5 Core Leader Cable with outdoor female 6 pin connector and loose wires
	CBL-LNR-OC6-DC-L-IP65-10M	10m Length, 5 Core Leader Cable with outdoor female 6 pin connector and loose wires

■ PHOTOGRAPHY

	LOCATION	LIGHTING PARTNER	PHOTOGRAPHER
Cover Photo	Sydney Gateway St Peters Link Bridge	Jadecross	Jackie Chan https://www.jackiechan.com.au/