



 COOLON

BULKHEAD / EM BULKHEAD

35W/42W Bulkhead Light

High performance, versatile, retrofit compatible LED bulkhead light

The Bulkhead is a high performance and versatile industrial light that has been carefully engineered with feedback from mining maintenance crews to ensure easy installation of a robust and virtually indestructible luminaire.

Designed for use in:

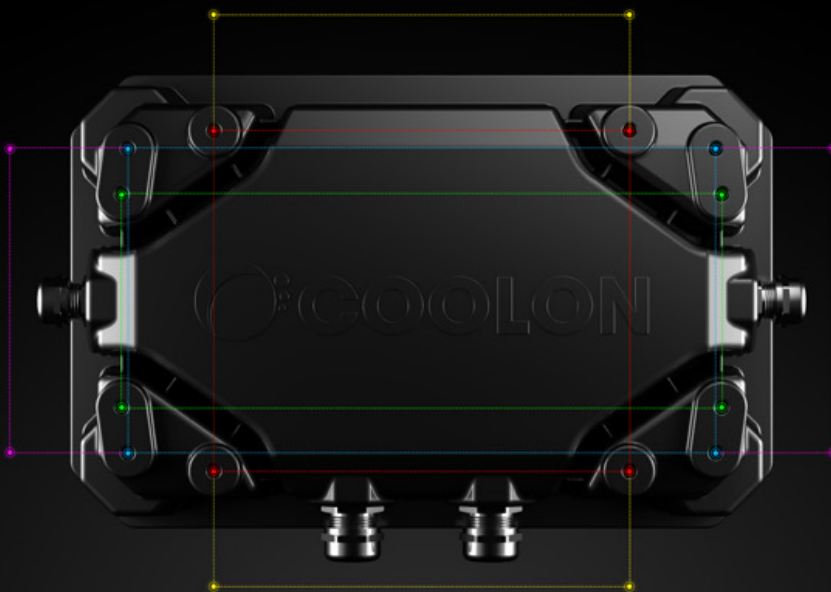
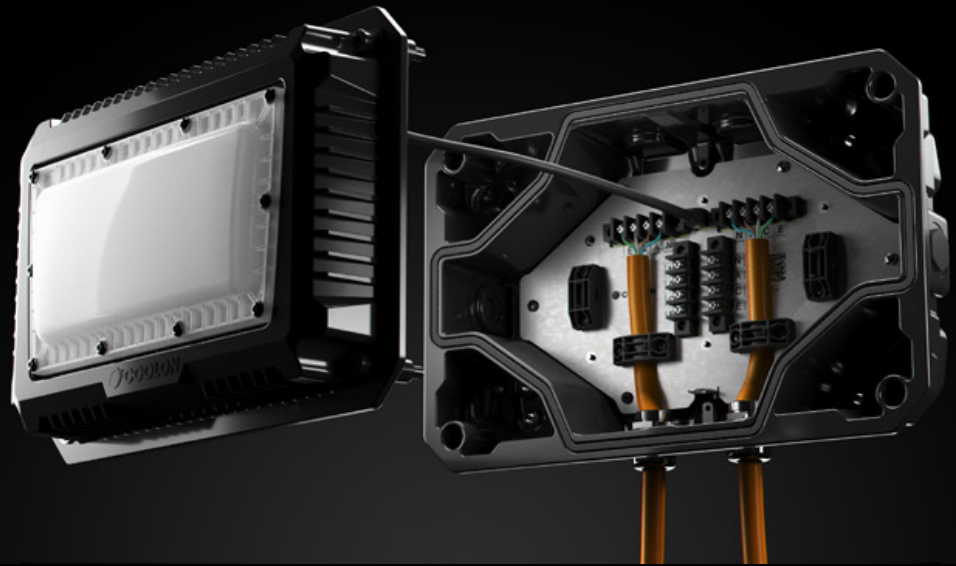
- Exit Routes
- Platforms
- Walkways
- Stairwells
- Substation
- Tunnels
- Conveyors



 DESIGNED &
MANUFACTURED
IN AUSTRALIA

Designed with the installer in mind

Multiple entry points, easily-accessible terminal block, and removable body. All these aspects make installation a breeze. "Straight off, straight on!"



Universal mount design

Designed with a universal mount to retrofit the hole patterns of most common bulkhead lights on the market, the Coolon Bulkhead is easy and quick to install.



COOL SURFACE TEMPERATURE

Coolon's Industrial LED fittings have a much lower surface temperature than traditional HID equivalents which prevents dirt from baking onto the luminaire. This allows for easier cleaning and will prolong the lifespan of the luminaire.



NO FLICKERING

LED luminaires run on constant low voltage DC power and do not produce any visible stroboscopic effects, thus reducing the strain on eyes and significantly improving safety in areas where moving machinery is present.



LOW SUSCEPTIBILITY TO VIBRATION

This luminaire is designed to handle continuous exposure to vibration. A typically critical issue affecting the life and operation of most common gas discharge lamp based light sources is mechanical shock and vibration.



5 YEARS FACTORY WARRANTY

Coolon luminaires are covered by a solid comprehensive manufacturer's warranty that covers a range of possible defects and performance parameters throughout the duration of the warranty period.



INSTANT ON/OFF

LEDs do not require warm up. Instant on to 100% output translates to no downtime, improved safety and the ability to utilize sensor switching to significantly save energy.



HIGH IP RATING - IP66

Coolon's Industrial LEDs are designed specifically to withstand the harsh conditions in mining environments. The robust design allows our LED products to be used in many different applications and are high pressure washable.



LONG USEFUL OPERATING LIFE

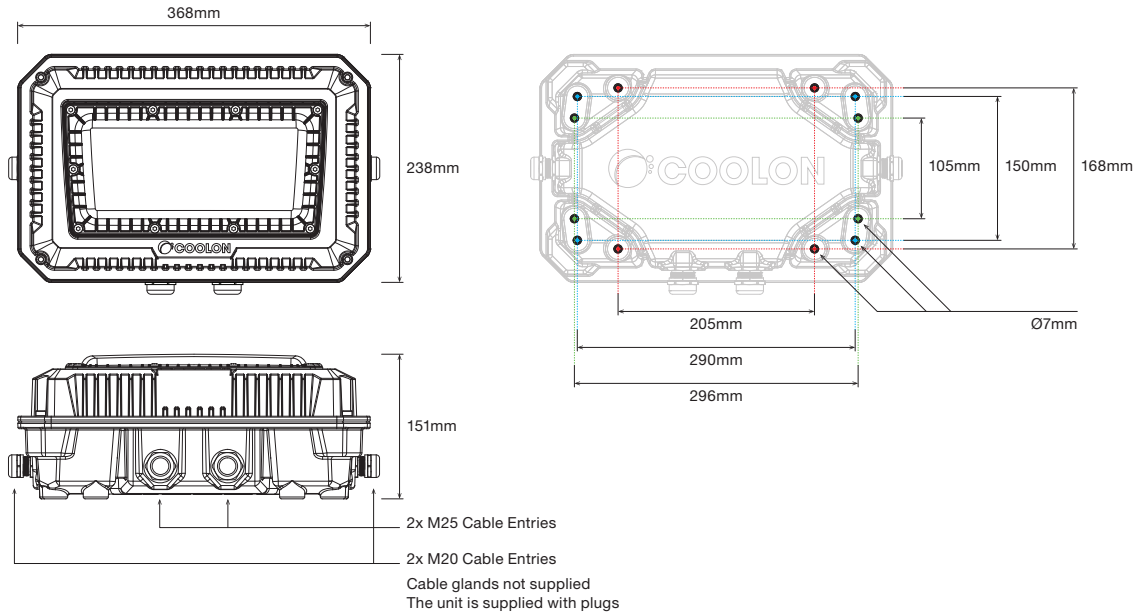
At Coolon we believe the lifetime of a luminaire is so much more than just the LED's. Coolon product lifetime takes the entire luminaire into consideration and each product is backed by a comprehensive warranty – that's the Coolon confidence.



PROUDLY MADE IN AUSTRALIA

Our products are designed and manufactured in Australia. Engineered to perfection, using only the highest quality components and highly skilled labour, each luminaire is assembled and thoroughly tested to ensure that it exceeds the highest standards.

DIMENSIONS



EMERGENCY BULKHEAD (EMBH)



The EMBH utilises a solid state integral emergency module. The emergency power is provided by safe LiFePO₄ cells with a host of intelligent management circuitry. The EMBH performs constant operational readiness tests, ensuring reliable emergency lighting will be available when needed. The on-board processor will notify the user should the unit ever need attention allowing operators to better utilise their time.

With a balance between performance, intelligence and reliability, the EMBH is the ultimate industrial integral EM luminaire.



TECHNICAL SPECIFICATIONS

Product	Bulkhead Industrial LED	
Model	BH	EMBH
Optical Characteristics		
Luminous Flux (Photometered)	4,243 – 4,364 lm	3,883 – 4,228 lm 1,470 lm (Emergency Mode)
CCT	CWT / NWT / WWT / AMB	
CRI	>70 excluding amber	
Electrical		
Power Consumption	35W	42W
Nominal Voltage	230VAC	230VAC
Voltage Range	180 – 440VAC 254 – 550VDC	90 – 277VAC 127 – 350VDC
Frequency Range	47 – 63Hz	47 – 63Hz
Power Factor (PF)	≥0.98 / 230VAC	≥0.95 / 230VAC
Leakage Current	<0.75mA / 440VAC	<0.75mA / 277VAC
Charge Time	-	16 hours
Battery Type	-	LiFePO ₄
Discharge Time	-	120 minutes initial / 90 minutes in service
Mechanical / Environmental		
IP Rating	IP66	
Impact Rating	IK09	
Salt Spray Tested	Yes	
Operating Temp. Range	-20 to +50°C	0 to +50°C
Thermal Management Type	Active/Continuous	
Expected Lifespan	50,000 Hours to 70% Brightness	
Material Composition (Body)	ADC12 Aluminium Alloy Polyester Powder Coated	
Material Composition (Cover)	Polycarbonate	
Entry Cable	2x M20 + 2x M25	

Weight/Packaging		
Luminaire Weight	5.6kg	6.8kg
Packaging Dimensions	400 x 280 x 180mm	
Packaged Weight	6.1kg	7.3kg

Compliance (Safety Standards)	
AS/NZS 60598.1	Luminaires - General Requirements and Tests
AS/NZS 60598.2.3	Luminaires - Particular requirements - For road and street lighting
AS/NZS 2293	Emergency lighting and exit signs for buildings

Compliance (EMC)	
AS/NZS CISPR15	Limits and methods of measurement of radio disturbance characteristics of electrical lighting and similar equipment

Warranty	
Warranty	5 years warranty as standard

Storage	
Temperature	0 to +45°C
Shelf Life	up to 12 months @ 20±5°C*

Note
Optical and electrical characteristics are measured using Cool White LEDs (CWT).

Reading taken while test unit operating in steady state. Ambient temperature during testing is typically 25°C. For EMBH induced voltage on the Control wire should be no greater than 10V. Individual unit behaviour may differ due to electronic component tolerance and ambient conditions. Product parameters and application suitability shall be checked by the user prior to commissioning.

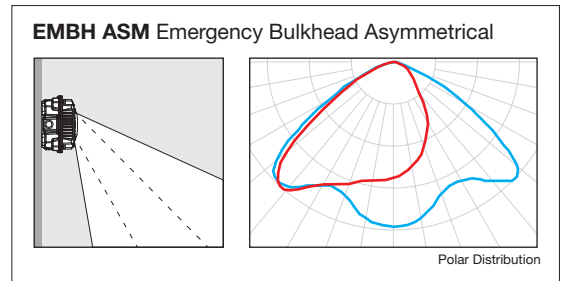
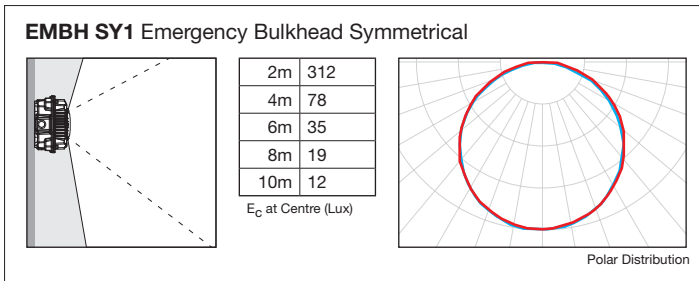
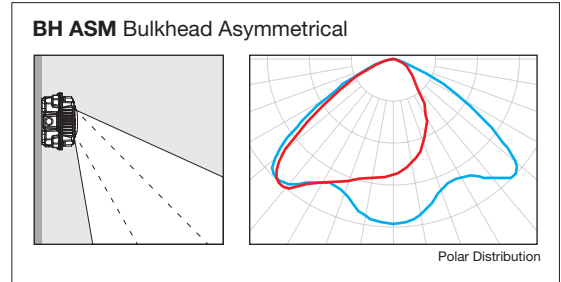
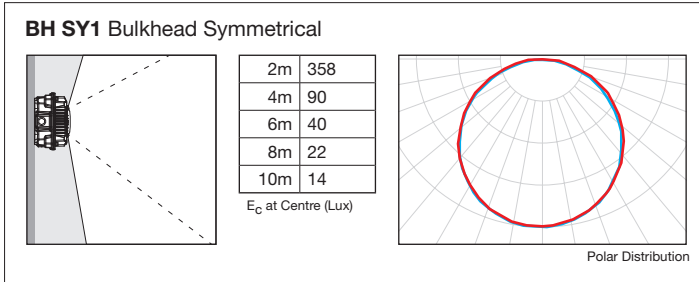
* Shelf life time with Battery Switch in OFF position is defined as time since product dispatch from Coolon, or since last charge cycle.

COLOUR TEMPERATURES



All colour temperatures are indicative. Some variation can occur.

POLAR DISTRIBUTION



OPTIONAL ACCESSORIES

Optional accessories available separately. Refer to industrial accessories page: coolon.com.au/industrial-led-lighting/accessories or follow the links below to download now.



Bulkhead Pole Mounting Bracket
coolon.com.au/dl/ind-acc-pmb-bh



Stainless Steel Wire Mesh Guard
coolon.com.au/dl/ind-acc-bh-wmg



Versalux EBH Adapter Plate
coolon.com.au/dl/ind-acc-ap-vebh



Stainless Steel Light Shield
coolon.com.au/dl/ind-acc-bh-shield

ORDERING EXAMPLE

BH - CWT - SY1 - MP

PRODUCT COLOUR TEMP OPTICS SUPPLY OPTION

PRODUCT	COLOUR TEMP	OPTICS	SUPPLY OPTION
BH Bulkhead	CWT Cool White	SY1 Symmetrical / Diffuser	MP Mains Powered
EMBH Emergency Bulkhead	NWT Neutral White	ASM Asymmetrical	
	WWT Warm White ¹		
	AMB Amber ¹		

¹ WWT and AMB are available in SY1 (Symmetrical) Optics only.