

**Technical Specifications** (per Luminaire)

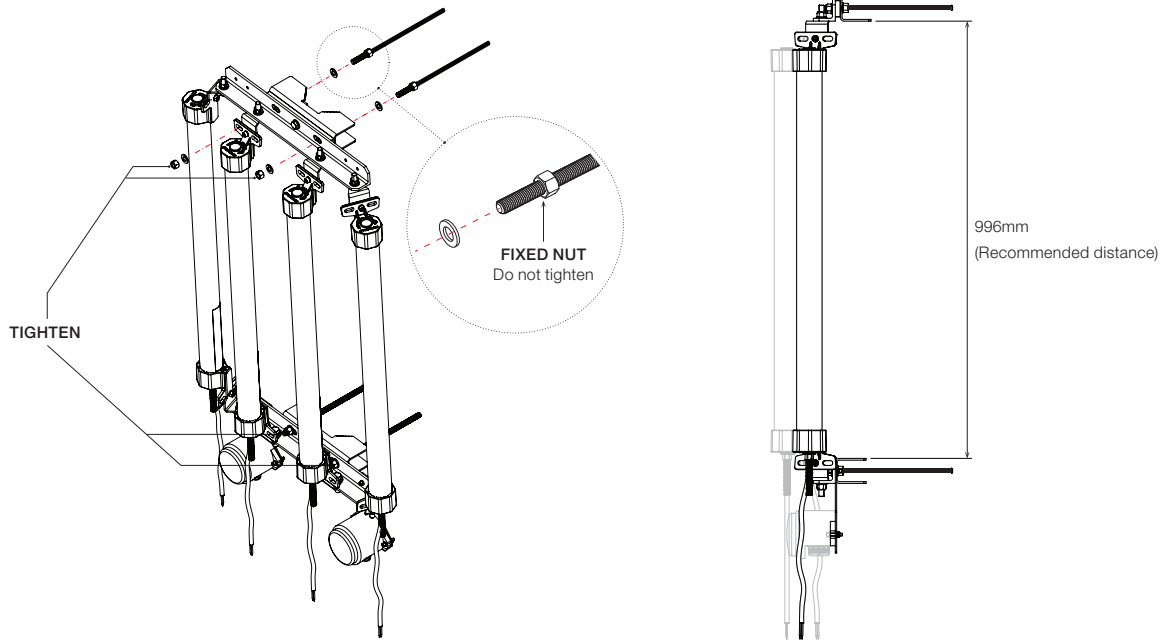
SUPPLY VOLTAGE	POWER	OPERATING TEMP.	IP RATING	IK RATING
48VDC ± 10%	40W	0°C ≤ T <sub>amb</sub> ≤ 50°C	IP66	IK09

**INSTALLATION INSTRUCTIONS**

**Step 1**

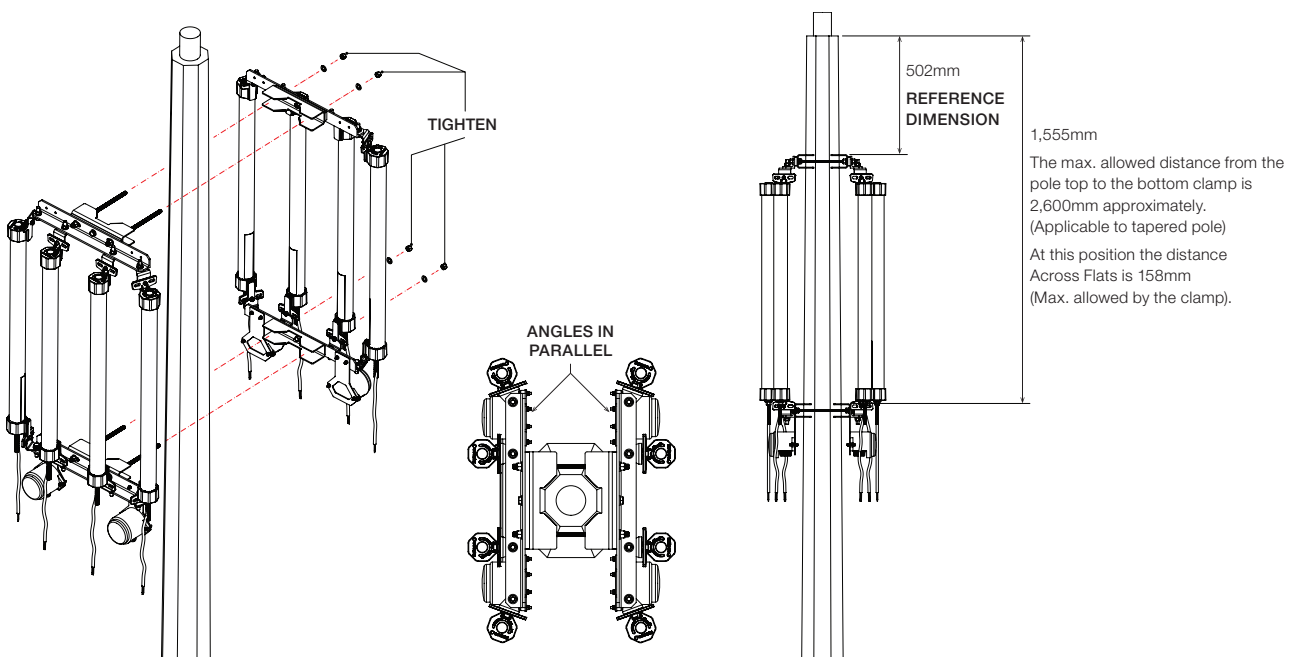
Tighten the 4x nuts to secure the threaded rods to the pole-clamp sub-assembly.

Ensure inner distance between rods are: • **TOP CLAMP:** 163mm • **BOTTOM CLAMP:** 163mm



**Step 2**

Measure the distance from the pole top. Install supplied Nylock nuts and tighten, securing in position the light-clamp sub-assemblies. Make sure the angles are parallel. Check the system will not rotate or slide.

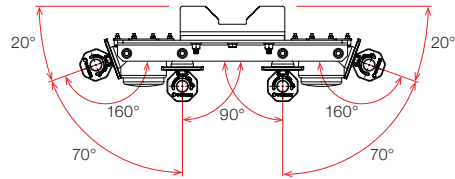


**INSTALLATION INSTRUCTIONS - LIGHT ADJUSTMENT**

**Step 1**

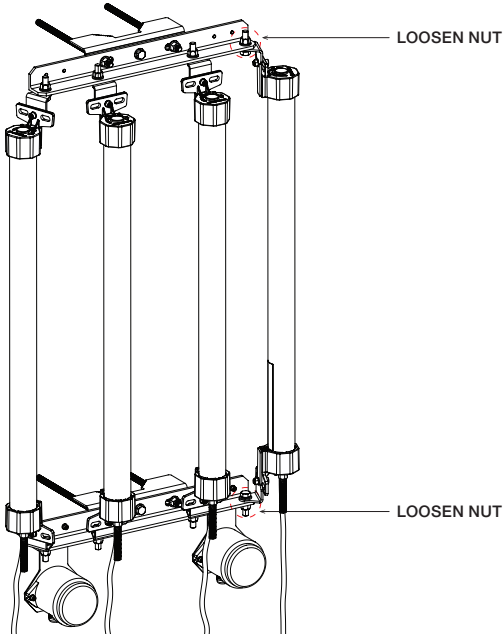
Angle of the fittings are factory adjusted to achieve 360° of coverage. **Do not move unless required.**

See below for adjustment instructions.



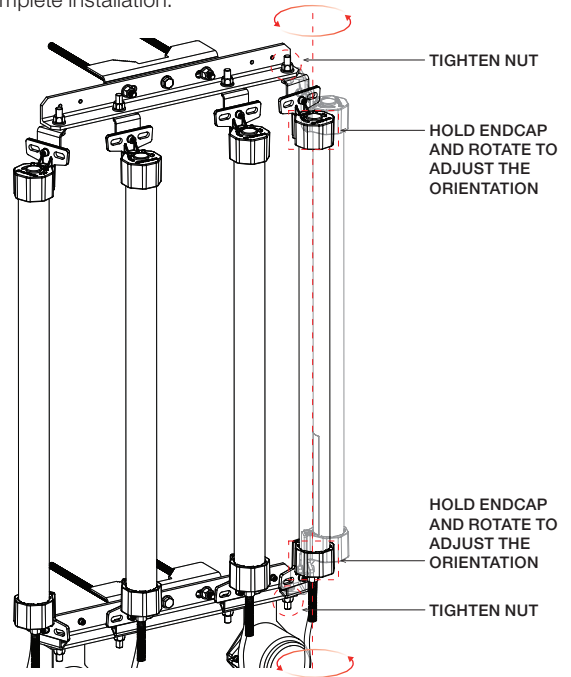
**Step 2**

Loosen indicated nuts enough to allow rotation of the clamps. Each light has 2 one on the top and one on the bottom.



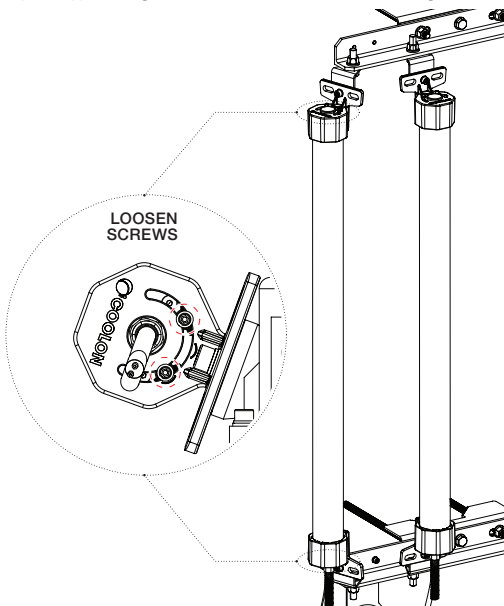
**Step 3**

Rotate light into desired position. Tighten nuts after adjustment to complete installation.



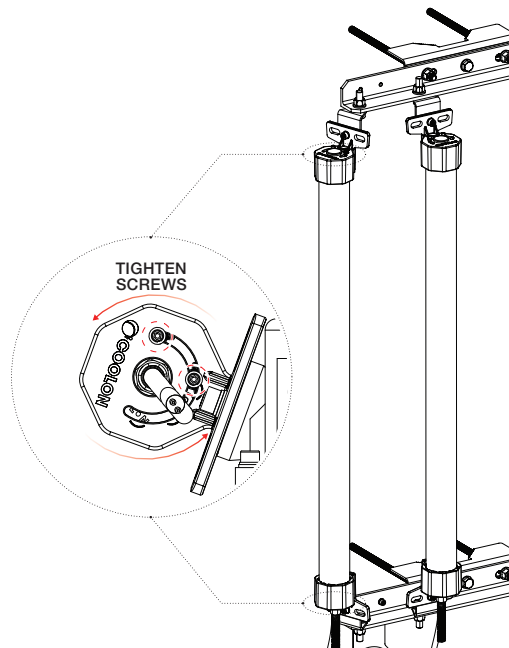
**Step 3**

In case you need to rotate the light tube further, you can adjust its rotation. First, make sure to adjust and secure the Endcaps in the desired orientation. Then, simply loosen the two screws on the top and bottom Endcaps (you don't need to remove them completely) enough to allow the rotation of the light tube.



**Step 4**

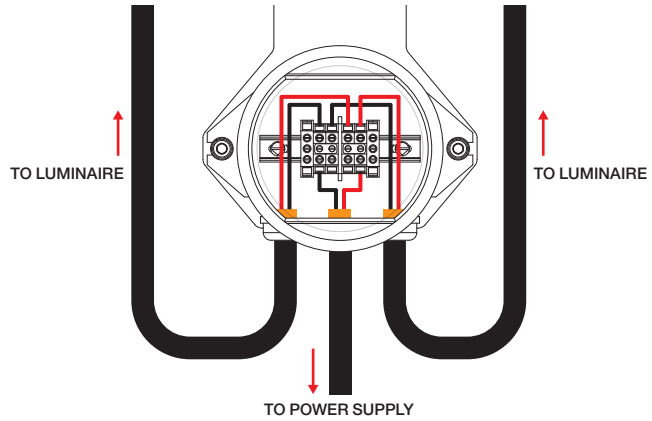
Rotate the light tube into desired position. Re-tighten screws on the endcaps until the light tube no longer rotates.



**INSTALLATION INSTRUCTIONS - WIRING**

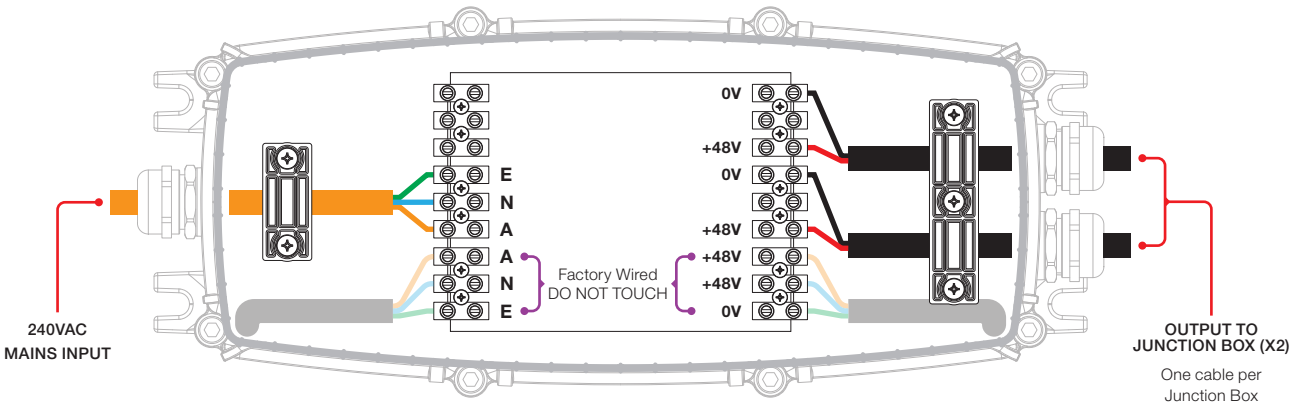
**Step 1**

Wire the lights and power supply into the junction box.  
 Repeat for each junction box.  
 Loom and cable tie as required.



**Step 2**

Wire the mains input and luminaire output cables into the power supply.



**IMPORTANT**

**Primary use:** commercial and industrial applications.

- Read through this manual before installation
- Handle the product with care
- Class I products must be grounded
- The product must be installed by a suitably qualified person
- Do not stare at operating lamp, may be harmful to the eyes
- Turn OFF the power before installation and maintenance
- Make sure the product is securely installed
- The housing might become hot after operation
- Keep optical face clean

Once the product has reached end of life, unit is to be disposed of in accordance to local e-waste laws or regulations. Do not dispose of these products as unsorted municipal waste: take them for recycling. For information on your nearest recycling point, check with your local waste authority.