



 COOLON

BLINKY

Visual Signalling System

BRILLIANT • CONNECTED

Never be caught unaware

Introducing the ultimate visual warning propagation system – Blinky. From the moment it's plugged in, every single light automatically connects across the site forming a robust wireless network and enabling the quickest and most efficient visual warning propagation system. Regardless of the size of the site or the complexity of its infrastructure, any emergency signal is instantaneously picked up, wirelessly transmitted, and visually propagated through every single light in the network at the same time. Working on a wireless mesh backbone, the Blinky system operates even in hard-to-reach areas and zones with no CB radio coverage, ensuring that not one worker is caught unaware.

Wirelessly connected. Effortless to deploy. Hundreds of lights are perfectly in sync to visually propagate emergency warnings everywhere on site.

Blinky is the future of industrial safety.




Designed for use in:

- Distributed Visual Signaling
- Visual Warning Indicator
- Warning Strobe
- Flashing Emergency Beacon

 DESIGNED & MANUFACTURED IN AUSTRALIA





Increased Situational Awareness

Ensure no one is caught unaware by propagating emergency alerts visually through the built-in RGBW indicator.



Enables digitisation

Lights automatically mesh together forming a site-wide wireless network enabling the effortless deployment of a wide range of IoT based sensors and services from third-party providers:

- Asset Tracking
 - Personnel Locating
 - Machine Condition Monitoring
- ... and many more!

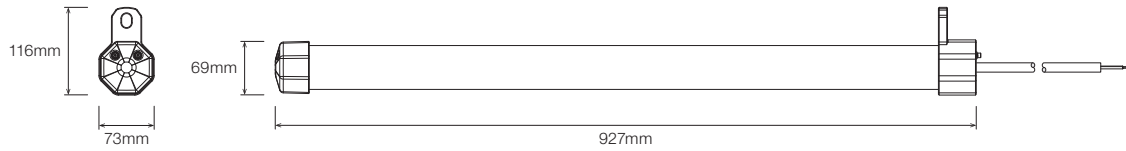


Lights as a digital backbone

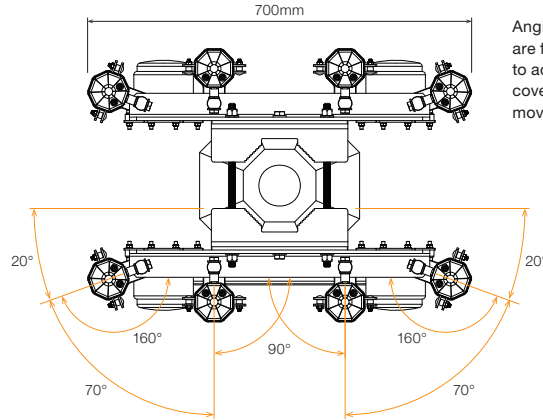
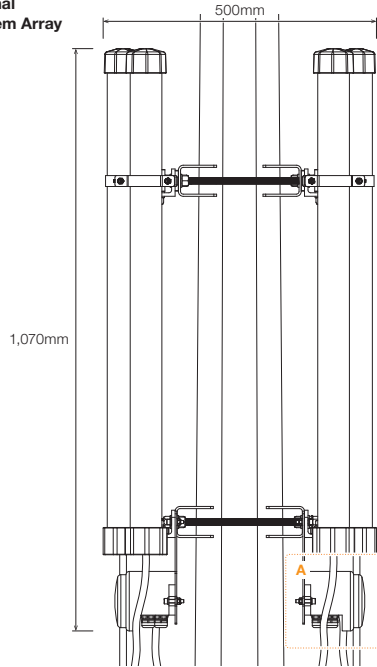
Lights are naturally positioned to provide the best radio coverage - elevated, constantly powered, routinely inspected and present everywhere on site.

Equipped with a smart networking node, DLK2S creates a robust mesh network across the site, regardless of the size or complexity of the infrastructure.

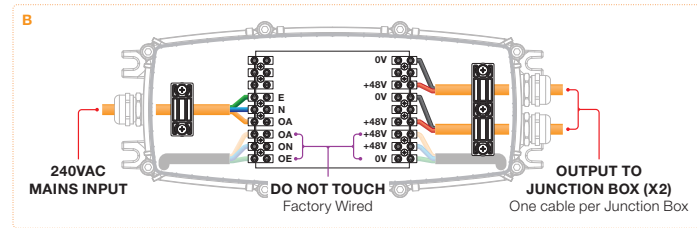
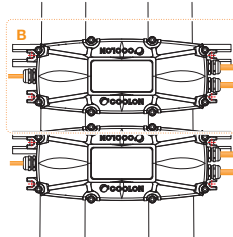
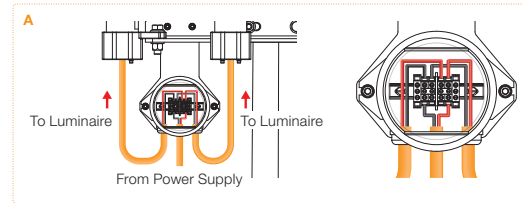
DIMENSIONS



Blinky Signal Light System Array



Angle of the fittings are factory adjusted to achieve 360° of coverage. Do not move unless required.



TECHNICAL SPECIFICATIONS

Product	Blinky Signal Light System
Model	BLINKY

Optical Characteristics

Luminous Flux	~4,000 lm
CCT	RED / YELLOW / AMB / WHT
CRI	>70

Electrical Characteristics (Luminaire) ¹

Power Consumption	40W
Supply Voltage	48V ± 10%
Cable Type	UL2517 14#2C+18#1C Braid PVC UV Resistant, Black
Cable Diameter	7.5mm
Cable Length	10m

Storage

Temperature	0 to +45°C
Shelf Life	Up to 12 months @ 20±5°C

Wireless Communication

Protocol	Wirepas
Operating Band	2.4 GHz, 40 Channels
Typical Range	15 – 30 metres line of sight ²
Data Encryption	AES-128
Network Standby Time	> 24 hours during power outage

Battery

Charge Time	≤16 hours
Battery Type	LiFePO4
Battery Lifetime	2,000 cycles to 70% SOC

Environmental

IP Rating	IP66
IK Rating	IK09
Operating Temp. Range	-0 to +50°C
Thermal Management Type	Active/Continuous
Expected Lifespan	50,000 Hours to 70% Brightness
Material Composition (Body)	Aluminum Alloy (Marine Grade Black Anodized)
Material Composition (Optics)	Protective Polycarbonate Clear Cover
Material Composition (Bracket)	Stainless Steel 304 Brackets

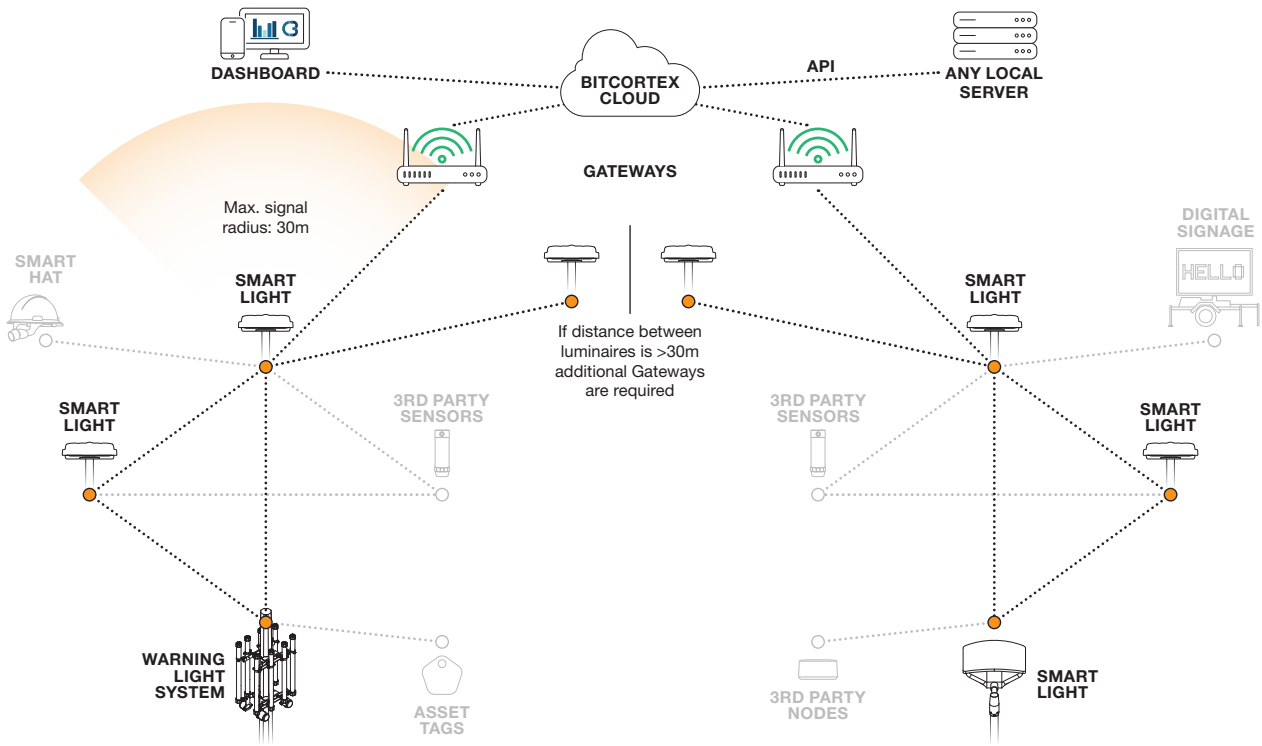
Warranty

Warranty	5 years warranty as standard.
-----------------	-------------------------------

¹ Reading taken while test unit operating in steady state. Ambient temperature during testing is typically 25°C. Individual unit behaviour may differ due to electronic component tolerance and ambient conditions. Product parameters and application suitability shall be checked by the user prior to commissioning.

² Wireless range might significantly vary depending on the type of antennas used, elevation above the ground, presence of metal obstacles and environmental conditions. Wireless coverage could be optimised with increased amount of devices forming mesh network.

MESH NETWORK



BitCortex
 A web based platform to manage and control smart wireless devices.
 Accessible anywhere through an internet connected browser.
 For more information on Coolon smart lighting range please visit: www.bitcortex.net

ORDERING EXAMPLE

BLINKY - 40 - RAYW - ELV

PRODUCT TYPE COLOUR TEMP SUPPLY OPTION

PRODUCT	TYPE	COLOUR TEMP	SUPPLY OPTION
BLINKY	40 40W	RAYW Red Amber Yellow White	ELV Extra Low Voltage