

DYNON FREIGHT TERMINAL LIGHTING UPGRADE



CASE STUDY

Project designed and supplied
by Coolon LED Lighting

Client: VicTrack

Partner: JNJ Electric



438%

AVERAGE LIGHT LEVELS INCREASE



670

TOTAL TONNES OF CO₂ REDUCED*



\$145K

TOTAL COST OF OWNERSHIP (TCO) SAVINGS*

* Over 5 years

Problem

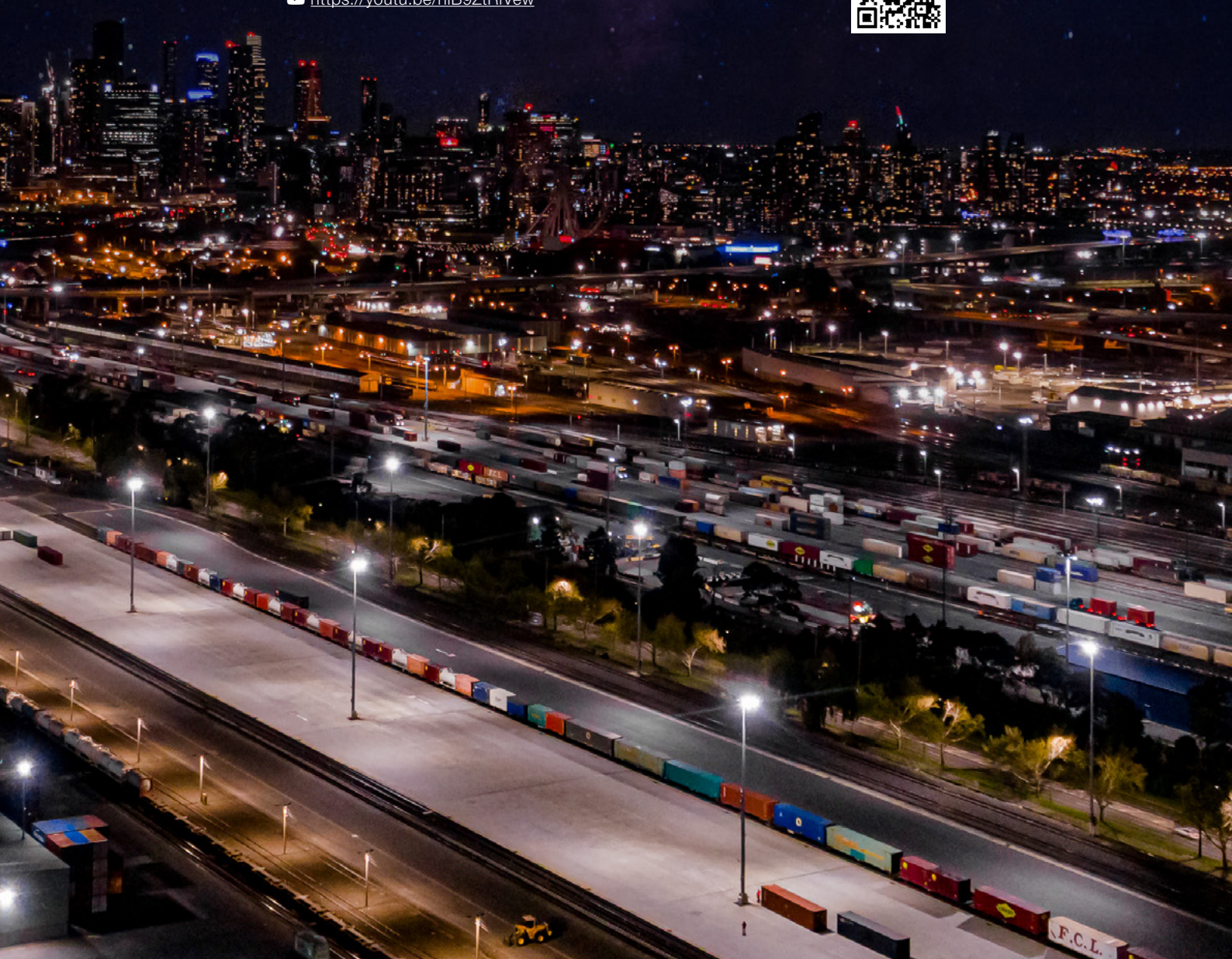
VicTrack Yard is an important freight facility and a crucial link in the Victorian supply chain. The existing HPS lamps installed many years ago were failing to provide adequate lighting levels, and were affecting overall visibility and productivity. Nightshift personnel had to rely on in-built mobile equipment lights and auxiliary lights, which delayed tasks and increased eye fatigue.

Solution

Considering the height of the poles and the operationally disruptive nature of installing and maintaining lights, VicTrack needed a reliable solution that would ensure uninterrupted operations for years, without need for maintenance. Coolon performed a lighting audit and created a comprehensive lighting design, recommending the use of the XBLADE™ 480W.

Watch the project come alive! Scan the QR code or visit:

<https://youtu.be/nlB9ZtRlVew>



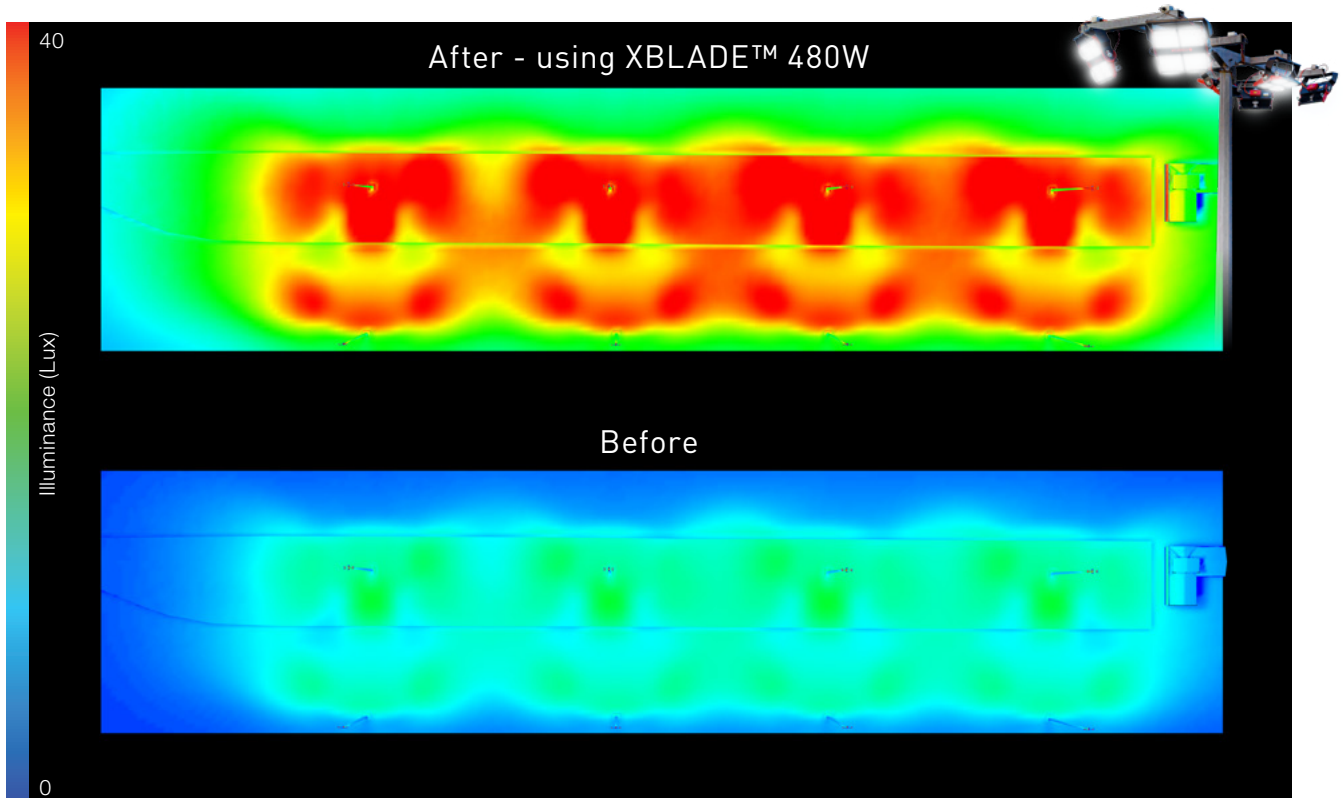
ENHANCED SAFETY, IMPROVED ILLUMINANCE



At Coolon, we understand the importance of tailored, high-quality lighting.

After taking lux meter readings and developing a detailed lighting design, Coolon proposed a bespoke lighting solution

that not only satisfied industry standards but dramatically improved work conditions for nightshift workers. The lux levels were increased over 4X on average, which resulted in enhanced visibility, allowed for greater hazard perception and improved alertness in personnel.



OPERATIONAL SAVINGS

48 units of HPS 1000W

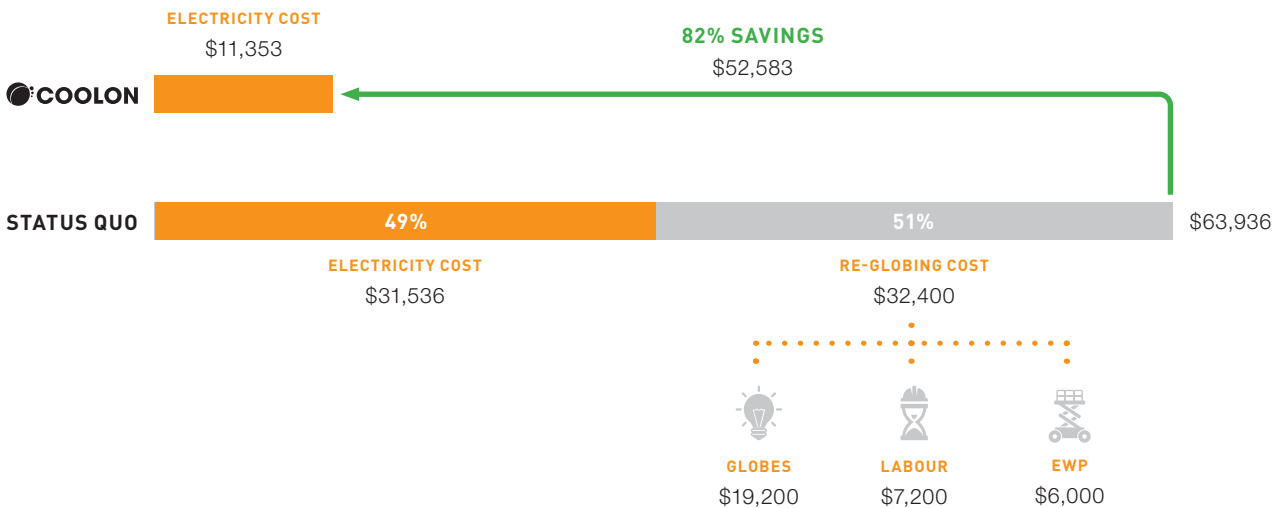
36 units of XBLADE™ 480W

82% ANNUAL OPERATING COST SAVINGS

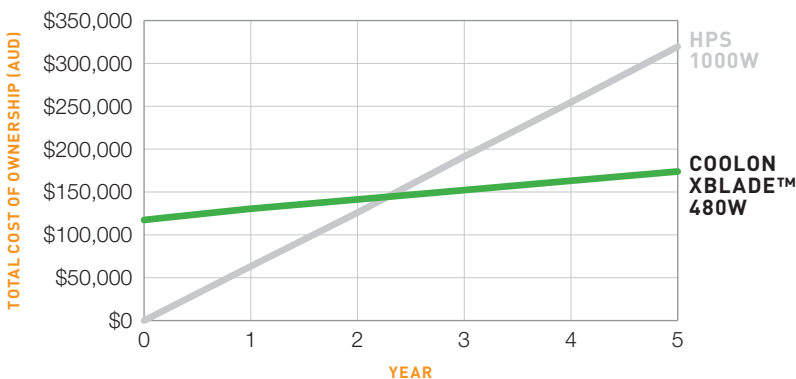
360 HOURS OF EFFORT RELEASED*

* Over 5 years

Annual Operating Costs



Total Cost of Ownership



SCENARIO

- Replacement project
- Application: high poles / area lighting
- Number of HPS luminaires: 48
- Number of XBLADE™ 480W luminaires: 36
- Running time: 12 hours per day, 365 days per year
- Cost of electricity: \$0.20 / kW h
- XBLADE™ lifespan: 50,000 hours
- HPS fittings require replacement 2x per year
- EWP cost per day: \$2,000
- Labour hourly rate: \$100 / hour

ABOUT THE

XBLADE™

480W

58,534 – 64,114 lm

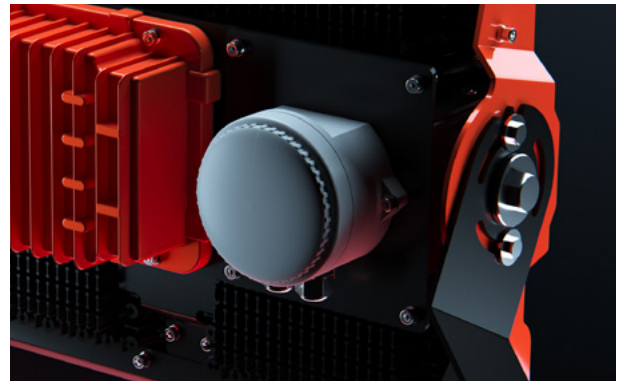
Our most powerful and robust flood light that provides wider surface coverage without losing intensity or quality of light. Resistant to corrosion, impacts and vibration.

The XBLADE™ Heavy-Duty LED Light has been designed specifically for safe and efficient installation and operation. A sturdy mainframe, in-built lifting handles and unique mounting bracket make this floodlight easy to handle and quick to install.



Easy to Handle

Purpose-built to assist with installation and handling. We understand the challenges of the real world and we have made XBLADE™ easy to transport, install and aim.

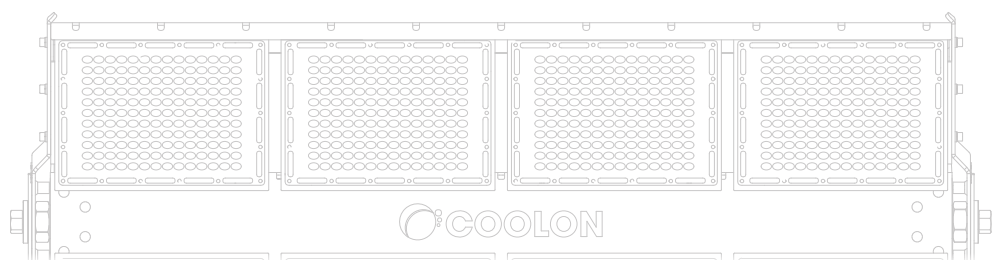


Remote Operation

XBLADE™ is available in an Extreme Remote Power Supply Configuration using revolutionary power management allowing for up to 100 metres of separation between the power supply and luminaire.

More Options

Also available in 960W,
117,067 – 128,228 lm





Reliable lighting for where it matters

In the beginning, there was a world full of ordinary luminaires. They worked, they often failed quickly, they were replaced. Again and again.

At Coolon, we realise that the total cost of ownership of lighting is far greater than the cost of the fitting itself. Especially in the high-stake areas. Devices that fail or need constant maintenance are a recurring waste of time, money, labour and resources.

So, we thought to ourselves... here is a problem that we can solve. And we solved it.

We engineered robust lights that work for years without repair or replacement. As a manufacturer, we love a challenge. We love seeing our lights operate to specifications year upon year, in harshest conditions without skipping a beat. More importantly, it lets you focus on your core operation and never worry about lights again. Producing robust lights that thrive in tough environments is what we do. We worry about all the ways that things can go wrong, so you don't have to.

MADE IN AUSTRALIA FOR AUSTRALIA

Loved all over the world

At Coolon, we are passionate about local manufacturing. We believe that local manufacturing is incredibly important for the creation of meaningful jobs, growing Australia's manufacturing capabilities, and fostering the economy.

We are proud to be an Australian manufacturer. All Coolon products are exclusively designed, manufactured and tested in our facilities in Victoria to ensure ultimate quality and years of reliable performance. Our extensive experience in the field, combined with our capable R&D department, allows us to create the industry's most reliable luminaires that deliver outstanding performance.

That's the Coolon difference.





Since its inception in 1996, JNJ Electric has been committed to providing the highest quality electrical service to key Government, Infrastructure, and public facilities, which are vital to a prosperous Victorian community. VicTrack have been one of these signature clients for more than a decade and we have forged a reputation with them to provide the most efficient and effective solution in every situation.

Working with Coolon for this VicTrack project was an easy decision. Coolon's excellent range of specialized products, along with their meticulous planning and communication throughout the project helped JNJ Electric to deliver a flawless result for this important facility.

One highlight of this project was working from a 55m boom lift, which is not a daily occurrence for most businesses. JNJ Electric team selected High Access for the job and their knowledge and assistance proved another great choice, for keeping the work flowing efficiently and safely.

The commissioning phase was a key project milestone and the winning combination of JNJ Electric's expertise and Coolon's detailed commissioning dossier ensured another outstanding solution was expertly delivered for a valued client.

